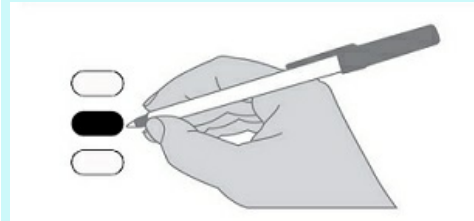


**Official General Election Sample/Provisional Ballot**  
**November 8, 2022**  
 Snohomish County, Washington

**Instructions**

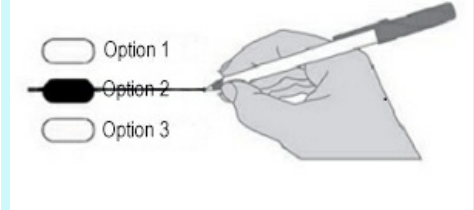
**How to vote**



Fill in the oval next to your choice.  
 Use blue or black ink.  
 Do not use felt pen.

Voting more than once per question or race will cancel that vote.

**How to change a vote**



Draw a line through the entire incorrect name or choice.

You may then make another selection.

**How to vote for a person not on the ballot**



Write the name of the person in the space provided at the end of the race and fill in the oval.

For a list of the people and organizations that donated to state and local candidates and ballot measure campaigns, visit [www.pdc.wa.gov](http://www.pdc.wa.gov).

**Start voting here.**

**Advisory Votes**

**Advisory Vote No. 39**  
**Engrossed Substitute Senate Bill 5974**

The legislature increased, without a vote of the people, the tax on aircraft fuel from 11 cents to 18 cents per gallon, costing \$14 million in its first ten years, for government spending.

This tax increase should be:

Repealed

Maintained

**Advisory Vote No. 40**  
**Engrossed Substitute House Bill 2076**

The legislature imposed, without a vote of the people, premiums on "transportation network companies" to provide workers compensation to their drivers, costing an indeterminate amount in its first ten years, for government spending.

This tax increase should be:

Repealed

Maintained

**Partisan Office Information**

**READ:** Each candidate for partisan office may state a political party that he or she prefers. A candidate's preference does not imply that the candidate is nominated or endorsed by the party, or that the party approves of or associates with that candidate.

**Federal Partisan Office**

**United States U.S. Senator**  
 Regular 6 year term - Vote for 1

**Patty Murray**  
*(Prefers Democratic Party)*

**Tiffany Smiley**  
*(Prefers Republican Party)*

Write-in

**Congressional District 1 U.S. Representative**  
 Regular 2 year term - Vote for 1

**Suzan DelBene**  
*(Prefers Democratic Party)*

**Vincent J Cavaleri**  
*(Prefers Republican Party)*

Write-in

**Congressional District 2 U.S. Representative**  
 Regular 2 year term - Vote for 1

**Rick Larsen**  
*(Prefers Democratic Party)*

**Dan Matthews**  
*(Prefers Republican Party)*

Write-in

**Congressional District 8 U.S. Representative**  
 Regular 2 year term - Vote for 1

**Kim Schrier**  
*(Prefers Democratic Party)*

**Matt Larkin**  
*(Prefers Republican Party)*

Write-in

**State  
Partisan Office**

**Washington State  
Secretary of State**

Unexpired 2 year term - Vote for 1

- Steve Hobbs**  
*(Prefers Democratic Party)*
- Julie Anderson**  
*(Prefers Nonpartisan Party)*
- Write-in

**Legislative  
Partisan Office**

**Legislative District 1  
State Representative Pos. 1**

Regular 2 year term - Vote for 1

- Davina Duerr**  
*(Prefers Democratic Party)*
- John Peeples**  
*(Prefers Republican Party)*
- Write-in

**Legislative District 1  
State Representative Pos. 2**

Regular 2 year term - Vote for 1

- Shelley Kloba**  
*(Prefers Democratic Party)*
- Jerry Buccola**  
*(Prefers Republican Party)*
- Write-in

**Legislative District 10  
State Representative Pos. 1**

Regular 2 year term - Vote for 1

- Clyde Shavers**  
*(Prefers Democratic Party)*
- Greg Gilday**  
*(Prefers Republican Party)*
- Write-in

**Legislative District 10  
State Representative Pos. 2**

Regular 2 year term - Vote for 1

- Dave Paul**  
*(Prefers Democratic Party)*
- Karen Lesetmoe**  
*(Prefers Republican Party)*
- Write-in

**Legislative District 12  
State Representative Pos. 1**

Regular 2 year term - Vote for 1

- Keith W. Goehner**  
*(Prefers Republican Party)*
- Write-in

**Legislative District 12  
State Representative Pos. 2**

Regular 2 year term - Vote for 1

- Mike Steele**  
*(Prefers Republican Party)*
- Robert K Amenn**  
*(Prefers Republican Party)*
- Write-in

**Legislative  
Partisan Office**

**Legislative District 21  
State Senator**

Regular 4 year term - Vote for 1

- Marko Liias**  
*(Prefers Democratic Party)*
- Janelle Cass**  
*(Prefers Republican Party)*
- Write-in

**Legislative District 21  
State Representative Pos. 1**

Regular 2 year term - Vote for 1

- Strom Peterson**  
*(Prefers Democratic Party)*
- Amy Schaper**  
*(Prefers Republican Party)*
- Write-in

**Legislative District 21  
State Representative Pos. 2**

Regular 2 year term - Vote for 1

- Lillian Ortiz-Self**  
*(Prefers Democratic Party)*
- Petra Bigea**  
*(Prefers Republican Party)*
- Write-in

**Legislative District 32  
State Senator**

Regular 4 year term - Vote for 1

- Jesse Salomon**  
*(Prefers Democratic Party)*
- Patricia Weber**  
*(Prefers Democratic Party)*
- Write-in

**Legislative District 32  
State Representative Pos. 1**

Regular 2 year term - Vote for 1

- Cindy Ryu**  
*(Prefers Democratic Party)*
- Lori Theis**  
*(Prefers Election Integrity Party)*
- Write-in

**Legislative District 32  
State Representative Pos. 2**

Regular 2 year term - Vote for 1

- Lauren Davis**  
*(Prefers Democratic Party)*
- Anthony Hubbard**  
*(Prefers Republican Party)*
- Write-in

**Legislative District 38  
State Senator**

Regular 4 year term - Vote for 1

- June Robinson**  
*(Prefers Democratic Party)*
- Bernard Moody**  
*(Prefers Republican Party)*
- Write-in

**Legislative  
Partisan Office**

**Legislative District 38  
State Representative Pos. 1**

Regular 2 year term - Vote for 1

- Julio Cortes**  
*(Prefers Democratic Party)*
- Gary Kemp**  
*(Prefers Republican Party)*
- Write-in

**Legislative District 38  
State Representative Pos. 2**

Regular 2 year term - Vote for 1

- Mary Fosse**  
*(Prefers Democratic Party)*
- Mark James**  
*(Prefers Republican Party)*
- Write-in

**Legislative District 39  
State Representative Pos. 1**

Regular 2 year term - Vote for 1

- Robert J. Sutherland**  
*(Prefers Republican Party)*
- Sam Low**  
*(Prefers Republican Party)*
- Write-in

**Legislative District 39  
State Representative Pos. 2**

Regular 2 year term - Vote for 1

- Carolyn Eslick**  
*(Prefers Republican Party)*
- Jessica Wadhams**  
*(Prefers Democratic Party)*
- Write-in

**Legislative District 44  
State Senator**

Short & Full 4 year term - Vote for 1

- John Lovick**  
*(Prefers Democratic Party)*
- Jeb Brewer**  
*(Prefers Republican Party)*
- Write-in

**Legislative District 44  
State Representative Pos. 1**

Short & Full 2 year term - Vote for 1

- Brandy Donaghy**  
*(Prefers Democratic Party)*
- Mark Harmsworth**  
*(Prefers Republican Party)*
- Write-in

**Legislative District 44  
State Representative Pos. 2**

Regular 2 year term - Vote for 1

- April Berg**  
*(Prefers Democratic Party)*
- Ryne Rohla**  
*(Prefers Republican Party)*
- Write-in

**Official General Election Sample/Provisional Ballot**  
**November 8, 2022**  
 Snohomish County, Washington

**County**  
**Partisan Office**

**Snohomish County**  
**Prosecuting Attorney**  
 Regular 4 year term - Vote for 1

- Jason Cummings**  
*(Prefers Democratic Party)*
- Brett Rogers**  
*(Prefers Republican Party)*
- Write-in

**Judicial**  
**Nonpartisan Office**

**Supreme Court**  
**Justice Position 1**  
 Regular 6 year term - Vote for 1

- Mary I. Yu**
- Write-in

**Supreme Court**  
**Justice Position 5**  
 Regular 6 year term - Vote for 1

- Barbara Madsen**
- Write-in

**Supreme Court**  
**Justice Position 6**  
 Regular 6 year term - Vote for 1

- G. Helen Whitener**
- Write-in

**Court of Appeals, Division 1, District 2**  
**Judge Position 1**  
 Regular 6 year term - Vote for 1

- Steve Dwyer**
- Write-in

**Cascade District Court**  
**Judge Position 1**  
 Regular 4 year term - Vote for 1

- Jennifer Rancourt**
- Write-in

**Everett District Court**  
**Judge Position 1**  
 Regular 4 year term - Vote for 1

- Anthony Howard**
- Write-in

**Judicial**  
**Nonpartisan Office**

**Everett District Court**  
**Judge Position 2**  
 Regular 4 year term - Vote for 1

- Tam T. Bui**
- Write-in

**Evergreen District Court**  
**Judge Position 1**  
 Regular 4 year term - Vote for 1

- Rick Leo**
- Write-in

**Evergreen District Court**  
**Judge Position 2**  
 Regular 4 year term - Vote for 1

- Patricia Lyon**
- Write-in

**South District Court**  
**Judge Position 1**  
 Regular 4 year term - Vote for 1

- Beth Fraser**
- Write-in

**South District Court**  
**Judge Position 2**  
 Regular 4 year term - Vote for 1

- Jeffrey D. Goodwin**
- Write-in

**South District Court**  
**Judge Position 3**  
 Regular 4 year term - Vote for 1

- Douglas J. Fair**
- Write-in

**Public Utility**  
**Nonpartisan Office**

**Public Utility District No. 1**  
**Commissioner District 3**  
 Regular 6 year term - Vote for 1

- Tanya Olson**
- Ken Maertens**
- Write-in

**City/Town**

**City of Lake Stevens**  
**Proposition No. 1**

Sales and Use Tax for Street, Sidewalk, Walkways, and Trail Construction and Street Preservation Improvements

If approved, this proposition would authorize a sales and use tax of 0.2% within the City pursuant to RCW 82.14.0455, for a term of 10 years, to pay for costs, and repay indebtedness issued from time to time to construct, repair, and maintain streets, sidewalks, walkways, and trail improvements in the City to improve transportation and pedestrian access and safety.

Should this proposition be:

- Approved**
- Rejected**

**City of Stanwood**  
**Proposition No. 1**

Sales and Use Tax for Transportation Improvements

The Stanwood City Council adopted Resolution 2022-10 concerning a tax to fund transportation improvements. This proposition would renew a sales and use tax of two-tenths of one percent (0.2%) to be collected from all taxable retail sales in accordance with RCW 82.14.0455 for 10 years. Funds would be used to pay costs associated with transportation improvement projects identified in the City of Stanwood's Six-year Capital Improvements Plan.

Should this proposition be approved?

- Yes**
- No**

## School

### Monroe School District No. 103 Proposition No. 1

Replacement of Expiring School Program  
and Operations Levy

The Board of Directors of Monroe School District No. 103 approved Resolution No. 8-2022 concerning a proposition for a replacement levy for education. This proposition would authorize the District to meet the educational needs of its students by levying the following excess taxes, to replace an expiring levy, on all taxable property within the District, to support educational programs and operations expenses not funded by the State, as provided in Resolution No. 8-2022:

Collection Years	Estimated Levy Rate/\$1,000 Assessed Value	Levy Amount
2023	\$1.71	\$15,890,376
2024	\$1.72	\$16,767,086
2025	\$1.73	\$17,672,509
2026	\$1.73	\$18,607,442

Should this proposition be approved?

Yes

No

## Fire

### Fire District 23 Proposition No. 1

Merger of Fire District 23 into Fire District  
17


The Board of Fire Commissioners of Fire Protection District No. 23, Snohomish County, Washington, adopted Resolution No. 2022-2 concerning a merger into Snohomish County Fire Protection District No. 17.

The proposition would authorize the merger of Snohomish County Fire Protection District No. 23 into Snohomish County Fire Protection District No. 17, effective on January 1, 2023.

Should this Proposition be enacted into  
law?

Yes

No

 **End of ballot.  
Thank you for voting!**