

Snohomish  
Sustainable Lands Strategy  
**Reach-Scale Resource  
Management & TDI**

# GOALS

- Snohomish Sustainable Lands Strategy
  - Net gain for farms & fish (broadly defined: tribes, ag productivity, flood control, water quality, habitat)
- Reach-Scale Packages
  - Combination of net gain fish & farm projects
  - Tech, design, implementation assistance thru TDI
  - Solid design, broad support, net gain = permits, \$

# PRINCIPLES

- Inform—Develop farmland and fish habitat information into an integrated geographic information system (GIS)
- Connect—Coordinate/bring together people and groups working for the benefit of agriculture and fish recovery
- Package—Create packages of activities that represent overall benefit for farms and overall benefit for fish
- Monitor & Evaluate —Measure the effectiveness of steps taken, adapt as needed to achieve desired progress

# STEPS

- Integrated fish & farm information system
- SLS engagement of farm & fish interests
- Assist reach project design, modeling, net gain packaging, permits, \$
- Construct / implement
- Monitor, evaluate, adapt

# OUTCOMES

- Reach-scale packages for four focus areas:
  - Based on sound science, best available information
  - Project development assistance (voluntary) thru TDI
  - Net gain for both fish and farm needs
  - Projects ready to go, garnering regional support

# Technical, Design, Implementation (TDI) Team

## **TDI MISSION**

Assist project proponents and stakeholders -- at a river reach, district, or countywide scale -- with the information, design, and implementation support to create projects and actions that, as part of a package, provide net gain for fish-farms-flood control, thereby building technically sound, broadly supported, and efficiently implemented projects.

# Who is the TDI Team?

- Technical experts:
  - From agencies, tribes, districts, stakeholder groups (ad hoc: convened to address reach / area issues & needs)
  - With specialized knowledge & skills (hydro/geo, bio, engineering, fish-farm-flood studies & plans, modeling)
  - Facilitate building of net gain packages
- Hosted by Snohomish County Floodplain Services
- Voluntary/non-regulatory... although participation by reg & resource agencies helps permitting, funding

# **Sustainable Lands Strategy**

**“Net Gain” for farms, fish, flood control  
above “no net loss,” net of impacts**

- **Defining Net Gain for Agriculture & Flood Control:**
  - Improve agricultural economic productivity
  - Farmland protection
  - Streamlined permitting & funding
  - Infrastructure support
  
- **Defining Net Gain for Fish/Environment/Tribes:**
  - Continued progress toward Salmon recovery targets
  - Improvements in water quality
  - Broad based community support for actions
  - Recognize changing watershed dynamics (climate, searise



# TDI Based on SLS Principles

- Integrate farm-fish info: assessments, GIS
- Connect ag, tribes, agencies, stakeholders
- Build broadly supported net gain packages
- Measure, evaluate, adapt

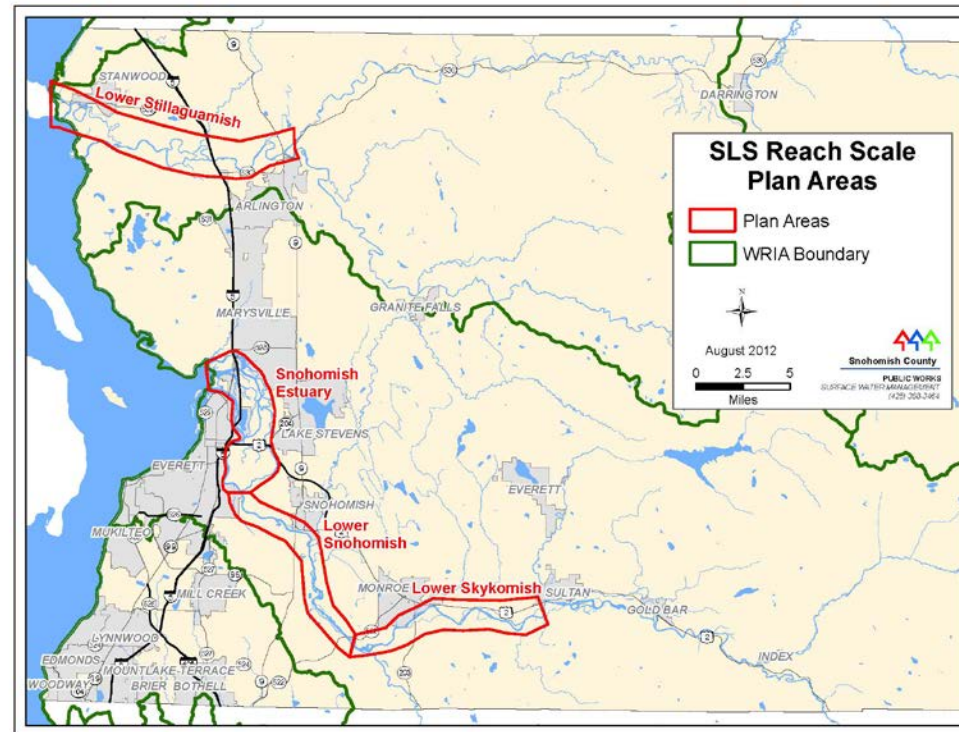
# TDI Team makes SLS integrated farm/fish info system accessible

SLS Integrated Info/GIS System combines & presents:

- Salmon recovery & watershed plans, studies, priorities
- Ag & diking district assessments, plans, priorities
- Water quality overlays (303(d) list)
- Land use (ground truthed) and zoning overlays
- Reach assessments: hydro/geo (erosion, deposition), infrastructure, drainage, flood hazard
- Hydrodynamic modeling of project scenarios

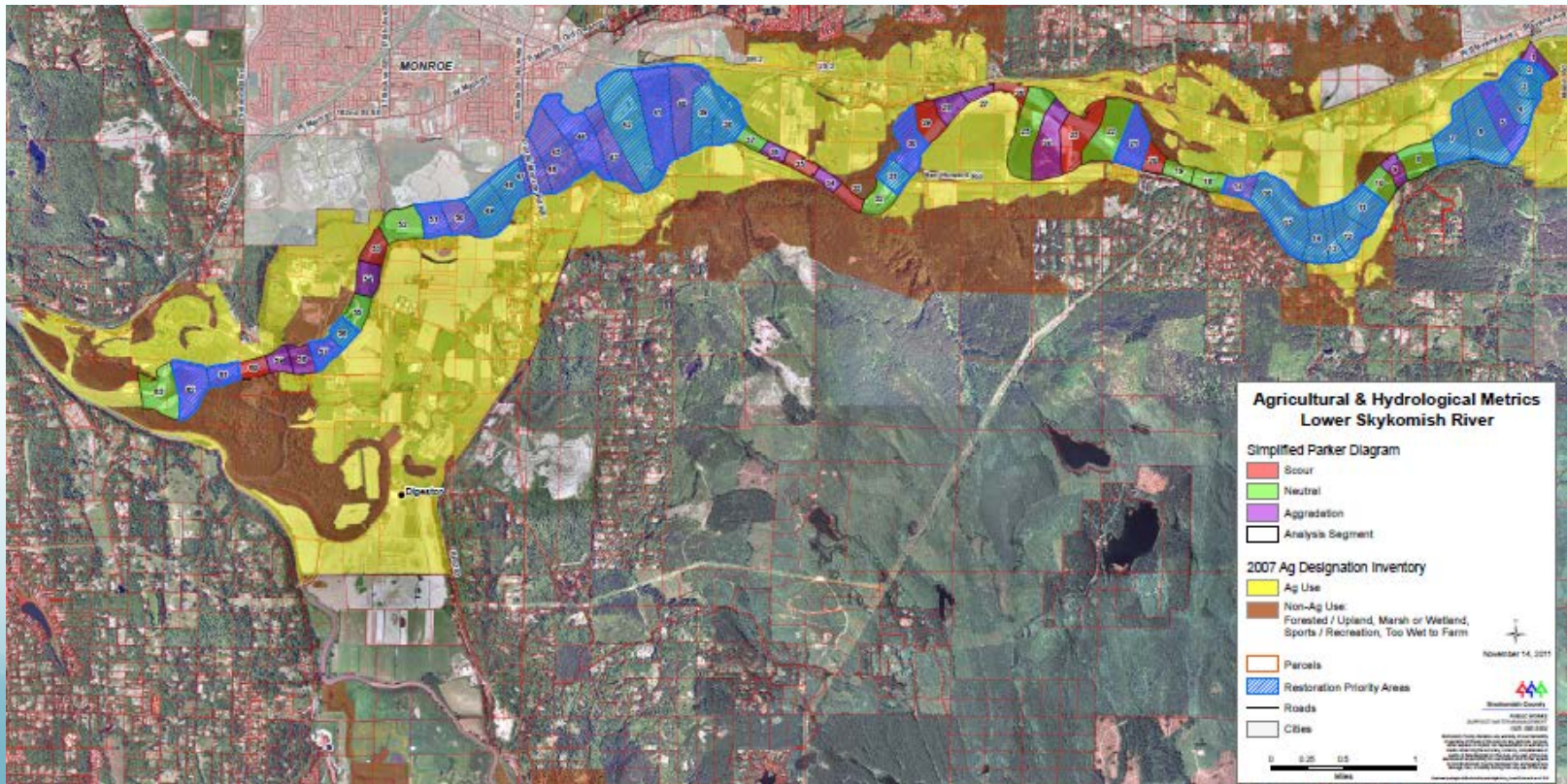
# TDI connects fish & farm interests

TDI brings together (voluntarily) farm, flood control, fish interests / tribes, at a reach or appropriate scale



# TDI combines projects into net gain packages

- Project design assistance to reduce impacts, improve benefits
- Individual projects aggregated into net gain package



# TDI supports implementation: funding & permitting

- Confirmed hypothesis: technically sound, net gain packages of fish-farm-flood control projects get streamlined approvals
- Funding: Coordinated Investment for Floodplains (WA State Legislature's Capital Budget)
  - 2013-15 round: \$5.2 million for Stillaguamish & Snohomish farm-fish packages
  - 2015-17 round: requests due May/June 2014
- Permitting: net gain above reg. minimums, based on sound tech info, broad support = streamlined approvals

# TDI helps monitor & evaluate performance

- Identify efficient means to monitor fish-farm gain
- Evaluate performance, net gain progress
- Adapt tools, strategies, net gain packages to improve performance, ensure net gain