

**SUMMARY NOTES**  
**SNOHOMISH SUSTAINABLE LANDS STRATEGY**  
**EXECUTIVE COMMITTEE PHASE 3.5 2016, SNO. FORUM JOINT SESSION**  
**Monday February 4, 2016 9:00 – Noon**  
**Waltz Building 116 Avenue B, Snohomish, Washington**

**PARTICIPANTS**

Dan Evans, SLS co-facilitator	Tristan Klesick, SLS Co-Chair (Ag)
Cynthia Carlstad, SLS co-facilitator	Brian Bookey, EC Agriculture rep
Terry Williams, Tulalip Tribes, SLS Co-Chair (Fish), and Forum Chair	Kirk Lakey, WA Depart Fish & Wildlife
Ben Swanson, City of Snoqualmie	Allen Gibbs, Pilchuck Audubon Soc.
Bob Heirman, Sno Co Sportsmen Assn	Paul Cereghino, NOAA Restor. Center
Joe Neal, US Forest Service	C.K. Eidem, SLS Executive
Gregg Farris, SnoCo SWM	Kristin Kelly, SLS EC Pilchuck Audubon
Scott Powell, City of Seattle	Dave Remlinger, SLS Exec. Cmte
Mike Rustay, SnoCo, Sno Forum tech committee co-lead	Ralph Svrjcek, Ecology
Sharon Swan, SnoCo Parks	Chantell Krider, story mapping
Kirt Hanson, SnoCo, SWM	Nick Bratton, Forterra
Monte Marti, Snohomish CD, SLS EC	Dan Calvert, Puget Sound Partnership

**PURPOSE:** Joint session of the SLS and the Snohomish Basin Salmon Recovery Forum as part of new SLS initiative to establish closer working relationships with the two watershed groups in SnoCo (Forum and Stillaguamish Watershed Council), the SnoCo Ag Board, and to refocus on projects and actions at the reach level. Part of the joint session included an SLS overview and a discussion of common priorities and actions.

Terry Williams presided over the joint session, as Chair of the Forum and Co-Chair (with Tristan Klesick) of the SLS Executive Committee. Mike Rustay, Snohomish County's watershed coordinator for the Snohomish Basin, assisted with facilitation of Forum business.

**Inserted Below**

1. Agenda for the Snohomish Forum Meeting
2. SLS PowerPoint Presentation

## Snohomish Basin Salmon Recovery Forum Agenda

Thursday, February 4, 2016 • 9:00 – 12:00 am  
Waltz Building, 116 Avenue B, Snohomish

	Topic	Presenter/ Facilitator	Time
1	<b>Introductions and announcements</b> <ul style="list-style-type: none"> <li>• Review Agenda</li> <li>• Public Comment</li> <li>• Lead Entity Staffing</li> </ul>	Chair, Terry Williams  Mike Rustay	9:00 - 9:15  9:15 - 9:20
2	<b>Forum Business</b> <ul style="list-style-type: none"> <li>• Lead Entity Work Plan</li> <li>• 4-yr Work Plan</li> <li>• Adopt SRFB Round Schedule and RFP</li> </ul>	Mike Rustay Morgan Ruff	9:20 - 10:15
3	<b>Regional Updates</b> <ul style="list-style-type: none"> <li>• Salmon Recovery Council</li> <li>• Local Integrating Organization</li> </ul>	Scott Powell Kirk Lakey	10:15 - 10:30 10:30 - 10:40
	Break		10:40 - 10:55
4	Snoqualmie Updates	Janne Kaje	10:55 - 11:15
5	Other Basin Updates	Mike Rustay	11:15 - 11:35
6	<b>Sustainable Lands Strategy</b> <ul style="list-style-type: none"> <li>• Update and New Meeting Schedule</li> </ul>	Dan Evans	11:35 - 11:55
7	<b>Meeting Wrap Up - Adjourn</b> <ul style="list-style-type: none"> <li>• Next meeting is May 5, 2016 in Snohomish</li> </ul>	Chair, Terry Williams	11:55-12:00

Sustainable Lands Strategy Overview  
for the  
SNOHOMISH BASIN SALMON RECOVERY FORUM

**“Net Gain” for Fish, Farms, Flood Control**

February 4, 2016

Dan Evans [dan@danevansconsulting.com](mailto:dan@danevansconsulting.com)

Cynthia Carlstad [cynthia@carlstadconsulting.com](mailto:cynthia@carlstadconsulting.com)

## Sustainable Lands Strategy

### Reconciling fish, farm, flood control mandates



Problem: fight over flood plains, estuaries

SLS' Triple Bottom Line:  
"Net Gain" for --

- Fish & envt'l restoration, Tribal treaty rights
- Farms & ag productivity
- Flood control, resilience



## SLS APPROACH

- **Inform**—Compile farm-FC-fish information into an integrated geographic information system (GIS)
  - **Connect**—Bring together people and groups working for fish-farm-flood control (F3) “net gain”
  - **Build**—Create packages of activities that represent overall benefit for farms, fish, flood control/resilience
  - **Monitor & Evaluate** —Measure effectiveness of steps taken, adapt as needed to achieve desired progress
-

## **Sustainable Lands Strategy**

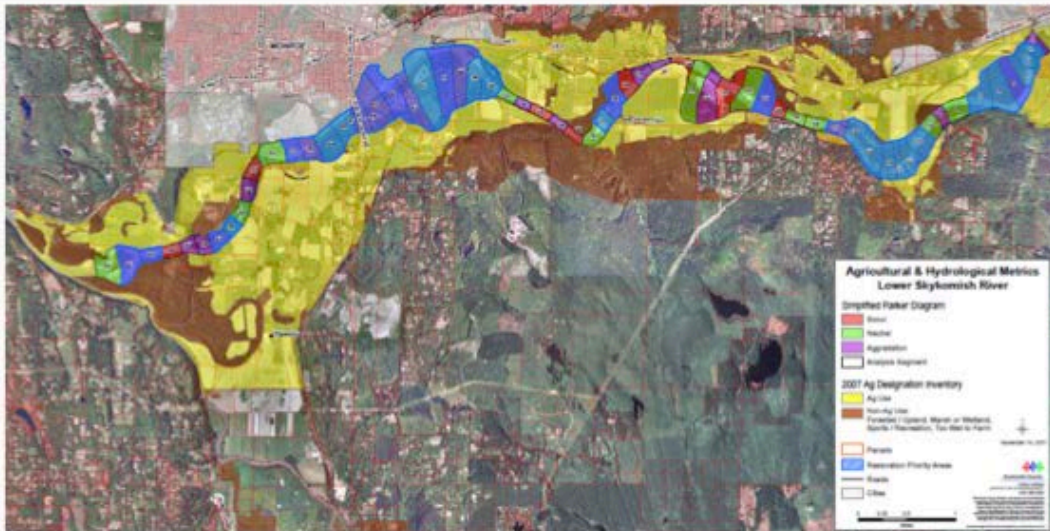
### **Value Proposition**

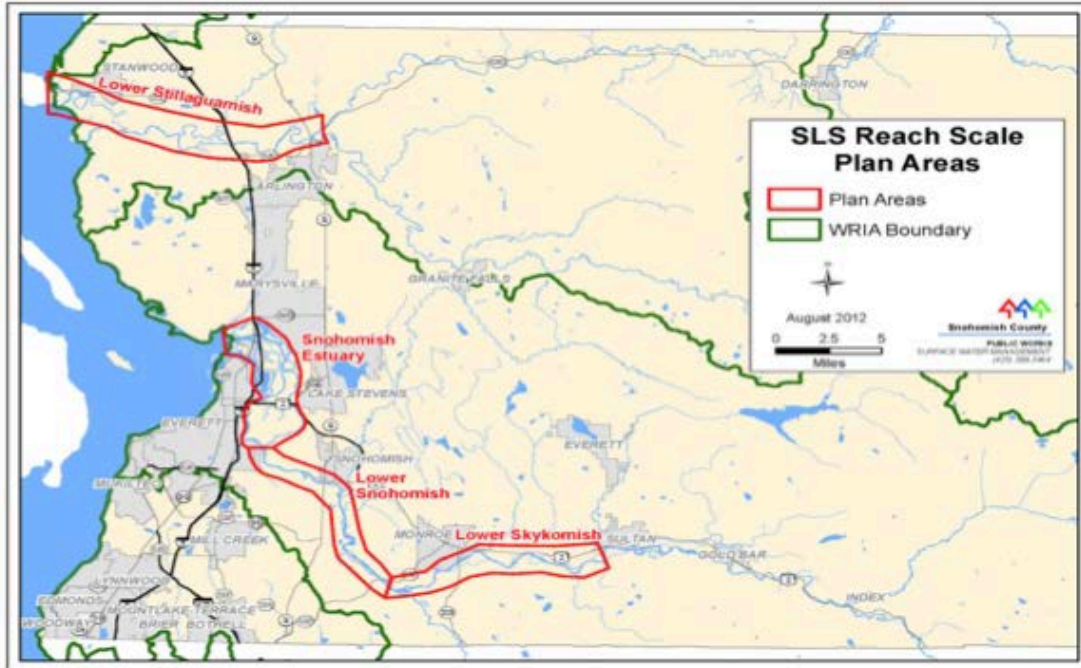
- Opportunity, not an obligation
- No regulatory authority, but...
- Facilitates fish/farm/flood control “net gain” thru:
  - Collaborative table, respects fish & farm mandates
  - Best available info: assessmts, W/S plans, modeling
  - Technical, design, implementation support (FDI/TDI)
  - Packaging fish/farm/flood control projects, measures
  - Broad support, reduced friction
  - Streamlined approvals (permits, funding)

# Sustainable Lands Strategy

## Lower Skykomish Reach Example

- Early SLS farm/fish cooperation, net gain package
- Write up – template for reach-scale packages
- Reach-scale permits, funding







## Progress

- Multi-benefit, net gain approach catching on:
  - Flood Plains by Design – Nature Conservancy, Feds
  - WA St Leg: Coordinated Investmt (CI) for Floodplains
  - Other F3 efforts in King, Whatcom, Skagit counties
  - Resilient Lands & Waters Initiative (Presidential declar)
- Integrated Info: assessments, modeling, GIS, DST
- Collaboration: > trust & coordination, but partisans...
- Funding for Pkgs: \$5.3m for Stilly, Sno basins in CI-9
- Streamlined Approvals: e.g., Drainage Maintenance (5-yr programmatic), Ag Enterprise Zone at Tulalip

## SLS “Refocus”

1. Emphasis on implementation of specific objectives:
  - Integrated reach packages
  - Climate resilient tools and strategies (eg, water mgt)
  - Demo coordinated tech, design, implementation support system (“Floodplain Design Team”)
2. Closer coord. w/ Watershed Councils, Tech Cmtes
3. Build broad support for policies, programs (eg, resource land protection) that produce fish-farm-flood “net gain”