




LOWER TOLT RIVER CORRIDOR VICINITY MAP

-  Major Road
-  Tolt River Basin Boundary
-  Incorporated Area

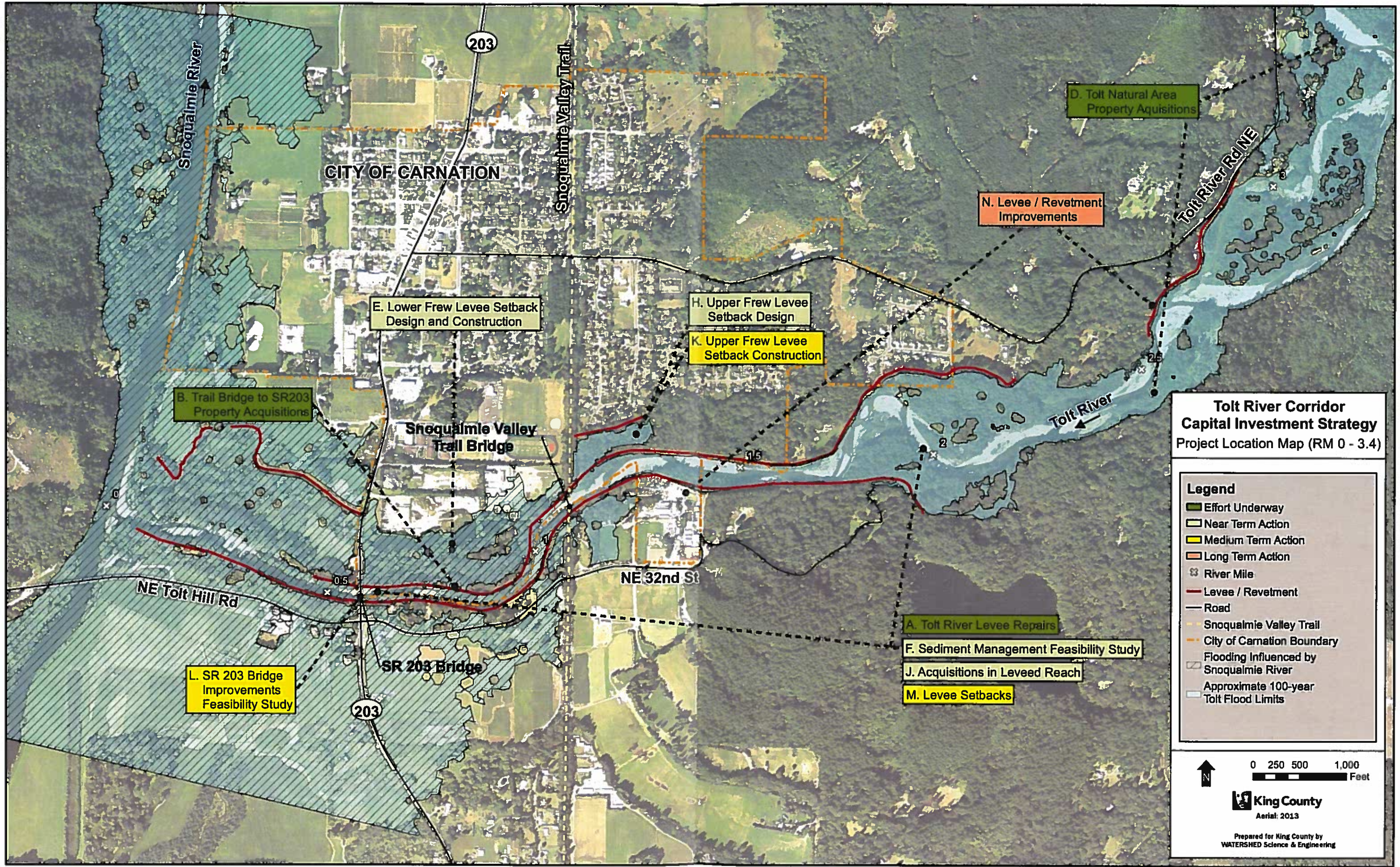


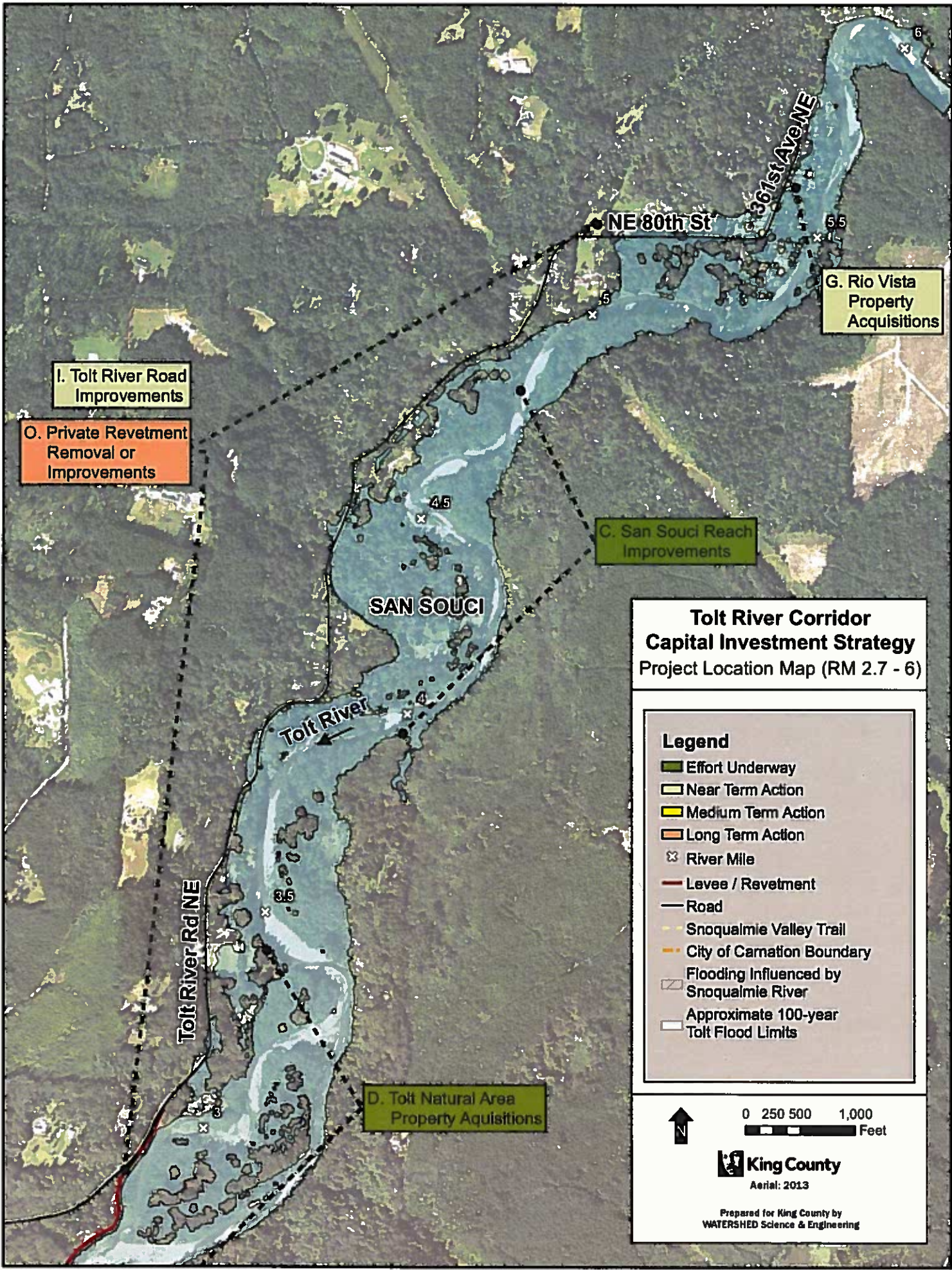
Produced by:
GIS, Visual Communications & Web Unit,
King County IT Services, Natural Resources & Parks

VC File:
smb://kc.kingcounty.lc/dnrrp/kcvt/vc/cart/Rivers-Floodplain
Mgmt/1505_4537L_TotCAP_LOCMAP.ai LPRE

GIS File:
smb://kc.kingcounty.lc/dnrrp/kcvt/gisvc/WORKING/
LAUREL/2_GIS/3 ArcMap 8.3 Projects/
1412_TotCorriActionPlanMap2.mxd







I. Tolt River Road Improvements

O. Private Revetment Removal or Improvements

G. Rio Vista Property Acquisitions

C. San Souci Reach Improvements

SAN SOUCI

Tolt River

D. Tolt Natural Area Property Acquisitions

Tolt River Corridor Capital Investment Strategy Project Location Map (RM 2.7 - 6)

Legend

- Effort Underway
- Near Term Action
- Medium Term Action
- Long Term Action
- River Mile
- Levee / Revetment
- Road
- Snoqualmie Valley Trail
- City of Carnation Boundary
- Flooding Influenced by Snoqualmie River
- Approximate 100-year Tolt Flood Limits



0 250 500 1,000 Feet

King County
Aerial: 2013

Prepared for King County by
WATERSHED Science & Engineering