



# Snohomish County Council News

Councilmember Terry Ryan

February, 2016



## Terry's February Newsletter

### QUICK LINKS



Share with a Friend

[Assessor Services  
Snohomish County  
Homepage](#)

[County Council  
Homepage](#)

[Link to Council Webcasts](#)

[Election Information  
Jail Register](#)

[Job Opportunities](#)

[Outstanding Warrants](#)

[Public Records](#)

[Marriage Licenses](#)

[Property Information](#)

[Recorded Documents](#)

[Registered Sex Offenders](#)

[Solid Waste Services](#)

[Zoning Maps](#)

[Keep Informed On  
Neighborhood](#)

[Development Projects  
Building Permit and](#)

[Land Use Activity Reports](#)

[Construction Traffic  
Alerts](#)

[Volunteer Opportunities  
Who represents you?](#)

[Subscribe to Snohomish  
County's Weekly Roads  
Construction Update](#)

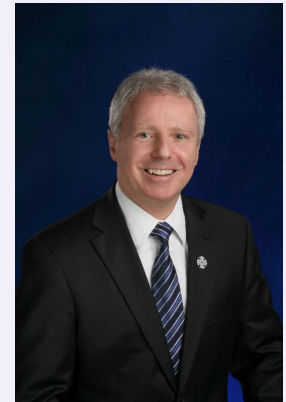
3000 Rockefeller Ave., M/S 609  
Everett, Washington 98201

**Office:** 8th floor, Robert J. Drewel Building

**Phone:** 425-388-3494

**E-Mail:** [Terry.Ryan@snoco.org](mailto:Terry.Ryan@snoco.org)

**Snohomish County Council**



### County Executive

We have a new Executive, Dave Somers who was elected to a four year term beginning January 1st. The County Council is working with the new Executive during this time of transition at Snohomish County. Good luck to Executive Somers and his administration!

### County Council

The County Council elected me to serve as Chairman of the County Council for 2016. I am honored to have the unanimous support of my peers for this new role. I want to congratulate Councilman Brian Sullivan for being elected unanimously to serve as Vice-Chairman for the council this year as well. Brian has been a long time public servant, and he offers a lot of experience to our council. We are committed to working hard for the betterment of Snohomish County.

### County Council Vacancy

We have one vacancy on the County Council due to Dave Somers being elected to the County Executive. The process for filling this council position for District 5 is as follows- The Snohomish County Democrats met February 6 to vote for and selected three candidates. These candidate names will be sent to the County Council. The council will meet February 29 to interview the candidates, then vote and appoint one of the three candidates to the County Council. In the event of a tie vote, the

candidate names will be sent to the Governor's office and he will appoint one of the candidates.

## **Courthouse Project**

As you know, the County Council decided last August to put the courthouse project on hold for a multitude of reasons. At that time, we asked our staff to come up with other options that ideally will be less costly and avoid the pitfalls of the parking debacle which was the final straw on the original project.

With the new leadership at Snohomish County, the new Executive is putting a committee together of stakeholders to provide input and review the options to be forwarded to the County Council. Options will likely include building a more modest Courthouse on our current campus (as opposed to across the street to the north), constructing a smaller building along with a complete rebuild of the existing courthouse, or possibly constructing a new courthouse on its current location with a larger footprint.

I personally would like to see the courthouse built on our current campus. This location is preferable for transporting people to and from the jail in the existing underground tunnel. That is much safer and less costly than transporting the same people in vans.

No matter what, we will work hard to find a more viable courthouse option which will likely be a more modest building than the original proposal. I will keep you posted.

## **Picnic Shelters for rent**

Snohomish County has many parks with Picnic Shelters that can be reserved and rented for parties, family events and organization parties. Some of the local county parks that have shelters are- Willis Tucker Park, Miners Corner Park, Tambark Creek Park and Martha Lake Park.

Shelters may be reserved online through the Snohomish County Website below. All shelter reservations are available from 7:00 a.m. to one hour before dusk. Shelter capacities and more information can be found on the following website: <http://snohomishcountywa.gov/1120/Picnic-Shelters>

## **Fighting for Snohomish County in Olympia**

Part of the job of a County Council member is to represent my constituents in Olympia. On February 2, I spoke at a luncheon with legislators and members of the Economic Alliance of Snohomish County where I am on the board of directors. After the program, County Executive Dave Somers, Councilman Brian Sullivan and I met with nine different legislators to discuss Snohomish County needs including more money for roads and programs to help the homeless. I'm always ready to drive to Olympia to testify on a bill or talk with legislators when it makes a difference for our County.



## **Paine Field - courtesy of Paine Field Happenings**



### **\$1,000 Scholarship Offered**

The Paine Field Chapter of the Washington Pilots Association (WPA) is proud to offer its annual Kurt Mason Aviation Education Scholarship to students seeking opportunities in flight training or other aviation-related education programs (such as Airframe & Powerplant certification, aviation or aerospace degree programs, etc.).

To apply, please download the application at:

<http://www.painefieldwpa.org>

Deadline to apply is March 31. Please see application for eligibility and submission process details.

### **Fire Station Tours**





Captain Mace keeps an eye on the children, giving the parents an opportunity to get a picture of the Dreamlifter.

The Cedar Park Christian School in Mill Creek got a close up of the "Dream Lifter" during a fire station tour in January. The wingtip of the behemoth aircraft passes within 75 feet of the fire station when it taxis down the Alpha taxiway.

Tours of the fire station are one of the many public service functions the fire department provides. The tours are personalized, depending on the age and interest of the people in attendance. In January, 20 pre-school children and 21 adults were shown where the firefighters work and live for 24 hours a day, providing around the clock protection to the businesses at the Airport and the many aircraft that fly in and out of Paine Field.

The pre-school children get a close up look of the fire trucks and the safety equipment firefighters wear when they respond to an emergency. They're taught how dangerous fire is and watch a normal looking person transform into a totally different looking person (can be scary) when he puts on his protective clothing and breathes through a self-contained breathing apparatus. The goal is to teach children and in this case the adults as well, to never go "back" into a fire once you escape. The firefighters can go into fires because they have special clothing and breathe air from a bottle on their back.

Coloring books, fire stickers, water soluble tattoos and plastic fire helmets are a few of the mementos the children get to take home to remember their tour of the Paine Field Fire Department. For more information call 425-388-5480.

**B/E Aerospace Consolidates at Paine Field** - courtesy of the Economic Alliance of Snohomish County

EASC investor B/E Aerospace (NASDAQ; BEAV) manufactures interior components for commercial and business aircraft; new and re-configurations. They have locations across the world, including a 240,000 facility constructed at Paine Field in 2013. B/E (Flight Structures) relocated their Marysville operation and 400 employees to Paine Field the end of 2015. The relocated operation designs and assembles interior re-configurations for existing aircraft; other business lines at the facility

include lavatories, passenger service units and oxygen systems.

## **County Arts Commission Accepting Submissions to Exhibit Sculptures on County Campus**

The Snohomish County Arts Commission announced an invitation for artists to submit images of existing free-standing sculptural works to be considered for temporary installation and exhibition in an open air setting on the Snohomish County Plaza in Everett, WA.

"The opportunity for the public to have access to public art is a continued goal of the Snohomish County Arts Commission," said Robert Fairfax, Commission Chair representing District 5. "By offering this annual sculpture exhibit, we activate dialog and conversations around cultural expression, artistic style, and the creative process".

Freestanding sculpture that is suitable for an outdoor setting is a requirement for submissions. The artwork must be durable, vandal resistant, and pose no safety threats. Sculptures must be ready to install in May and available to the County until the end of 2016. A fee of \$1,000 will be paid to each artist that is selected to exhibit work.

Details of eligibility and other program requirements are included in the application package, which must be filled out and returned to the Snohomish County's Office of Economic Development by 5 p.m. Monday, April 4, 2016. Applications received after that time and date will not be considered.

Applications are available by contacting: the Office of Economic Development at 3000 Rockefeller Avenue, M/S #411, Everett, WA, 98201; (425) 388.3186 [Wendy.Poischbeg@SnoCo.org](mailto:Wendy.Poischbeg@SnoCo.org) or at Arts Commission Website

## **Heritage Preservation Grant Program Accepting Applications**

Snohomish County's Office of economic development announced that it is currently accepting applications from public and nonprofit agencies for projects that develop and promote heritage preservation in the county. By providing matching funds on a competitive basis, the Community Heritage Program supports projects that promote the public's access to county history. Funding is available for professional development, public education, capital improvements or collections management.

Money is awarded from recording fees collected by the Snohomish County Auditor. The allocation of these fees for projects that "promote historical preservation or historical programs, which may include preservation of historic documents" is authorized under RCW 36.22.170.

Previous grant awards have been used to repair moisture damage to the front entry and crew quarters of the Mukilteo Lighthouse and a total roof replacement of the historic Startup Gym in Sultan, WA. Other funds have been awarded for the purchase of archival materials for storing museum

artifacts and the digitization of brittle newspapers.

Details of eligibility and other program requirements are included in the application package, which must be filled out and returned to the Snohomish County's Office of Economic Development by 5 p.m. Monday, March 14th. Applications received after that time and date will not be considered.

Applications are available by contacting the Office of Economic Development at 3000 Rockefeller Avenue, M/S #411, Everett, WA, 98201, (425) 388.3186 or [Wendy.Poischbeg@SnoCo.org](mailto:Wendy.Poischbeg@SnoCo.org).

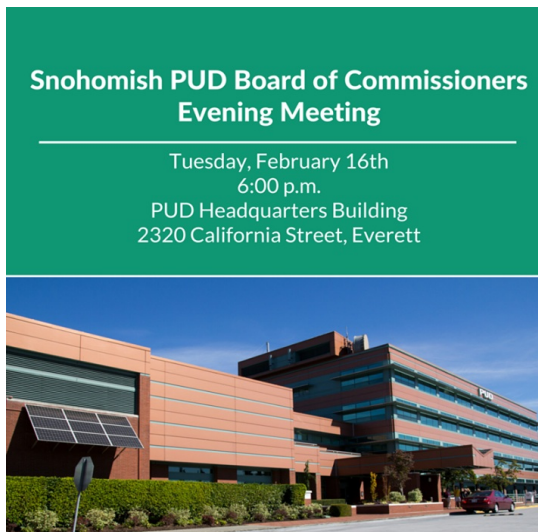
## **PUD Billing Concerns**

Several constituents have contacted me about the PUD's new billing procedures. Snohomish County PUD is a completely separate entity with its own elected officials. I have no authority over the PUD.

If you are dissatisfied with the billing procedures, contact the PUD. If the staff is unable to resolve the issue, there are three elected PUD commissioners. Contact them.

The PUD is holding an open house on February 16 to discuss their billing procedures. The information is below. Answers to frequently asked questions are also available on the PUD web site ([www.snopud.com](http://www.snopud.com)).

If your issues are still not resolved, you can contact the Washington State Utilities and Transportation Commission. (<http://www.utc.wa.gov/consumers/Pages/ConsumerComplaints.aspx>) They have consumer protection specialists that can assist you with billing disputes.



## **Snohomish County PUD meeting announcement**

Good news! In response to the recent request by many of our customers for an evening meeting our PUD Board of Commissioners has scheduled one. Place Tuesday, Feb 16 at 6:00 p.m. on your calendar to attend the PUD Commission meeting. PUD staff will be there with answers to monthly billing and estimated billing questions as well as to help concerned customers with their high winter bills, set up billing

arrangements and provide other program information.

Snohomish PUD Board of Commissioners Evening Meeting

Tuesday, February 16

6:00 p.m.

PUD Headquarters Building

2320 California St, Everett

PUD Awards Mini-Grants for Energy Projects at Schools - courtesy of

## **Snohomish County PUD Grants**

Budding young scientists and engineers will get a boost this year with help from Snohomish County PUD. Local students will soon be assembling Snap Circuits and racing solar cars. They'll learn about energy transformations and water turbines. The PUD recently awarded 13 mini-grants for science-related educational projects in several local school districts. The grants help schools incorporate energy and water education into their curriculum. The following three teachers and schools in my district received support for the 2015-2016 school year:

### **Brier Elementary, Shannon Gonsalves, 4th-6th grade**

After working with a Motion and Design science kit, students will build solar cars to learn about the alternative energy source and enhance their understanding of STEM concepts.

### **Martha Lake Elementary, Anna Walter, 4th grade**

In alignment with the Next Generation Science Standards, students will build models of wind generators to create energy. Students will also extend their learning of technology by designing experiments with circuitry using Makey Makey boards.

### **Penny Creek Elementary, Deb Strong, 4th-5th grade**

While learning about the forms of energy and how they can be transferred and transformed, students will create Rube Goldberg machines through the engineering design process. Students will also write letters with a call to action on an energy topic they find interesting and relevant.

## **City Seeking Applications for AWC Center for Quality Communities Scholarship**

The City of Mill Creek is now accepting applications for the Association of Washington Cities Center for Quality Communities Scholarship. Each city and town can nominate one student for the scholarship. Nominations are sent from the City of Mill Creek to the Center for Quality Communities. Six \$1,000 scholarships will be awarded to high school students who plan to pursue a post-secondary degree in fall 2016. Scholarship funds will be sent directly to the institution. Funds can be used for education expenses and will be deposited directly into a student account. Scholarship winners will be notified in May, 2016.

Students interested in competing for the Center for Quality Communities scholarship fund must be involved (or have been involved) with a city government, community and/or school leadership activity;

Eligible to graduate from high school, completed home school or received a GED in spring/summer 2016;  
Live within the City limits of Mill Creek; and  
Plan to continue education in the 2016-2017 academic year at an accredited college or trade school on a half-time or more basis.

Interested in applying?

Application material can be found at [www.cfqc.org](http://www.cfqc.org). Completed applications are due to the City of Mill Creek no later than March 1, 2016.

Materials should be sent to:

City of Mill Creek

Attention: Kelly Chelin

15728 Main Street, Mill Creek, WA 98012

[kelly@cityofmillcreek.com](mailto:kelly@cityofmillcreek.com)

The Center for Quality Communities promotes municipal leadership development and civic engagement. The Center's goal is to develop a broad public understanding of the important role that cities and towns play in Washington. The Center is a 501(c)(3) organization.

## **Puget Sound salmon recovery projects receive more than \$33M - courtesy of Puget Sound Partnership**

The Puget Sound Partnership and Washington Salmon Recovery Funding Board announced in December more than \$33 million in grants to Puget Sound organizations for projects that will restore salmon habitat and conserve pristine areas, all targeted at bringing salmon back from the brink of extinction. Nearly \$25 million of those funds come from the Partnership's Puget Sound Acquisition and Restoration Fund, which is dedicated to funding the most effective projects in the Puget Sound region. The Salmon Recovery Funding Board concurrently funded an additional \$8.3 million for Puget Sound priority projects from the region's share of state salmon recovery funds.

## **Immerse Yourself in Puget Sound and Craft Your Own Volunteer Experience! Join WSU Snohomish County Extension Beach Watchers**

Help protect Puget Sound's waters, wildlife and landscape through education, research and stewardship. Receive 80 hours of university caliber training involving field trips and expert lectures on topics like salmon, water quality, ocean acidification, intertidal life history, coastal processes, native plants, youth education techniques, and so much more! After the trainings, volunteer at least 80 hours in projects you select over the next two years. Projects range from doing low-tide education at beaches to water quality sampling to newsletter article writing. You can join a team or work on your own. You are also welcome to bring your own ideas!

The Beach Watcher training will be based out of McCollum Park, Everett every Friday at 9 AM - 3:30 PM from March 18 - May 27, 2016 and will include two Saturday field trips on April 23 and May 14, 2016. An



application is due on February 26 and a \$35 materials fee are required (waivers available). For more information, please contact Yolimar Rivera at (425) 357-6029 or yolimar.rivera@wsu.edu, or visit our website at [www.beachwatchers.wsu.edu/Snohomish/training](http://www.beachwatchers.wsu.edu/Snohomish/training).  
Beach Watchers Facebook Page:  
[www.facebook.com/snohomishbeachwatchers](http://www.facebook.com/snohomishbeachwatchers)

## **Plan now: Weekend I-5 lane closures ahead between Everett and Marysville**

Drivers in Snohomish County need to plan now for eight weekends of significant lane closures on Interstate 5 between Everett and Marysville while aging expansion joints are replaced. The first weekend is scheduled to occur Feb. 26-29.

During the eight weekends, contractor crews working for the Washington State Department of Transportation will reduce I-5 to two lanes across the Steamboat Slough and Ebey Slough bridges to replace aging and deteriorating expansion joints. Only one lane will be open overnight.

### **Expect lengthy delays**

More than 130,000 vehicles travel this stretch of I-5 daily. WSDOT traffic engineers estimate that 30 percent of those vehicles need to find other ways to travel around the area in order to avoid major backups and delays.

There are a limited number of detours through the area, so drivers should consider traveling early or late in the day when volumes are lighter. Carpooling and public transportation are also great alternatives.

### **Driver impacts:**

\* At least two lanes will remain open during the day Saturdays and Sundays, but only one lane will be open overnight (generally from 11:30 p.m. to 6 a.m.).

\* Lanes will be narrower than usual, which means the speed limit will be reduced to 40 mph through the work zone.

### **Why weekend closures are necessary**

The expansion joints on the two bridges are long, ranging between 48 and 71 feet. Because of their size, they can only be replaced during weekends when longer hours are available to chip out the old concrete, remove the existing joints, install the new ones, and pour new concrete. "It's challenging to schedule any closure. There is never a good time of the year for eight weekends of lane closures while taking advantage of good weather and trying to avoiding special events," said WSDOT Northwest Region Administrator Lorena Eng. "We consulted with local cities, jurisdictions and agencies on the best way to accomplish this work. After careful evaluation, we decided the work needed to get done quickly and before the summer travel season heats up."

Scheduled weekend lane closures - 9:30 p.m. Friday to 5 a.m. Monday  
February

\* Friday, Feb. 26 to Monday, Feb. 29 - southbound lanes

March

\* Friday, March 4 to Monday, March 7 - southbound lanes

\* Friday, March 11 to Monday, March 14 - northbound lanes

\* Friday, March 18 to Monday, March 21 - northbound lanes

\* Friday, March 25 to Monday, March 28 - northbound lanes

April

\* Friday, April 1 to Monday, April 4 - northbound lanes

\* Friday, April 15 to Monday, April 18 - northbound lanes

\* Friday, April 22 to Monday, April 25 - northbound lanes

The work is weather dependent and could be rescheduled due to extreme cold or heavy rain.

## **District Events:**

### **Bothell**

**February 24**

**6 - 7:30 pm**

Open House: Sammamish River Pedestrian Bridge Replacement

City Hall, Room 107/108

18415 101st Ave NE

Bothell, WA 98011

### **Mill Creek**

#### **Police Department Town Hall Meeting**

Meet Interim Police Chief Larry Dickerson and New Police Chief Greg Elwin

Talk with Officers, Detectives and other Police Staff

Emergency Preparedness Handouts

Learn about other services offered by the Department and City

Tuesday, February 16, 2016

5:00 pm- 7:00 pm

City Hall, Council Chambers

15728 Main Street, Mill Creek WA 98012

### **Mountlake Terrace**

## **Coffee with the City**

**Wednesday, February 10**

**Join us for casual conversation with city officials. Simply stop by for a cup of coffee and ask a question, listen to others, and get to know city officials.**

Time: 6:00 PM - 7:00 PM

Location: Recreation Pavilion - Jungle Room

Address: 5305 228th St. SW, Mountlake Terrace



**Mountlake Terrace - SJHA Spring Thaw Tournament February 12 - February 14, 2016**

- \* Tournament is open to PeeWee/12U teams registered with USA Hockey or Hockey Canada.
- \* Tournament is limited to a total of 16 teams. Multiple divisions may be formed based on registered teams and/or relative skill level.
- \* Each team will receive at least four games and a maximum of 6 games.
- \* All games will be played at one of the following rinks:
  - \* Olympic View Ice Arena
  - \* Lynnwood Ice Center
- \* All teams are required to stay at designated SJHA Host Hotels.
- \* All teams will be required to provide official roster.
- \* Entry fees are non-refundable.
- \* All games will be governed by USA Hockey rules and regulations.
- \* One ice scrape will be allotted for each game.
- \* Locker room facilities will be provided.
- \* 22202 70th Avenue W, Mountlake Terrace, WA 98043

I hope you found this eNEWSLETTER informative and useful. You can make it even more valuable by suggesting topics and issues for future newsletters. Please contact me at 425-388-3494, or e-mail [Terry.Ryan@snoco.org](mailto:Terry.Ryan@snoco.org). If you would like to share this newsletter, select the **Forward email** link below.

Sincerely,

**Terry Ryan**, Snohomish County Council