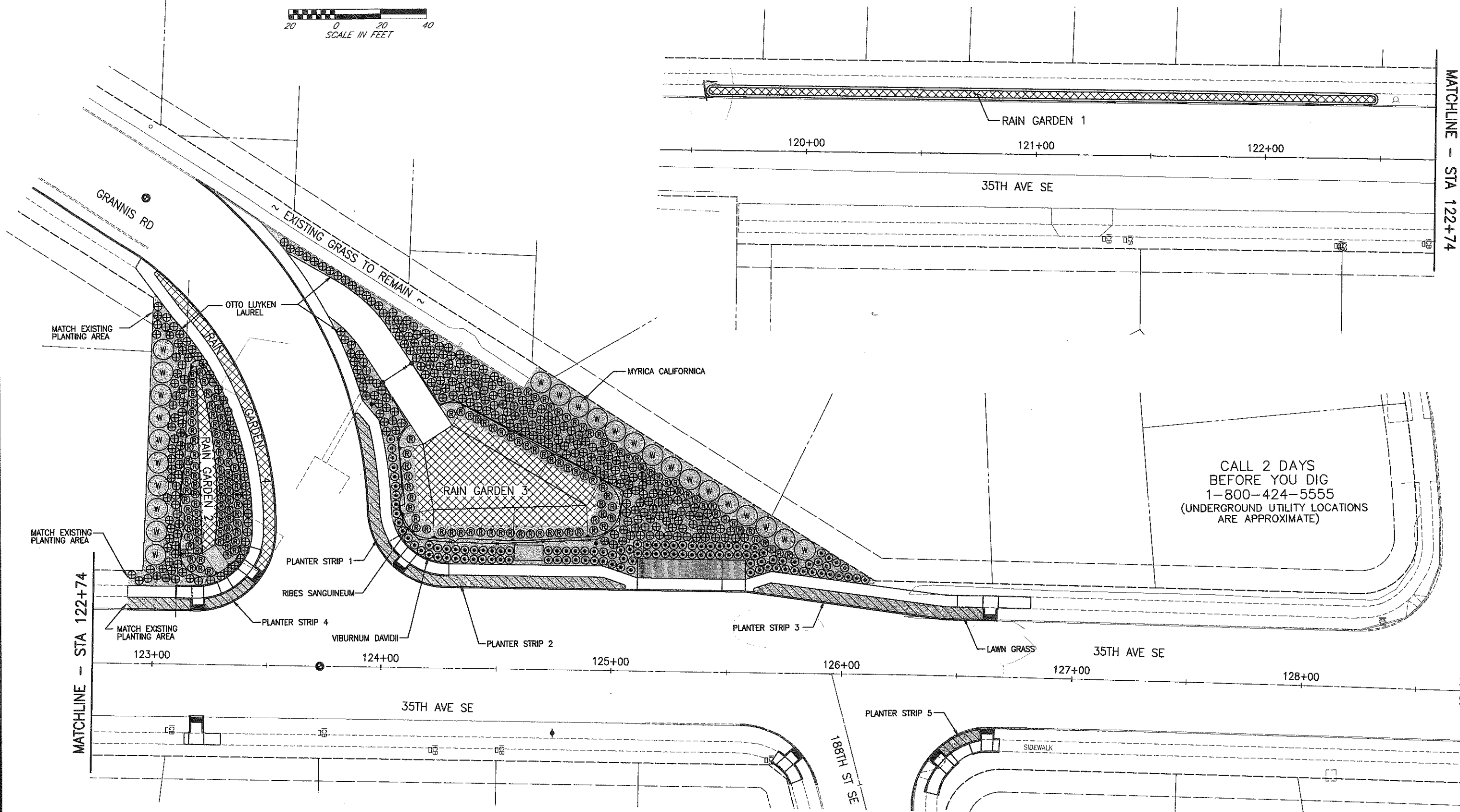
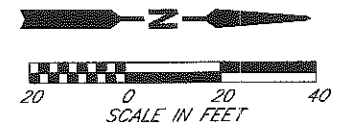


SECTION 16, T. 27 N., R 5 E., W.M.
SECTION 17, T. 27 N., R 5 E., W.M.



CALL 2 DAYS BEFORE YOU DIG
1-800-424-5555
(UNDERGROUND UTILITY LOCATIONS ARE APPROXIMATE)

NOTE: SEE SHEET LS2 FOR PLANT SCHEDULE LEGEND

PLAN CHECK		BY	DATE	Last Saved By: spwjhs Jan 30, 2012 - 11:35am					APPROVED FOR CONSTRUCTION OWEN B. CARTER, P.E. SNOHOMISH COUNTY ENGINEER 2/24/12 DATE APPROVED:	SNOHOMISH COUNTY DEPARTMENT OF PUBLIC WORKS PROJECT NO. RC# 1493	35TH AVE SE & GRANNIS RD INTERSECTION IMPROVEMENTS LANDSCAPING PLAN	REFERENCE SHEET NO.
				REGION NO.	STATE	FED. AID PROJ. NO.	SURVEY NO.					LS1
				10	WASH.		4062					SHEET 18 OF 37 SHEETS
				DESIGNED BY:	DRAWN BY:							
				LJT, MA	JHS							
				FIELD BOOK(S):	UPI#							
					06-0020							
DATE	NO.	REVISION	BY									

C:\Arch 33 Projects\1493 0623\0623\0623-LS1-1493-LS1.dwg, LSI, 1/30/2012 2:22:23 PM, spwjhs, 1:1

