

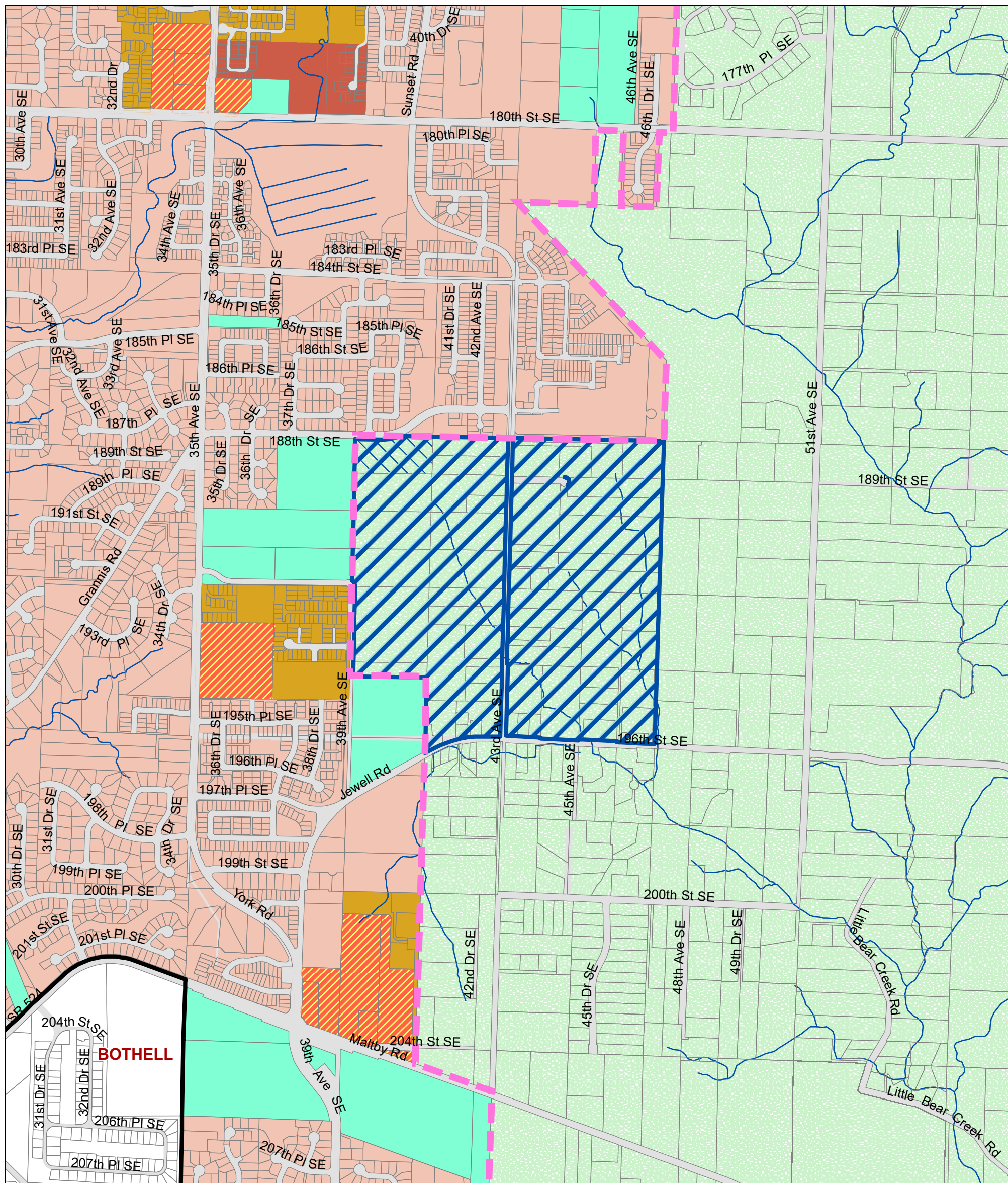
Docket XIX - Initial Review

Paula Crandall (SW2) - Option 3







Proposed Future Land Use Map






Comprehensive Plan Amendment



Proposed Future Land Use

-  Proposed SWUGA Expansion: Redesignate Rural Residential (1 DU/5 acres) to Urban Low Density Residential (ULDR)
-  Incorporated City
-  Urban Growth Area (Current)
-  Streams

Future Land Use

-  Rural Residential (1 DU/5 Acres Basic)
-  Urban Low Density Residential
-  Urban Medium Density Residential
-  Public/Institutional
-  Rural/Urban Transition Area Overlay

 Road Right of Way



All maps, data, and information set forth herein ("Data"), are for illustrative purposes only and are not to be considered an official citation to, or representation of, the Snohomish County Code. Amendments and updates to the Data, together with other applicable County Code provisions, may apply which are not depicted herein. Snohomish County makes no representation or warranty concerning the content, accuracy, currency, completeness or quality of the Data contained herein and expressly disclaims any warranty of merchantability or fitness for any particular purpose. All persons accessing or otherwise using this Data assume all responsibility for use thereof and agree to hold Snohomish County harmless from and against any damages, loss, claim or liability arising out of any error, defect or omission contained within said Data. Washington State Law, Ch. 42.56 RCW, prohibits state and local agencies from providing access to lists of individuals intended for use for commercial purposes and, thus, no commercial use may be made of any Data comprising lists of individuals contained herein.

Map: W:\plng\carto\doctet\Citizen_Initiated\Docket XIX_2017UGA_Prelim\ARCMAPS\PaulaCrandall_Option_3_Flu.mxd Date: 1/24/2017