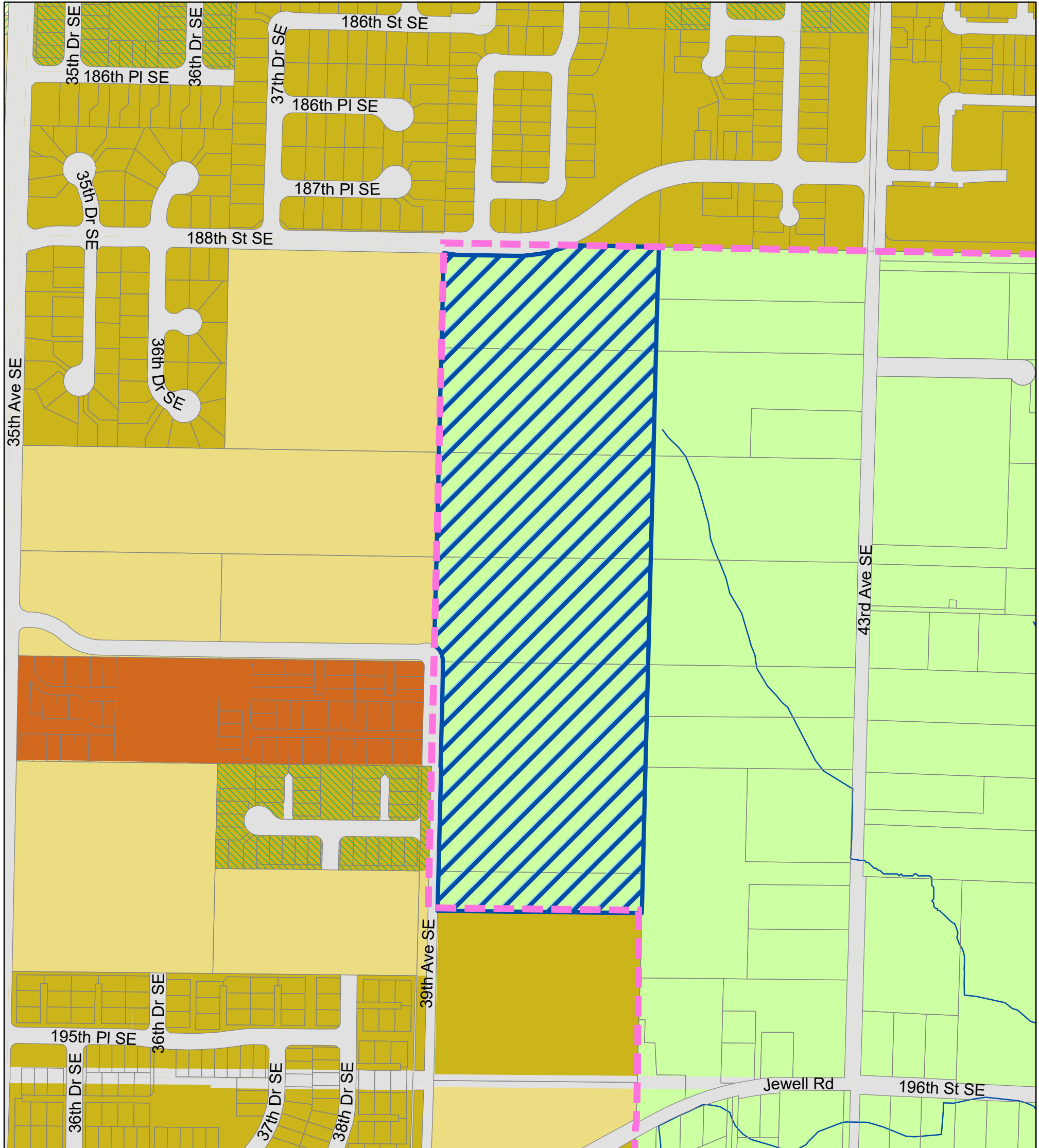


Docket XIX - Initial Review






Northshore School District (SW4)




Proposed Rezone



Proposed Zoning

-  Proposed SWUGA Expansion:
Rezone Rural-5 Acre to R-9,600
-  Incorporated City
-  Urban Growth Area (Current)
-  Streams
-  Road Right of Way

Current Zoning

-  LDMR
Low Density Multiple Residential

-  R-5
Rural 5-Acre
-  R-9,600
Residential-9,600 sq. ft.
-  R-7,200
Residential-7,200 sq. ft.
-  R-7,200 (PRD)
Residential-7,200 sq. ft.
-  Planned Residential Development



All maps, data, and information set forth herein ("Data"), are for illustrative purposes only and are not to be considered an official citation to, or representation of, the Snohomish County Code. Amendments and updates to the Data, together with other applicable County Code provisions, may apply which are not depicted herein. Snohomish County makes no representation or warranty concerning the content, accuracy, currency, completeness or quality of the Data contained herein and expressly disclaims any warranty of merchantability or fitness for any particular purpose. All persons accessing or otherwise using this Data assume all responsibility for use thereof and agree to hold Snohomish County harmless from and against any damages, loss, claim or liability arising out of any error, defect or omission contained within said Data. Washington State Law, Ch. 42.56 RCW, prohibits state and local agencies from providing access to lists of individuals intended for use for commercial purposes and, thus, no commercial use may be made of any Data comprising lists of individuals contained herein.

Produced by Snohomish County Department of Planning and Development Services, Cartography/GIS