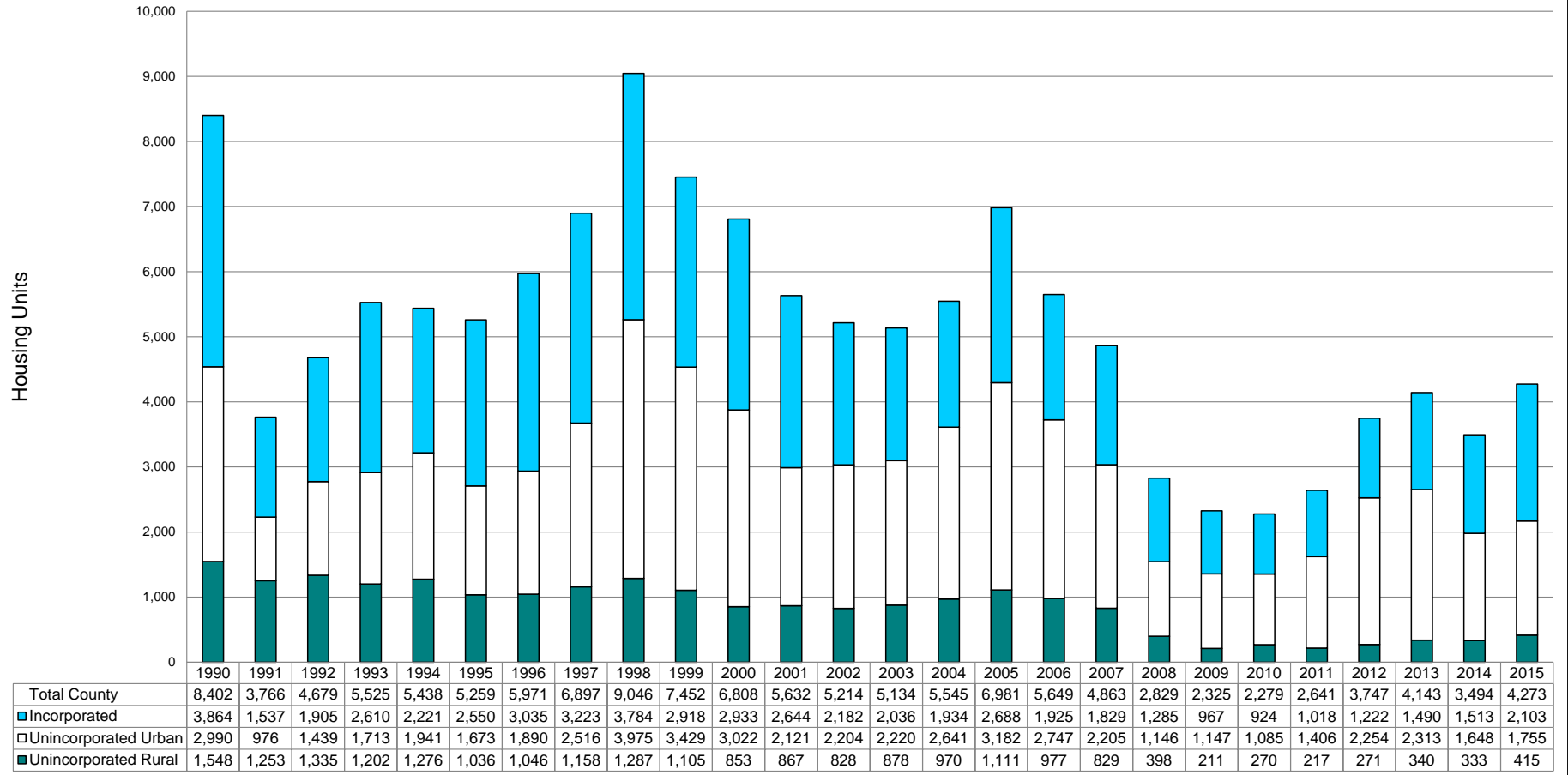
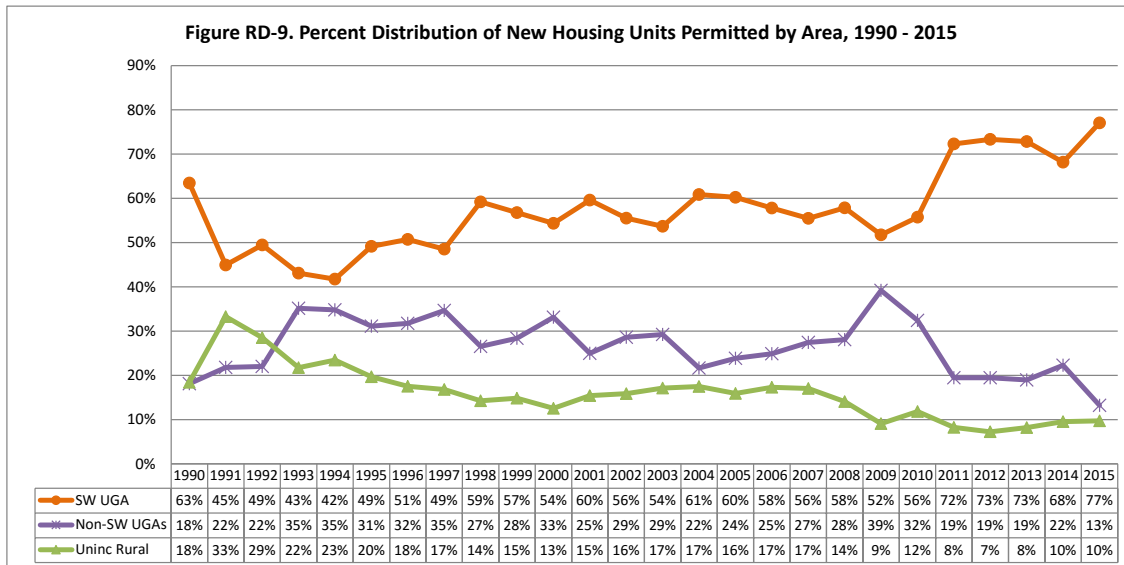
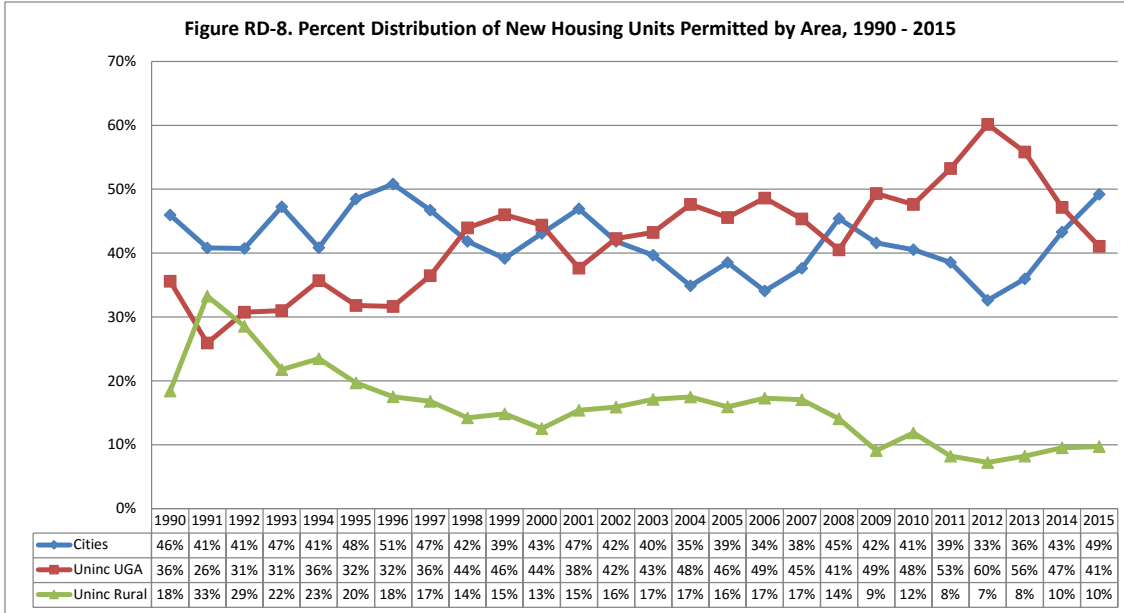


FIGURE RD-7. NEW HOUSING UNITS AUTHORIZED BY BUILDING PERMIT, 1990 - 2015

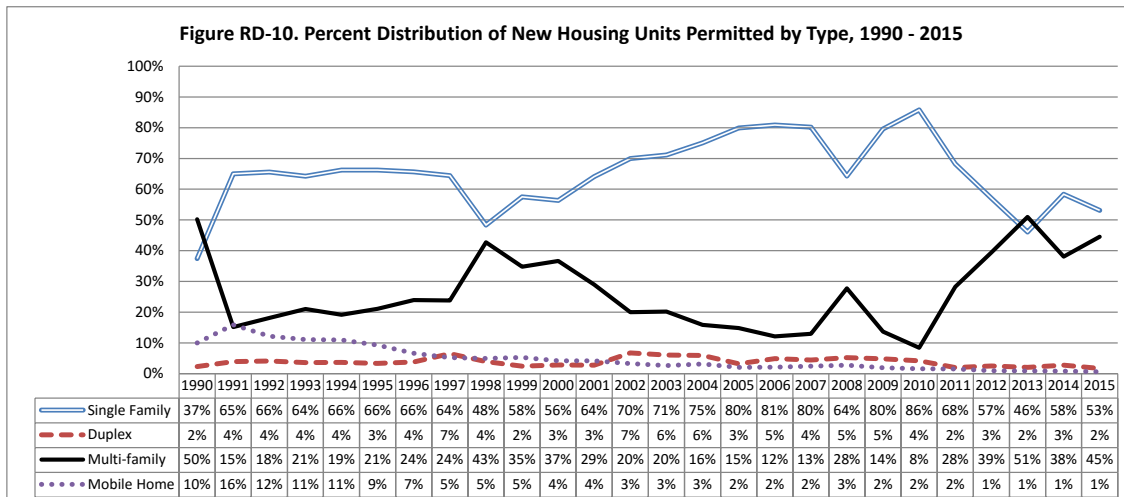


## Snohomish County Tomorrow 2016 Growth Monitoring Report

### Percent Housing Distribution by Area:

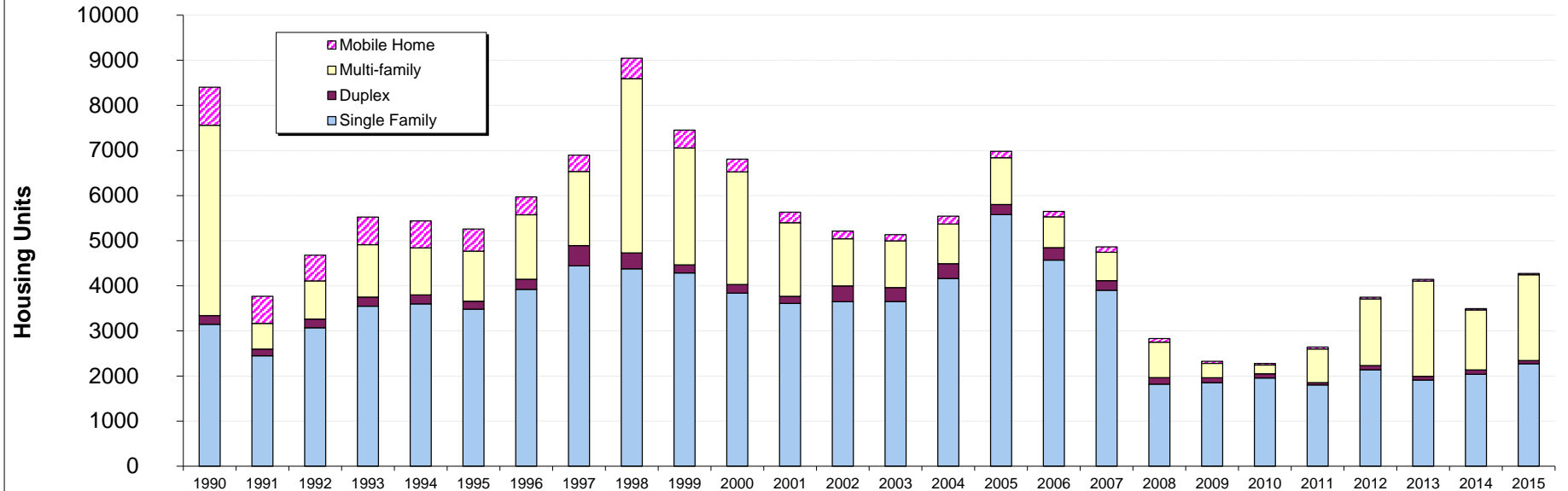


### Percent Housing Distribution by Type:



Snohomish County Tomorrow 2016 Growth Monitoring Report

Figure RD-11. New Housing Units Permitted by Type, 1990-2015, Snohomish County Total



Snohomish County Total Housing Units Permitted

Sno. Co. Total	1990	1991	1992	1993	1994	1995	1996	1997	1998	1999	2000	2001	2002	2003	2004	2005	2006	2007	2008	2009	2010	2011	2012	2013	2014	2015	1990-2015
	No.	No.	No.	No.	No.	No.	No.	No.	No.	No.	No.	No.	No.	No.	No.	No.	No.	No.	No.	No.	No.	No.	No.	No.	No.	No.	No.
Single Family	3,146	2,448	3,068	3,549	3,600	3,482	3,921	4,443	4,375	4,286	3,837	3,611	3,647	3,651	4,162	5,579	4,570	3,900	1,818	1,850	1,955	1,802	2,138	1,909	2,038	2,271	85,056
Duplex	194	148	194	200	198	176	226	450	354	180	192	156	352	310	327	223	276	215	147	112	96	52	94	84	97	73	5,126
Multi-family	4,221	571	847	1,162	1,043	1,111	1,429	1,643	3,866	2,591	2,496	1,631	1,044	1,037	881	1,037	684	629	785	318	192	746	1,478	2,112	1,331	1,902	36,787
Mobile Home	841	599	570	614	597	490	395	361	451	395	283	234	171	136	175	142	119	119	79	45	36	41	37	38	28	27	7,023
<b>TOTAL</b>	<b>8,402</b>	<b>3,766</b>	<b>4,679</b>	<b>5,525</b>	<b>5,438</b>	<b>5,259</b>	<b>5,971</b>	<b>6,897</b>	<b>9,046</b>	<b>7,452</b>	<b>6,808</b>	<b>5,632</b>	<b>5,214</b>	<b>5,134</b>	<b>5,545</b>	<b>6,981</b>	<b>5,649</b>	<b>4,863</b>	<b>2,829</b>	<b>2,325</b>	<b>2,279</b>	<b>2,641</b>	<b>3,747</b>	<b>4,143</b>	<b>3,494</b>	<b>4,273</b>	<b>133,992</b>

% Distribution:	1990	1991	1992	1993	1994	1995	1996	1997	1998	1999	2000	2001	2002	2003	2004	2005	2006	2007	2008	2009	2010	2011	2012	2013	2014	2015	1990-2015
	Pct.	Pct.	Pct.	Pct.	Pct.	Pct.	Pct.	Pct.	Pct.	Pct.	Pct.	Pct.	Pct.	Pct.	Pct.	Pct.	Pct.	Pct.	Pct.	Pct.	Pct.	Pct.	Pct.	Pct.	Pct.	Pct.	Pct.
Single Family	37.4%	65.0%	65.6%	64.2%	66.2%	66.2%	65.7%	64.4%	48.4%	57.5%	56.4%	64.1%	69.9%	71.1%	75.1%	79.9%	80.9%	80.2%	64.3%	79.6%	85.8%	68.2%	57.1%	46.1%	58.3%	53.1%	63.5%
Duplex	2.3%	3.9%	4.1%	3.6%	3.6%	3.3%	3.8%	6.5%	3.9%	2.4%	2.8%	2.8%	6.8%	6.0%	5.9%	3.2%	4.9%	4.4%	5.2%	4.8%	4.2%	2.0%	2.5%	2.0%	2.8%	1.7%	3.8%
Multi-family	50.2%	15.2%	18.1%	21.0%	19.2%	21.1%	23.9%	23.8%	42.7%	34.8%	36.7%	29.0%	20.0%	20.2%	15.9%	14.9%	12.1%	12.9%	27.7%	13.7%	8.4%	28.2%	39.4%	51.0%	38.1%	44.5%	27.5%
Mobile Home	10.0%	15.9%	12.2%	11.1%	11.0%	9.3%	6.6%	5.2%	5.0%	5.3%	4.2%	4.2%	3.3%	2.6%	3.2%	2.0%	2.1%	2.4%	2.8%	1.9%	1.6%	1.6%	1.0%	0.9%	0.8%	0.6%	5.2%
<b>TOTAL</b>	<b>100%</b>	<b>100%</b>	<b>100%</b>	<b>100%</b>	<b>100%</b>	<b>100%</b>	<b>100%</b>	<b>100%</b>	<b>100%</b>	<b>100%</b>	<b>100%</b>	<b>100%</b>	<b>100%</b>	<b>100%</b>	<b>100%</b>	<b>100%</b>	<b>100%</b>	<b>100%</b>	<b>100%</b>	<b>100%</b>	<b>100%</b>	<b>100%</b>	<b>100%</b>	<b>100%</b>	<b>100%</b>	<b>100%</b>	<b>100%</b>