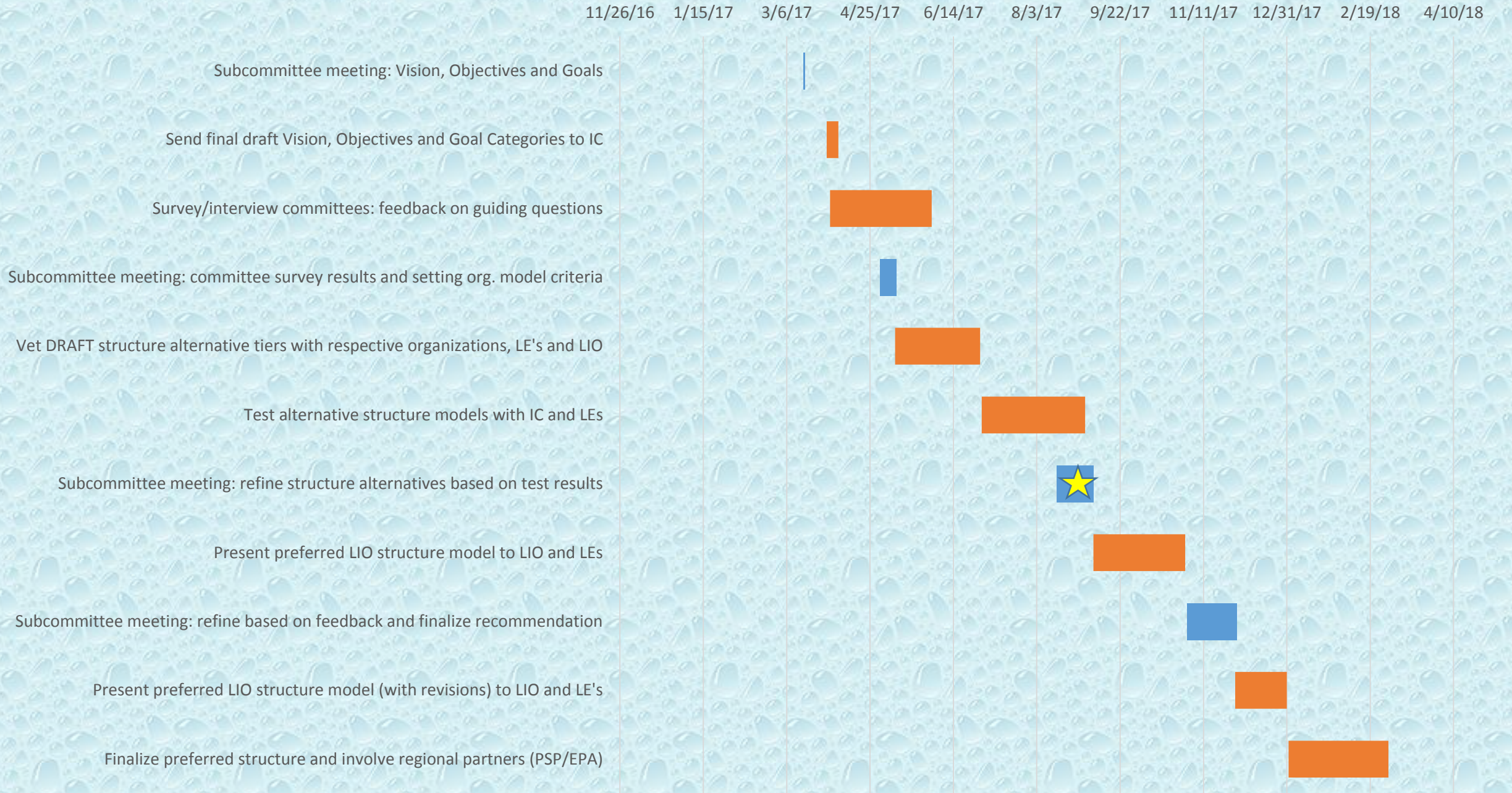


LIO Structure Subcommittee Meeting

08/31/2017





CRITERIA

- **EFFICIENCY**
 - *Commiserate level of input relative to anticipated outcomes/goals*
- **BROAD EXPERTISE**
 - *Ability to address any aspect of ecosystem recovery*
 - *Within LIO Plan and broader watershed planning processes/documents*
- **LEADERSHIP**
 - *Broadly involves and engages leadership (management and elected officials) at local level*
- **COLLABORATIVE IMPLEMENTATION**
 - *Regional and local feedback and support loops (State, Federal, and local)*
- **CONTINUITY**
 - *People and Spatial attributes: membership adaptable over time and independent of geographic boundaries*

Tiers denote a gradient of functionality. As we move down in tiers, we move further away from the criteria and other nuances like organizational history.

Tier 1

- ~~• Hybrid~~
- Revised Hybrid Approach
- ~~• Interim Approach~~
- Stillaguamish Combined LE/LIO; Snohomish LE/LIO Enhanced Integration

*Combined the Hybrid and Interim Approach models to form the Revised Hybrid model.

*Meets all of the criteria.

Tier 2

- ~~• Stillaguamish no LIO; Snohomish Combined LE/LIO~~
- ~~• WRIA-based~~

*No basin has suggested a “no LIO” model. Snohomish hasn’t asked to combine.

*WRIA-based meets the majority (three or more) of the criteria.

Tier 3

- ~~• Snohomish no LIO; Stilly Combined LE/LIO~~
- ~~• Snohomish Combined LE/LIO; Stilly Separate LE/LIO~~

*No basin has suggested these models and Stilly would prefer not to have separate LE and LIO.

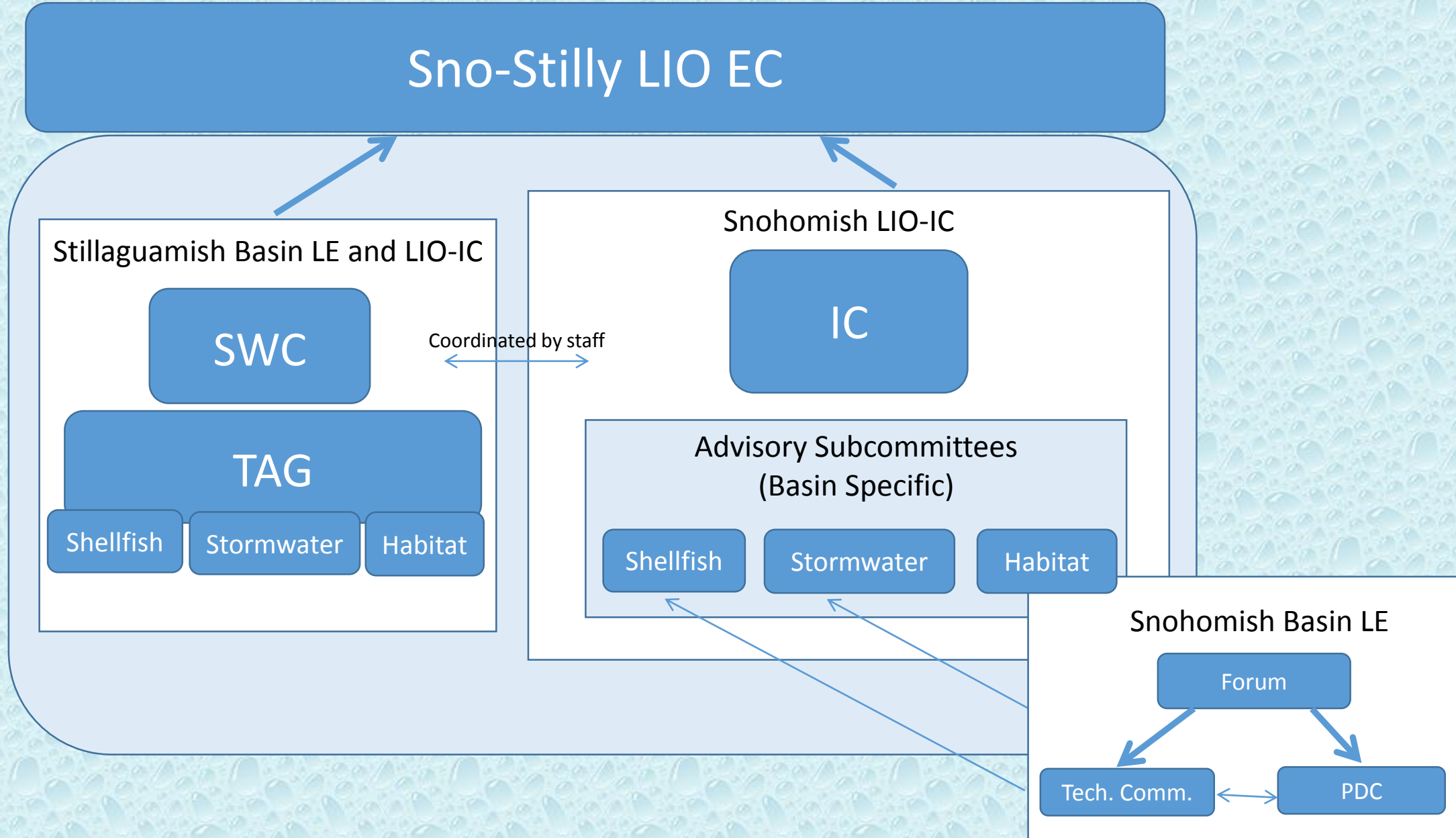
*Does not meet criteria (fewer than 3).

Tier 4

- ~~• Status Quo~~
- ~~• No LIOS~~

*The Status Quo worked for the initial planning phase of the LIO but now we’re in the implementation phase so we need new efficiencies to serve the new function. Current model is ineffective, does not meet criteria for efficiency, and is redundant.

Revised Hybrid Approach With EC



Revised Hybrid Approach with EC

This model maintains one LIO but has two, basin-specific Implementation Committees. It preserves cross-basin coordination within the EC and expands the implementation capacity/authority with the SWC being the Stillaguamish IC. Under this model, the EC would function as the primary decision-making body for recovery aspects outside the salmon recovery purview. The SWC would take on a central role as the Stillaguamish IC and coordinating directly with the Snohomish IC. Salmon project decisions would remain with the SWC and Forum.

Improved Efficiencies

- EC accelerates decision-making
- Reduction/elimination in meeting redundancy for the Stillaguamish
- Supports cross-basin integration
- Supports basin specific work groups
- Combines resources
- Reduction in IC and EC meeting frequency

Considerations

- Specific issues with the EC work on beyond “rubber stamp”
- Revisit Snohomish LIO IC, combined EC, and SWC Committee membership
- No committees are removed
- Potential meeting redundancy in Snohomish basin

Group Functions

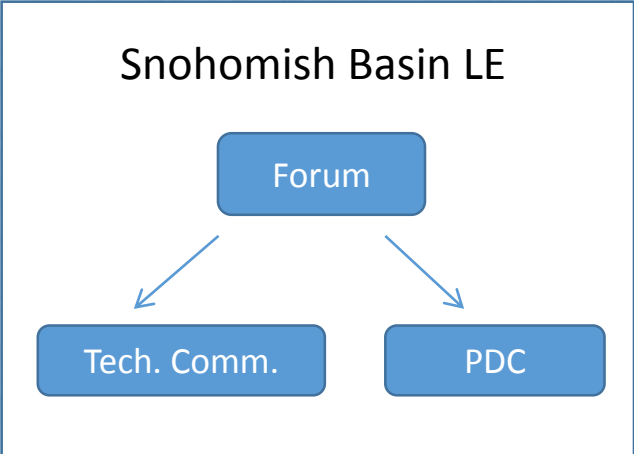
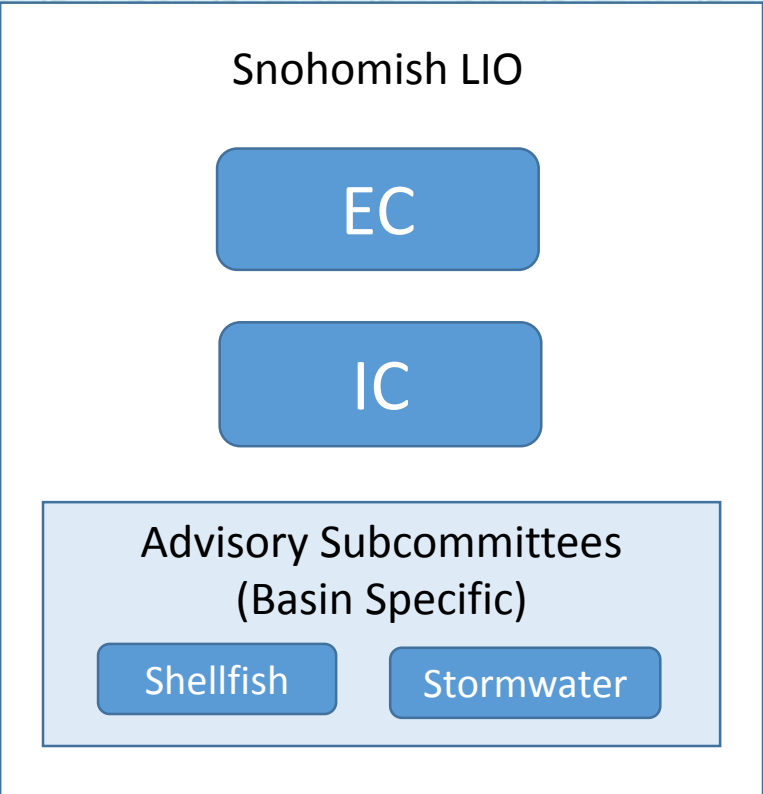
- Facilitate NTA development and review process locally (**Snohomish and SWC IC**)
- Provides input into regional priority development process (**Snohomish and SWC IC**)
- Provides input into Action Agenda implementation as well as implementation of the NEP funding model (as it relates to the LIO Ecosystem Recovery Plan-same)
- Assist with adaptive management of LIO Plan and filling gaps in local recovery goal setting (**Snohomish and SWC IC**)

Stillaguamish LIO & Snohomish LE/LIO Enhanced Integration

Stillaguamish



Snohomish



Stillaguamish LIO & Snohomish Enhanced Integration

Under this model, the Stillaguamish basin would absorb the LIO functions into the Lead Entity. The Snohomish basin would keep the existing Lead Entity and LIO structure, with reductions in meeting frequencies between the Snohomish LIO Committees and establishing more workgroups. The TAG may be expanded with additional stormwater and/or shellfish expertise (as needed), and the Forum and committees would work with the Snohomish LIO to ensure that the LIO Recovery Plan and associated projects continue to be well aligned with salmon recovery priorities.

Increased Efficiencies

- Allows for watershed-based prioritization
- Maintains watershed focus
- Could provide opportunities for more focused recovery-based discussions
- Reduction in IC and EC meeting frequency

Considerations

- Potential loss of opportunity for cross-basin integration
- Competition/project funding (i.e. \$100,000 allocation)
- Potential lack of regional influence
- Meeting redundancy
- Capacity (facilitation)
- No formal way to recognize additional LIOs

Group Functions

- Facilitate NTA development and review process locally **(SWC & Snohomish LIO)**
 - Snohomish Lead Entity reviews salmon related NTAs
- Direct \$100,000 local NEP allocation across both basins
- Include broader expertise if Stormwater or Shellfish perspective absent from existing group **(SWC)**
- Provide input into regional priority setting process **(SWC and Snohomish LIO)**
- Provide input into Action Agenda implementation as well as implementation of the NEP funding model (as it relates to the LIO Ecosystem Recovery Plan) **(SWC and Snohomish LIO)**
- Assist with adaptive management of LIO Plan and filling gaps in local recovery goal setting **(SWC and Snohomish LIO)**
- Continued implementation of LE functions
 - SRFB/PSAR list
 - Adaptive management of salmon recovery plans

Stillaguamish LIO & Cross Basin Coordination Mechanism

Stillaguamish

Snohomish

Stillaguamish Basin LE-LIO

SWC

TAG

Cross-Basin
Coordination Group

Snohomish LIO

IC

Advisory Subcommittees
(Basin Specific)

Shellfish

Stormwater

Snohomish Basin LE

Forum

Tech. Comm.

PDC

Stillaguamish LIO & Cross Basin Coordination

Under this model, the Stillaguamish basin would absorb the LIO functions into the Lead Entity. The Snohomish basin would keep the existing Lead Entity structure. A Cross Basin Coordination Group would be established in place of the EC. The TAG may be expanded with additional stormwater and/or shellfish expertise (as needed), and the Forum and committees would work with the Snohomish LIO to ensure that the LIO Recovery Plan and associated projects continue to be well aligned with salmon recovery priorities.

Increased Efficiencies

- Allows for watershed-based prioritization
- Maintains watershed focus
- Could provide opportunities for broader recovery-based discussions
- Reduction in IC meeting frequency
- Establishment of a cross-basin coordination group to work on cross-basin issues

Considerations

- Eliminates the LIO EC
- Competition/project funding (i.e. \$100,000 allocation)
- Potential lack of regional influence b/c of split
- Meeting redundancy
- Capacity (facilitation)
- Membership and function of cross-basin coordination group

Group Functions

- Facilitate NTA development and review process locally **(SWC & Snohomish LIO)**
 - Snohomish Lead Entity reviews salmon related NTAs
- Direct \$100,000 local NEP allocation across both basins
- Include broader expertise if Stormwater or Shellfish perspective absent from existing group **(SWC)**
- Provide input into regional priority setting process **(SWC and Snohomish LIO)**
- Provide input into Action Agenda implementation as well as implementation of the NEP funding model (as it relates to the LIO Ecosystem Recovery Plan) **(SWC and Snohomish LIO)**
- Assist with adaptive management of LIO Plan and filling gaps in local recovery goal setting **(SWC and Snohomish LIO)**
- Continued implementation of LE functions
 - SRFB/PSAR list
 - Adaptive management of salmon recovery plans