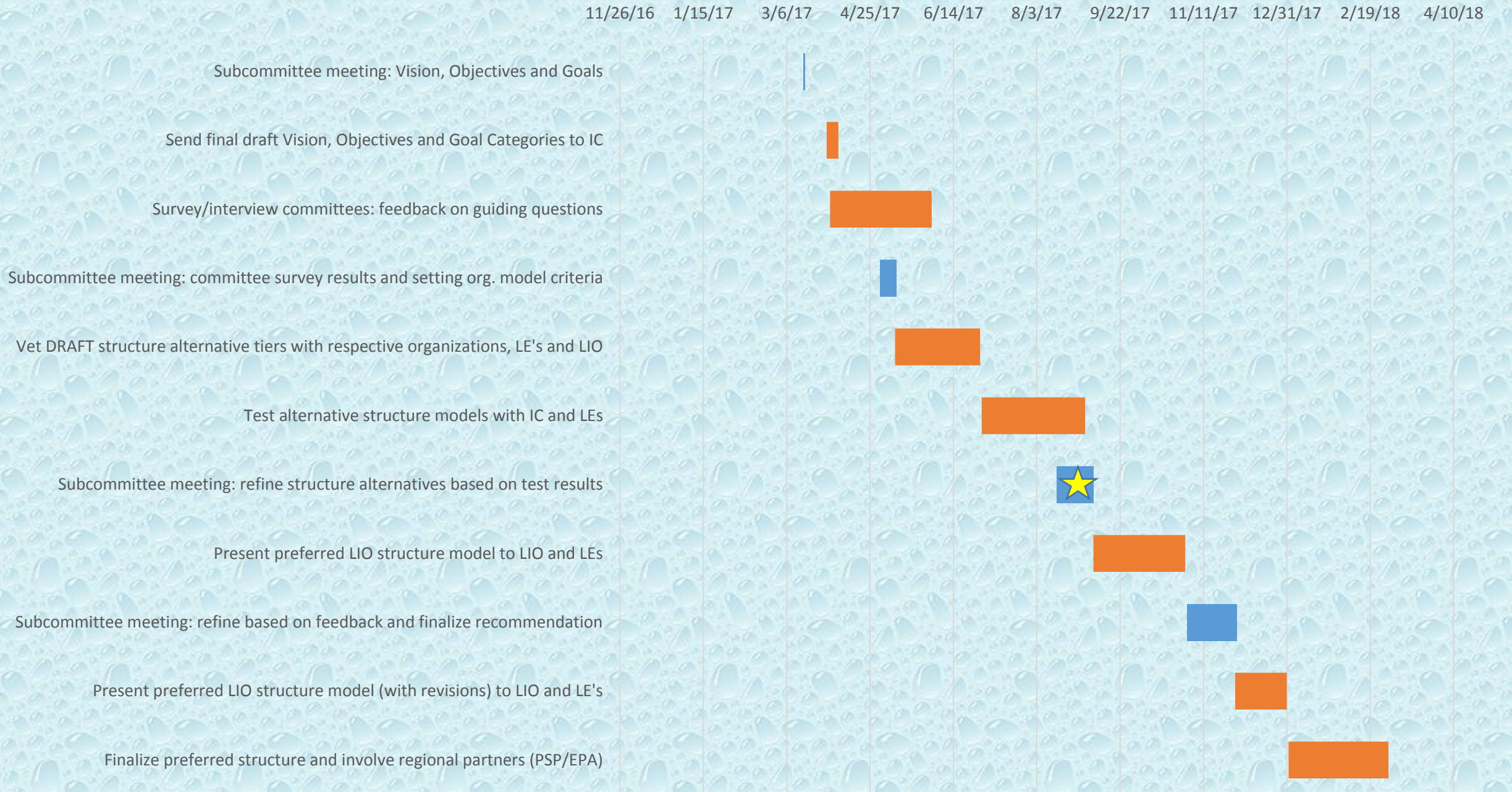


LIO Structure Subcommittee Meeting

08/31/2017





CRITERIA

- **EFFICIENCY**
 - *Commiserate level of input relative to anticipated outcomes/goals*
- **BROAD EXPERTISE**
 - *Ability to address any aspect of ecosystem recovery*
 - *Within LIO Plan and broader watershed planning processes/documents*
- **LEADERSHIP**
 - *Broadly involves and engages leadership (management and elected officials) at local level*
- **COLLABORATIVE IMPLEMENTATION**
 - *Regional and local feedback and support loops (State, Federal, and local)*
- **CONTINUITY**
 - *People and Spatial attributes: membership adaptable over time and independent of geographic boundaries*

Tiers denote a gradient of functionality. As we move down in tiers, we move further away from the criteria and other nuances like organizational history.

Tier 1

- ~~Hybrid~~
- Revised Hybrid Approach
- ~~Interim Approach~~
- Stillaguamish Combined LE/LIO; Snohomish Separate LE/LIO

***Combined the Hybrid and Interim Approach models to form the Revised Hybrid model.**

***Meets all of the criteria.**

Tier 2

- ~~Stillaguamish no LIO; Snohomish Combined LE/LIO~~
- WRIA-based

***No basin has suggested a “no LIO” model. Snohomish hasn’t asked to combine.**

***WRIA-based meets the majority (three or more) of the criteria.**

Tier 3

- ~~Snohomish no LIO; Stilly Combined LE/LIO~~
- ~~Snohomish Combined LE/LIO; Stilly Separate LE/LIO~~

***No basin has suggested these models and Stilly would prefer not to have separate LE and LIO.**

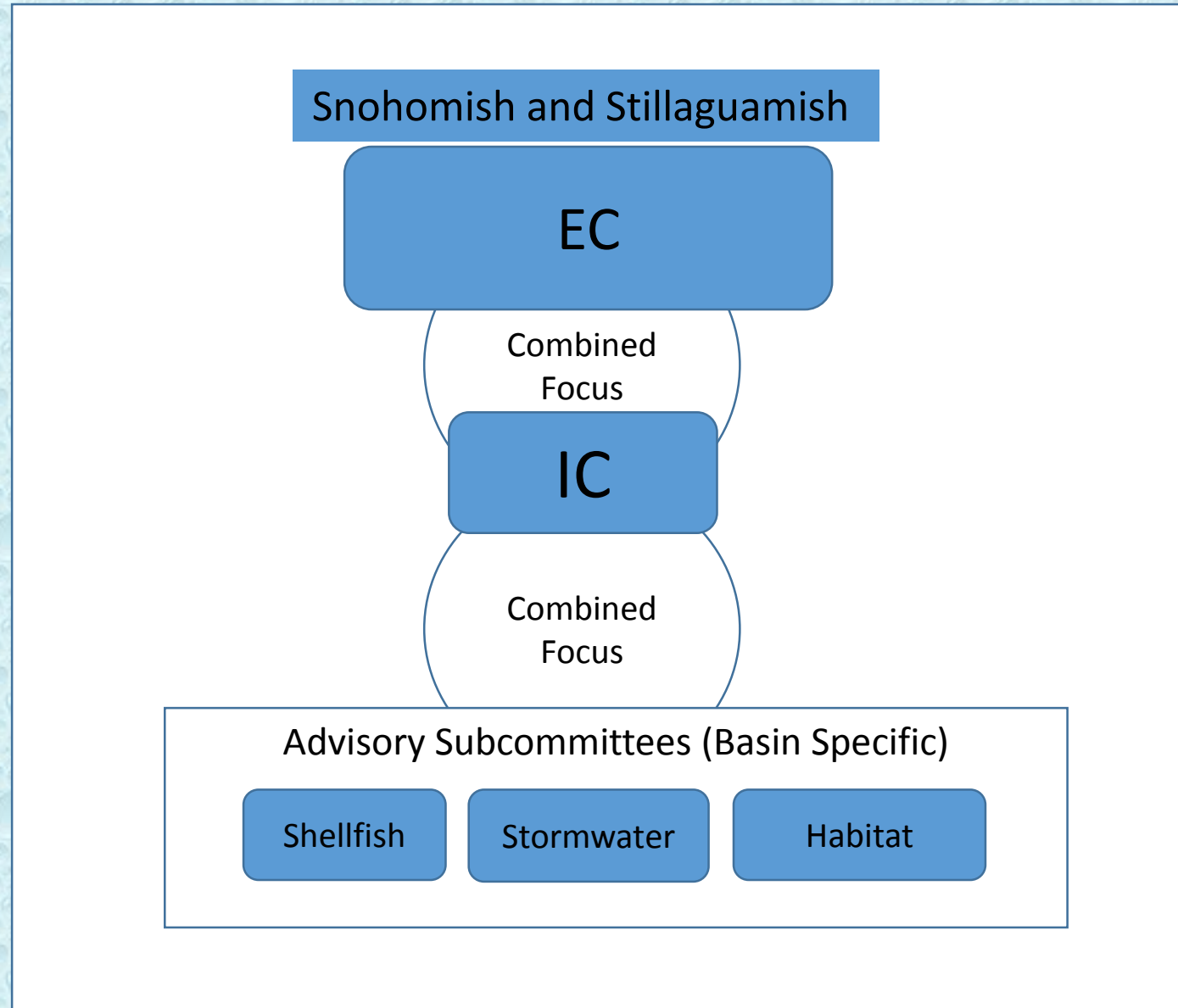
***Does not meet criteria (fewer than 3).**

Tier 4

- ~~Status Quo~~
- ~~No LIOS~~

***The Status Quo worked for the initial planning phase of the LIO but now we’re in the implementation phase so we need new efficiencies to serve the new function. Current model is ineffective, does not meet criteria for effectiveness, and is redundant.**

Revised Hybrid Approach Proposal



Revised Hybrid Approach Proposal

This model is a combination of elements from the Interim model and the Hybrid model. Allows for Basin / topic-specific conversations to take place; preserves cross-basin coordination and decision making authority. Under this model, the EC would function as the primary decision-making body for recovery aspects outside the salmon recovery purview. Salmon project decisions would remain with the SWC and Forum.

Improved Efficiencies

- EC accelerates decision-making outside of salmon recovery
- No committees are removed; WRIA based subcommittees remain
- Supports cross-basin integration
- Supports basin specific work groups
- Combines resources

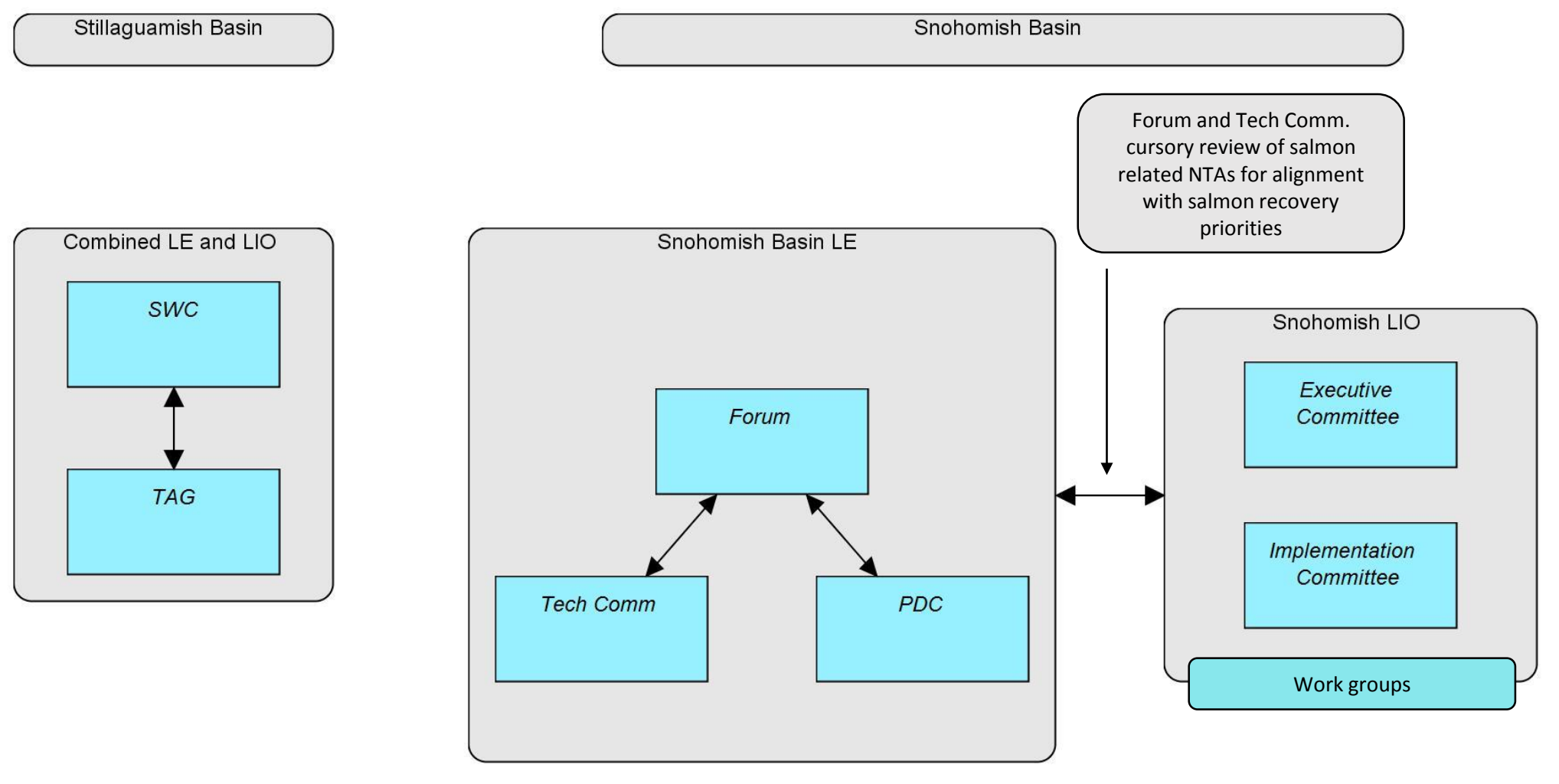
Considerations

- Structure and strategies not in alignment
- Potential to increase capacity needs
- Requires revisiting the structure for all committees

Group Functions

- IC facilitates NTA development and review process locally
- Provides input into regional priority development process
- Provides input into Action Agenda implementation as well as implementation of the NEP funding model (as it relates to the LIO Ecosystem Recovery Plan)
- Assist with adaptive management of LIO Plan and filling gaps in local recovery goal setting

Stillaguamish LIO-Snohomish Enhanced Integration



Stillaguamish LIO-Snohomish Enhanced Integration

Under this model, the Stillaguamish basin would absorb the LIO functions into the Lead Entity. The Snohomish basin would keep the existing Lead Entity and LIO structure. The TAG may be expanded with additional stormwater and/or shellfish expertise (as needed), and the Forum and committees would work with the Snohomish LIO to ensure that the LIO Recovery Plan and associated projects continue to be well aligned with salmon recovery priorities.

Increased Efficiencies

- Allows for watershed-based prioritization
- Maintains watershed focus
- Could provide opportunities for broader recovery-based discussions

Considerations

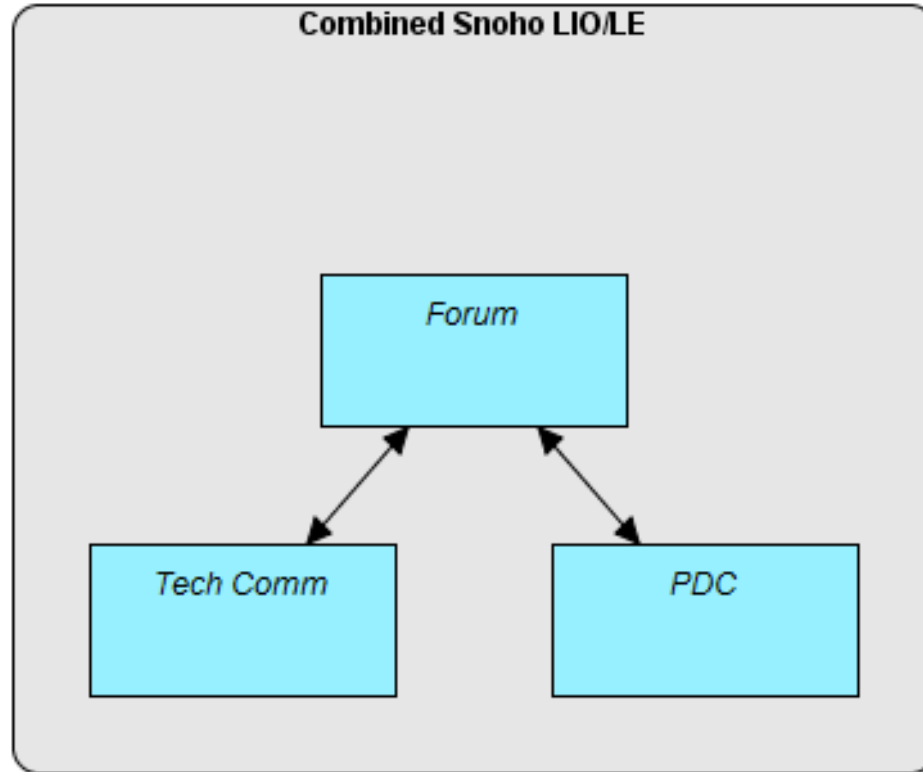
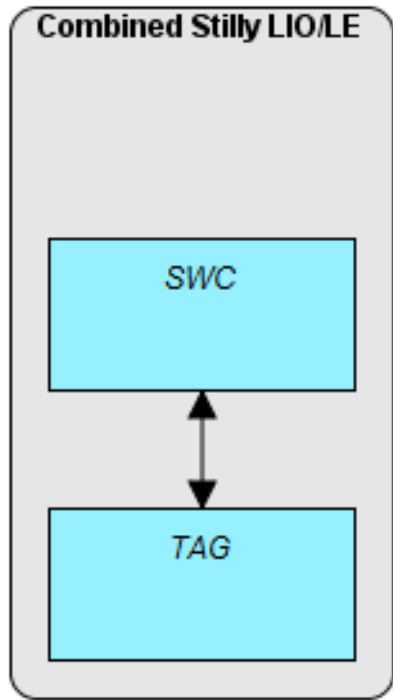
- Potential loss of opportunity for cross-basin integration
- Competition/project funding
- Potential lack of regional influence
- Meeting redundancy
- Capacity (facilitation)
- Allows Stillaguamish to proceed with preferred alternative while Snohomish considers preferred structure on a longer timeline.

Group Functions

- Facilitate NTA development and review process locally **(SWC & Snohomish LIO)**
 - Snohomish Lead Entity reviews salmon related NTAs
- Direct \$100,000 local NEP allocation across both basins
- Include broader expertise if Stormwater or Shellfish perspective absent from existing group **(SWC)**
- Provide input into regional priority setting process **(SWC and Snohomish LIO)**
- Provide input into Action Agenda implementation as well as implementation of the NEP funding model (as it relates to the LIO Ecosystem Recovery Plan) **(SWC and Snohomish LIO)**
- Assist with adaptive management of LIO Plan and filling gaps in local recovery goal setting **(SWC and Snohomish LIO)**
- Continued implementation of LE functions
 - SRFB/PSAR list
 - Adaptive management of salmon recovery plans

WRIA Based

Separate by Watershed-IC and EC Absorbed into Existing LE



WRIA Based

This model would combine the Lead Entity structure with the LIO. Therefore, the LIO would be separated by watershed boundary. There would be no more Implementation or Executive Committees as those would be absorbed into the existing LE structure.

Increased Efficiencies

- Less topical redundancy
- Improved coordination within a watershed (i.e. multi-benefit)
- Expansion of WRIA roles and influence
- WRIA autonomy

Considerations

- Larger group with focus on broader suite of restoration metrics, and targets
- Potential to dilute focus on salmon recovery
- Lack of expert knowledge related to the other strategic initiatives
- Potential capacity issues for LE to absorb LIO responsibilities
- Lack of regional integration

Group Functions

- Include broader expertise if Stormwater or Shellfish perspective absent from existing group **(SWC & Forum)**
- WRIA based groups facilitate NTA development and review process locally **(SWC & Forum)**
- Provide input into regional priority setting process **(SWC & Forum)**
- Provide input into Action Agenda implementation as well as implementation of the NEP funding model (as it relates to the LIO Ecosystem Recovery Plan) **(SWC & Forum)**
- Assist with adaptive management of LIO Plan and filling gaps in local recovery goal setting **(SWC & Forum)**
- Continued implementation of LE functions
 - SRFB/PSAR list
 - Adaptive management of salmon recovery plans