

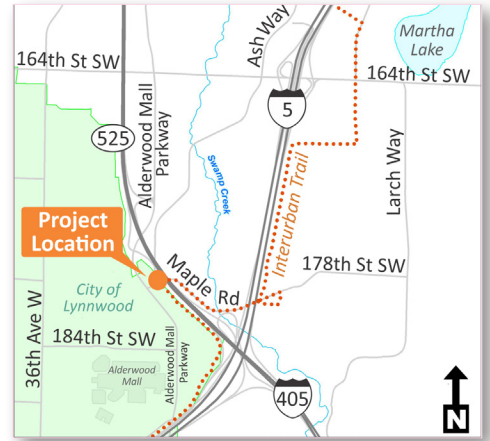
# Maple Rd and Ash Way | Comment Sheet

Open House | March 15, 2018 | 5:30 - 7:30 p.m. | Lynnwood City Hall

Thank you for joining us at this open house for the Maple Rd and Ash Way Intersection and Drainage Improvements project. Please share your comments with staff on this comment form.

What is your interest in the project?

- I live in the area.
- I use the intersection on my commute.
- I work in the area.
- I am a business owner in the area.
- Other \_\_\_\_\_



Snohomish County and the city of Lynnwood are interested in what you have to say. Fill out the section below with your thoughts and concerns about the project.

---

---

---

---

---

---

---

---

---

---

---

---

---

---

---

---

---

---

---

---

---

---

---

---

Did you receive answers to all of your questions?  Yes  No

## For more info . . .

- Visit [www.snohomishcountywa.gov/3677](http://www.snohomishcountywa.gov/3677). Sign up online to receive project updates.
- Questions? Contact Snohomish County project manager David Lee at [david.lee@snoco.org](mailto:david.lee@snoco.org), or city of Lynnwood project manager Robert Victor at [rvictor@lynnwoodwa.gov](mailto:rvictor@lynnwoodwa.gov).



Please place your comments in the comment box or mail them by March 22 to: Matt Phelps, Communications, Snohomish County Public Works, 3000 Rockefeller Ave., M/S 607, Everett, WA 98201. You may also email comments to [matt.phelps@snoco.org](mailto:matt.phelps@snoco.org).