

# Broadway Avenue SE

YOU ARE INVITED

## SHOULDER WIDENING

**Open house**  
**6 to 8 p.m.**  
**Tuesday, March 19**

Cathcart Elementary  
 8201-188th Street SE  
 Snohomish

Join us anytime between 6 and 8 pm to visit with staff, view displays and provide your comments on the planned improvements.

*Interpreter and translation services for non-English speakers and accommodations for persons with disabilities are available upon request. Please make arrangements in advance by contacting:*

Bronlea Mishler  
 425-388-6475 (TTY: 711)  
 bronlea.mishler@snoco.org

### More details

Visit [www.snoco.org](http://www.snoco.org) and search "Broadway Avenue"



Sign up on the project website to receive emails about design and construction progress.

### Questions?

Contact Bronlea Mishler, Public Works communications, 425-388-6475 (TTY: 711); bronlea.mishler@snoco.org.

This paper is recycled & recyclable. (DH)

Snohomish County Public Works plans to build an 8-foot-wide paved shoulder on the west side of Broadway Avenue between Yew Way and 164th Street SE. Drivers and nearby residents are invited to learn more about the project at an open house from 6 to 8 p.m. Tuesday, March 19, at Cathcart Elementary.

This nearly three-mile stretch of Broadway Avenue currently has 10-foot-wide travel lanes and no shoulders, and the posted speed is 35 mph. This project is one of several projects funded by construction of the Brightwater Wastewater Treatment Plant.

A 5-foot-wide shoulder could be constructed on the east side of Broadway, from Yew Way to 164th Street SE, if the county can secure additional funding.

### Project benefits

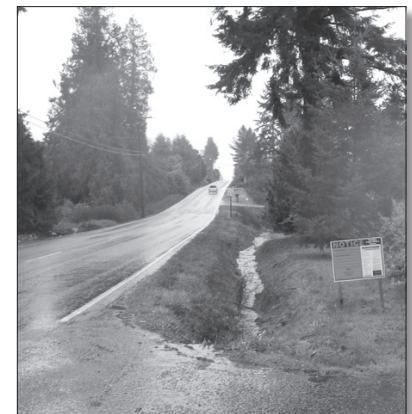
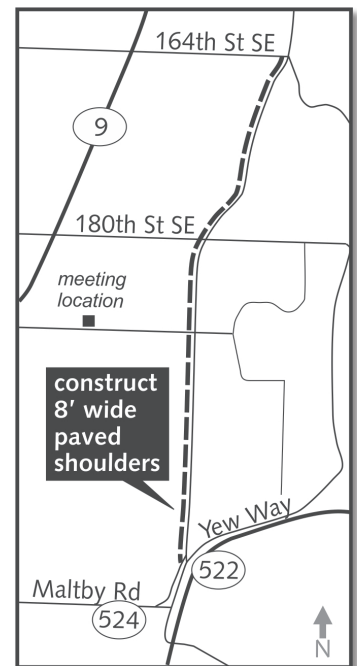
Wider shoulders will make it easier for pedestrians and cyclists to commute without competing for space with the approximately 5,300 vehicles that drive this stretch of Broadway daily. These improvements should help reduce the risk of collisions along the route. Additional retaining walls and stormwater retention ponds will improve drainage and help clean water entering local lakes and streams.

### Construction schedule

Right-of-way acquisition will begin in late spring 2013 and continue through the fall. We expect to advertise the project for competitive bid in March 2014, and begin construction that summer. Construction is expected to last through fall 2015. Drivers and pedestrians can expect daytime single-lane closures on weekdays during construction work. Once we award the construction contract, we'll post schedule details on the project website.

### Funding

The project is funded by King County and managed by Snohomish County as part of an agreement related to construction of the Brightwater Wastewater Treatment Plant. Construction is expected to cost \$3.8 million.





**Snohomish County**

---

**Public Works**

*Communications*

3000 Rockefeller, M/S 607  
Everett, WA 98201

Broadway Avenue SE  
Open house March 19