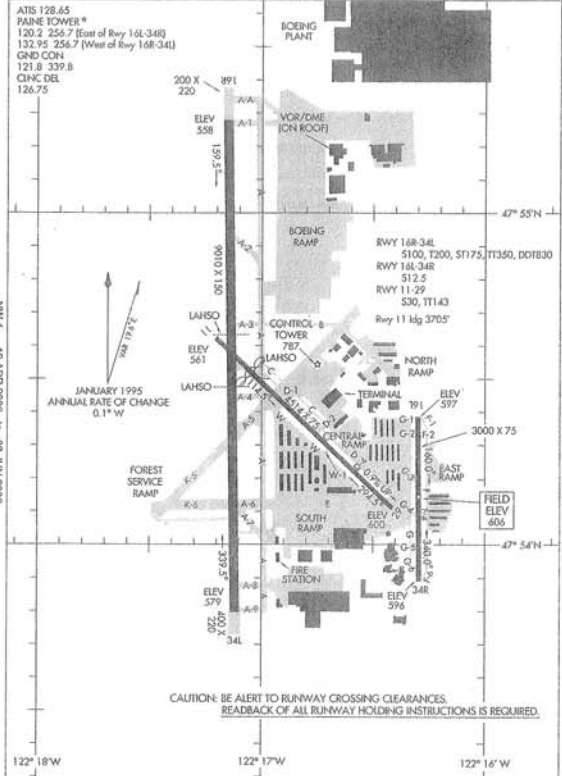


06103
AIRPORT DIAGRAM
 EVERETT/SNOHOMISH COUNTY (PAINE FIELD) (P.A.E.)
 AL-142 (FAA)
 EVERETT, WASHINGTON



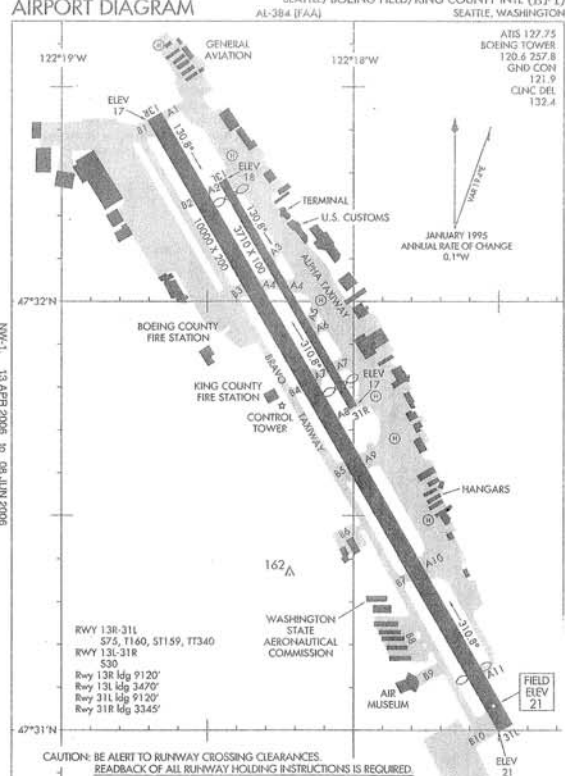
AIRPORT DIAGRAM
 06103
 EVERETT/SNOHOMISH COUNTY (PAINE FIELD) (P.A.E.)
 EVERETT, WASHINGTON

177

Airport Operational Statistics

Aircraft based on the field: 576	Aircraft operations: avg 350/day
Single engine airplanes: 484	48% local general aviation
Multi engine airplanes: 69	47% transient general aviation
Jet airplanes: 18	3% air taxi
Helicopters: 4	2% commercial
Gliders airplanes: 1	<1% military

06047
AIRPORT DIAGRAM
 SEATTLE/BOEING FIELD/KING COUNTY INTL (B.F.T.)
 AL-384 (FAA)
 SEATTLE, WASHINGTON



AIRPORT DIAGRAM
 06047
 SEATTLE/BOEING FIELD/KING COUNTY INTL (B.F.T.)
 SEATTLE, WASHINGTON

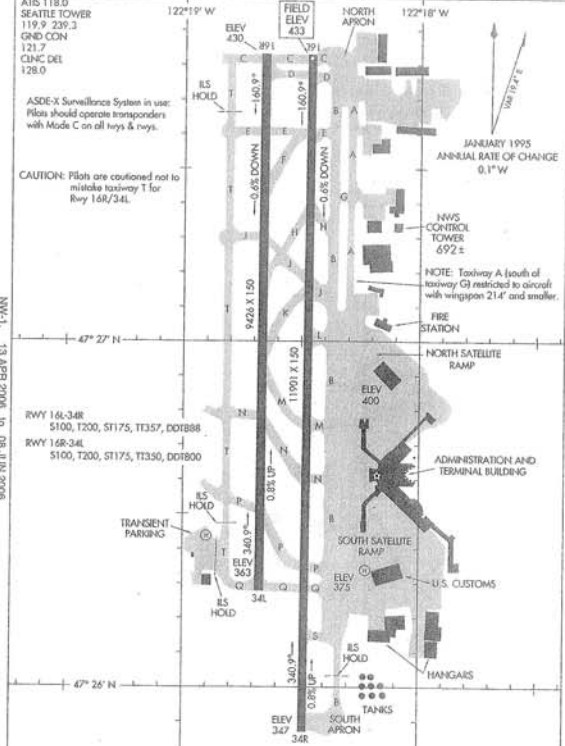
06047

Airport Operational Statistics

Aircraft based on the field: 501	Aircraft operations: avg 823/day
Single engine airplanes: 314	45% transient general aviation
Multi engine airplanes: 57	30% local general aviation
Jet airplanes: 76	21% air taxi
Helicopters: 36	3% commercial
Military aircraft: 18	<1% military

<http://www.airnav.com/airport/K.B.F.T>

06103
AIRPORT DIAGRAM
 SEATTLE-TACOMA INTL (SEA)
 AL-582 (FAA)
 SEATTLE, WASHINGTON



AIRPORT DIAGRAM
 06103
 SEATTLE-TACOMA INTL (SEA)
 SEATTLE, WASHINGTON

06103

Airport Operational Statistics

Aircraft based on the field: 12	Aircraft operations: avg 971/day
Single engine airplanes: 6	59% commercial
Multi engine airplanes: 2	40% air taxi
Jet airplanes: 3	1% transient general aviation
Helicopters: 1	<1% military
	<1% local general aviation

Airport Comparison

	PAE	BFI	SEA
Size (acres)	1284	594	2,600
Runways #	3	2	2
<i>length (feet)</i>	9,010	10,000	11,901
	4,504	3,710	9,426
	3,000		
2005 Operations	152,901	305,000	341,470