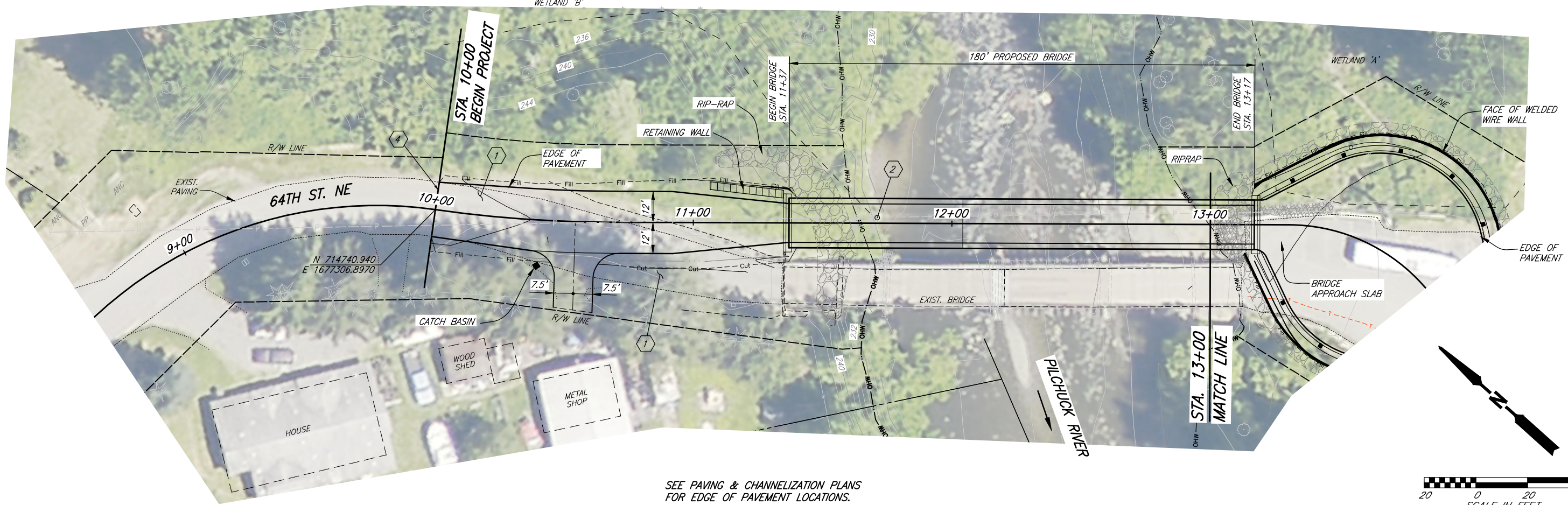
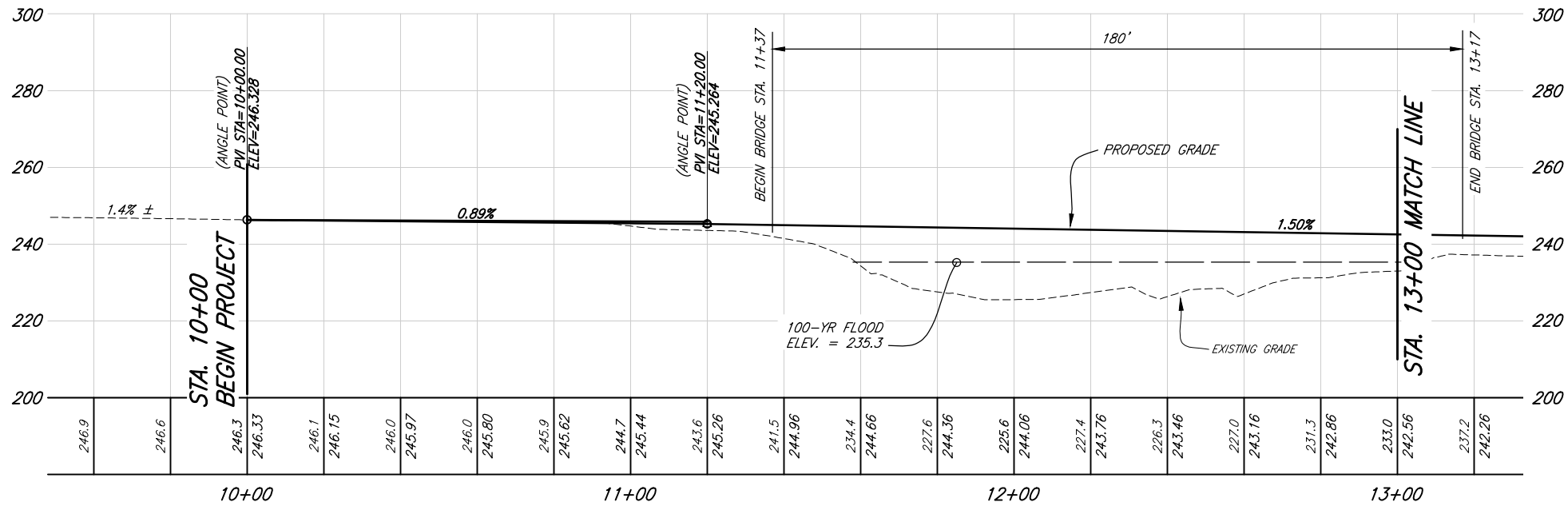


SW 1/4, SECT. 27, T.30 N., R.06 E., W.M.



SEE PAVING & CHANNELIZATION PLANS FOR EDGE OF PAVEMENT LOCATIONS.



SCALE: 1" = 20' Horiz. & Vert.

CONSTRUCTION NOTES:

- ① REMOVE EXISTING PAVEMENT, STA. 10+00 TO 15+00.
- ② POWER TO BE RELOCATED BY OTHERS PRIOR TO CONSTRUCTION.
- ③ REMOVE EXISTING SIGNS. SIGNS SHALL BE SALVAGED WITHOUT POSTS AND GIVEN TO THE PROJECT ENGINEER. NO PARKING AND TOWING SIGNS SHALL BE REMOVED WHEN CONSTRUCTION COMMENCES. LOAD LIMIT, BRIDGE SIGN AND OBJECT MARKER SIGN SHALL REMAIN IN PLACE UNTIL TRAFFIC IS MOVED TO THE NEW BRIDGE.
- ④ SAWCUT EXISTING PAVEMENT FOR ASPHALT REMOVAL.

NOTE:

ENTIRE PROJECT IS WITHIN A FISH AND WILDLIFE HABITAT CONSERVATION AREA.

Plotted: Dec 30, 2014 - 2:44pm

PLAN CHECK	BY	DATE	NO.	REVISION	BY

Last Saved By: spwrtr Jul 25, 2014 - 12:24pm			
REGION NO.	STATE	FED. AID PROJ. NO.	SURVEY NO.
10	WASH.	BROS-2031(109)	4297
DESIGNED BY: J.WEELBORG, L.GIRVEN		DRAWN BY: SJT, RTR	
FIELD BOOK(S):		UPI# 11-0001-1	

PRELIMINARY

SNOHOMISH COUNTY
DEPARTMENT OF
PUBLIC WORKS

FUNDING NO. RC1630

PILCHUCK RIVER BRIDGE #581
BRIDGE REPLACEMENT

PLAN & PROFILE

REFERENCE SHEET NO.	PP01
SHEET	C09
OF	17
SHEETS	