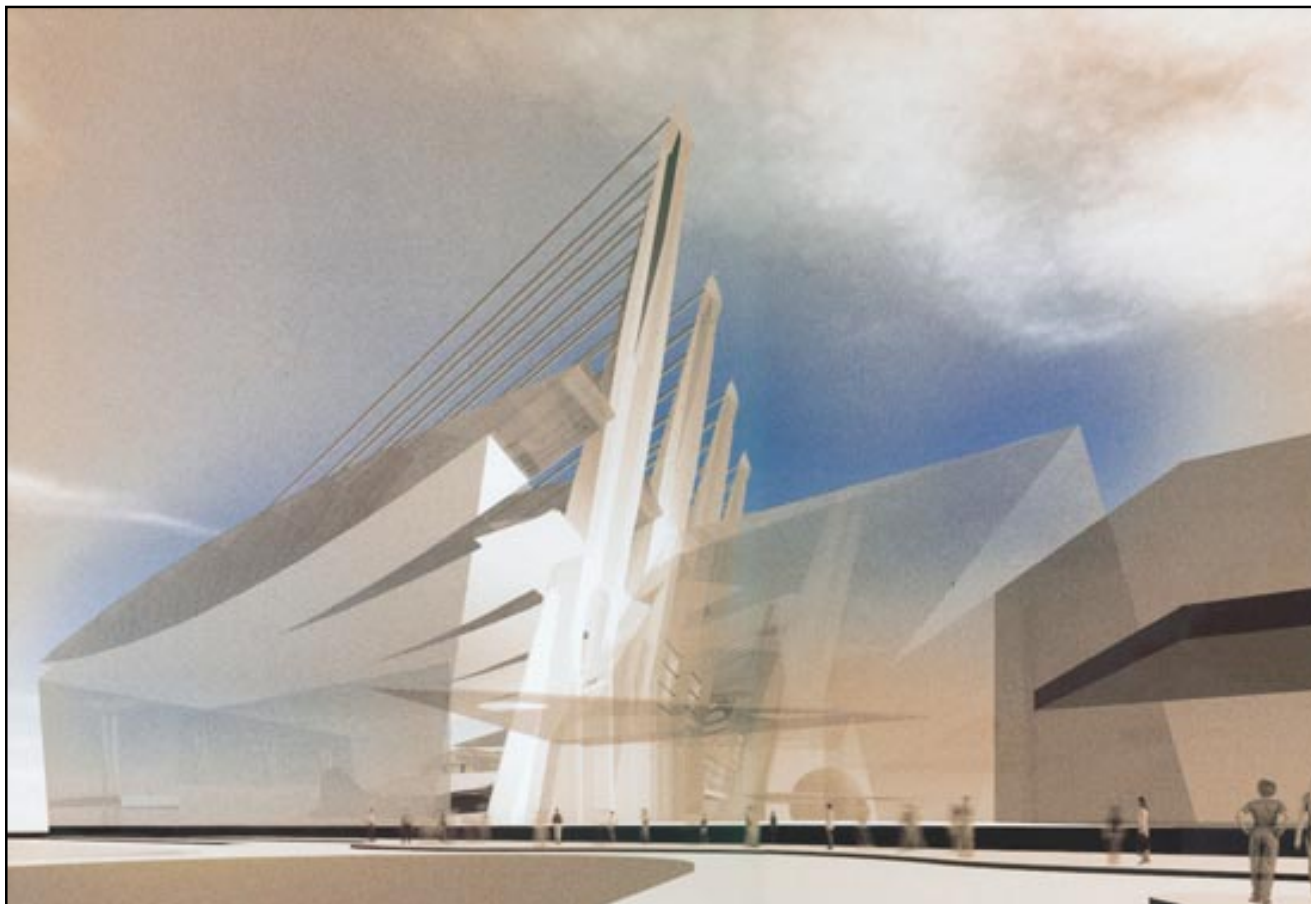


**Snohomish County  
Public Facilities District  
National Flight Interpretive Center**



**Artist's rendition of the proposed National Flight Interpretive Center**

---

**Project Description:**

The Museum of Flight project is a proposal to construct and operate a 58,000 square foot facility consisting of aircraft exhibit space, an education center, aircraft restoration space, meeting rooms, food service, gift shop, and relocated Boeing Tour Center.

The preliminary project budget for this proposal is \$22 million.

---

Project Status:

At its December 20, 2002 meeting the Snohomish County Public Facilities District found the project to be "contingently viable."

This means that, as presently configured, the Board felt the project is not financially viable. However, with additional time and scoping, the Board felt this project could become viable, and become a strong community asset.

Project proponents have until March 31, 2003 to satisfy five project contingencies.