

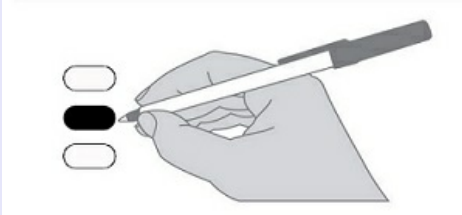
# Official Primary Sample/Provisional Ballot

August 4, 2020

Snohomish County, Washington

## Instructions

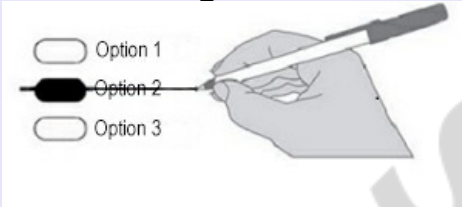
### How to vote



Fill in the oval next to your choice.  
Use blue or black ink.  
Do not use felt pen.

Voting more than once per question or race will cancel that vote.

### How to change a vote



Draw a line through the entire incorrect name or choice.

You may then make another selection.

### How to vote for a person not on the ballot



Write the name of the person in the space provided at the end of the race and fill in the oval.

**Note:** Office of President/Vice President will appear on the November General Election ballot.

For a list of the people and organizations that donated to state and local candidates and ballot measure campaigns, visit [www.pdc.wa.gov](http://www.pdc.wa.gov).

## Start voting here.

### Partisan Office Information

**READ:** Each candidate for partisan office may state a political party that he or she prefers. A candidate's preference does not imply that the candidate is nominated or endorsed by the party, or that the party approves of or associates with that candidate.

### Federal Partisan Office

#### Congressional District 1 U.S. Representative

Regular 2 year term - Vote for 1

- Suzan DelBene (Prefers Democratic Party)
- Steven Skelton (Prefers Libertarian Party)
- Robert Dean Mair (States No Party Preference)
- Matthew Heines (States No Party Preference)
- Justin Smoak (States No Party Preference)
- Derek Chartrand (Prefers GOP Party)
- Jeffrey Beeler, Sr. (Prefers Republican Party)

Write-In \_\_\_\_\_

#### Congressional District 2 U.S. Representative

Regular 2 year term - Vote for 1

- Timothy S. Hazelo (Prefers Republican Party)
- Tim Uy (Prefers Trump Republican Party)
- Kari Ilonummi (Prefers Republican Party)
- Rick Larsen (Prefers Democratic Party)
- James Dean Golder (Prefers Republican Party)
- Carrie R. Kennedy (Prefers Republican Party)
- Cody Hart (Prefers Republican Party)
- Jason Call (Prefers Democratic Party)

Write-In \_\_\_\_\_

#### Congressional District 7 U.S. Representative

Regular 2 year term - Vote for 1

- Scott Sutherland (Prefers Republican Party)
- Jack Hughes-Hageman (Prefers Democratic Party)
- Pramila Jayapal (Prefers Democratic Party)
- Rick Lewis (Prefers Independent Party)
- Craig Keller (Prefers Republican Party)

Write-In \_\_\_\_\_

## State Partisan Office

### Governor

Regular 4 year term - Vote for 1

- Alex Tsimerman (Prefers StandupAmerica Party)
- Phil Fortunato (Prefers Republican Party)
- Ryan Ryals (Prefers Unaffiliated Party)
- Leon Aaron Lawson (Prefers Trump Republican Party)
- Henry Clay Dennison (Prefers Socialist Workers Party)
- Tim Eyman (Prefers Republican Party)
- Liz Hallock (Prefers Green Party)
- Goodspaceguy (Prefers Trump Republican Party)
- Omari Tahir Garrett (Prefers Democrat Party)
- Don L. Rivers (Prefers Democratic Party)
- Martin L. 'Iceman' Wheeler (Prefers Republican Party)
- Raul Garcia (Prefers Republican Party)
- Tylor Grow (Prefers Republican Party)
- Winston Wilkes (Prefers Propertarianist Party)
- Brian R. Weed (States No Party Preference)
- Thor Amundson (Prefers Independent Party)
- Gene Hart (Prefers Democratic Party)
- William (Bill) Miller (Prefers American Patriot Party)
- Matthew Murray (Prefers Republican Party)
- Dylan B. Nails (Prefers Independent Party)
- Cameron M. Vessey (States No Party Preference)
- David W. Blomstrom (Prefers Fifth Republic Party)
- Anton Sakharov (Prefers Trump Republican Party)
- Craig Campbell (States No Party Preference)
- Nate Herzog (Prefers Pre2016 Republican Party)
- Cregan M. Newhouse (States No Party Preference)
- Ian Gonzales (Prefers Republican Party)
- Cairo D'Almeida (Prefers Democratic Party)
- Elaina J. Gonzalez (Prefers Independent Party)
- Jay Inslee (Prefers Democratic Party)
- Joshua Freed (Prefers Republican Party)
- David Voltz (Prefers Cascadia Labour Party)
- Joshua Wolf (Prefers New-Liberty Party)
- Loren Culp (Prefers Republican Party)
- Richard L. Carpenter (Prefers Republican Party)
- Bill Hirt (Prefers Republican Party)

Write-In \_\_\_\_\_

Official Primary Sample/Provisional Ballot

August 4, 2020

Snohomish County, Washington

State Partisan Office

- Lt. Governor Regular 4 year term - Vote for 1
Joseph Brumbles (Prefers Republican Party)
Jared Frerichs (Prefers Libertarian Party)
Ann Davison Sattler (Prefers Republican Party)
James R. Rafferty (Prefers Democratic Party)
Marko Liias (Prefers Democratic Party)
Matt Seymour (Prefers Libertarian Party)
Michelle Jasmer (Prefers Democratic Party)
Bill Penor (Prefers Republican Party)
Richard (Dick) Muri (Prefers Republican Party)
Denny Heck (Prefers Democratic Party)
Marty McClendon (Prefers Republican Party)
Write-In

Secretary of State Regular 4 year term - Vote for 1

- Ed Minger (Prefers Independent Party)
Gentry Lange (Prefers Progressive Party)
Kim Wyman (Prefers Republican Party)
Gael Tarleton (Prefers Democratic Party)
Write-In

Treasurer Regular 4 year term - Vote for 1

- Duane A. Davidson (Prefers Republican Party)
Mike Pellicciotti (Prefers Democratic Party)
Write-In

Auditor Regular 4 year term - Vote for 1

- Joshua Casey (Prefers Democratic Party)
Chris Leyba (Prefers Republican Party)
Pat (Patrice) McCarthy (Prefers Democratic Party)
Write-In

Attorney General Regular 4 year term - Vote for 1

- Matt Larkin (Prefers Republican Party)
Mike Vaska (Prefers GOP Party)
Brett Rogers (Prefers Republican Party)
Bob Ferguson (Prefers Democratic Party)
Write-In

State Partisan Office

- Commissioner of Public Lands Regular 4 year term - Vote for 1
Cameron Whitney (Prefers Republican Party)
Steve Sharon (Prefers Republican Party)
Hilary Franz (Prefers Democratic Party)
Kelsey Reyes (Prefers Libertarian Party)
Maryam Abasbarzy (Prefers Republican Party)
Sue Kuehl Pederson (Prefers Republican Party)
Frank Wallbrown (Prefers Democratic Party)
Write-In

State Nonpartisan Office

Superintendent of Public Instruction Regular 4 year term - Vote for 1

- Ron Higgins
Maia Espinoza
Stan Lippmann
David Spring
Dennis Wick
Chris Reykdal
Write-In

State Partisan Office

Insurance Commissioner Regular 4 year term - Vote for 1

- Anthony Welti (Prefers Libertarian Party)
Chirayu Avinash Patel (Prefers Republican Party)
Mike Kreidler (Prefers Democratic Party)
Write-In

Legislative District 1 State Senator Short & Full 4 year term - Vote for 1

- Art Coday (Prefers Republican Party)
Derek Stanford (Prefers Democratic Party)
Write-In

Legislative District 1 State Representative Pos. 1 Short & Full 2 year term - Vote for 1

- Adam Bartholomew (Prefers Republican Party)
Davina Duerr (Prefers Democratic Party)
Write-In

Legislative District 1 State Representative Pos. 2 Regular 2 year term - Vote for 1

- Jeb Brewer (Prefers Republican Party)
Gary Morgan (Prefers GOP Party)
Shelley Kloba (Prefers Democratic Party)
Write-In

State Partisan Office

Legislative District 10 State Senator Short & Full 4 year term - Vote for 1

- Ron Muzzall (Prefers Republican Party)
Helen Price Johnson (Prefers Democratic Party)
Write-In

Legislative District 10 State Representative Pos. 1 Regular 2 year term - Vote for 1

- Ivan Lewis (Prefers Democratic Party)
Angie Homola (Prefers Democratic Party)
Greg Gilday (Prefers GOP Party)
Scott McMullen (Prefers Democratic Party)
Suzanne Woodard (Prefers Democratic Party)
Write-In

Legislative District 10 State Representative Pos. 2 Regular 2 year term - Vote for 1

- Taylor Zimmermann (Prefers Progressive Party)
Dave Paul (Prefers Democratic Party)
Bill Bruch (Prefers Republican Party)
Write-In

Legislative District 21 State Representative Pos. 1 Regular 2 year term - Vote for 1

- Strom H. Peterson (Prefers Democratic Party)
Gant Diede (Prefers Democratic Party)
Brian Thompson (Prefers Republican Party)
Write-In

Legislative District 21 State Representative Pos. 2 Regular 2 year term - Vote for 1

- Lillian Ortiz-Self (Prefers Democratic Party)
Amy Schaper (Prefers Republican Party)
Willie Russell (States No Party Preference)
Write-In

Legislative District 32 State Representative Pos. 1 Regular 2 year term - Vote for 1

- Shirley Sutton (Prefers Democratic Party)
Keith Smith (Prefers Democratic Party)
Cindy Ryu (Prefers Democratic Party)
Write-In

Legislative District 32 State Representative Pos. 2 Regular 2 year term - Vote for 1

- Gray Petersen (Prefers Democratic Party)
Tamra Smilanich (Prefers Non Partisan Party)
Lauren Davis (Prefers Democratic Party)
Write-In

**Official Primary Sample/Provisional Ballot**

**August 4, 2020**

**Snohomish County, Washington**

**State  
Partisan Office**

**Legislative District 38  
State Senator**  
Unexpired 2 year term - Vote for 1

- Kelly M. Fox**  
*(Prefers Democratic Party)*
- Bernard Moody**  
*(Prefers Republican Party)*
- June Robinson**  
*(Prefers Democratic Party)*
- \_\_\_\_\_  
Write-In

**Legislative District 38  
State Representative Pos. 1**  
Short & Full 2 year term - Vote for 1

- Bert Johnson**  
*(Prefers Republican Party)*
- Jorge Garrido**  
*(Prefers Libertarian Party)*
- Lacey Sauvageau**  
*(Prefers Democrat Party)*
- Emily Wicks**  
*(Prefers Democratic Party)*
- \_\_\_\_\_  
Write-In

**Legislative District 38  
State Representative Pos. 2**  
Regular 2 year term - Vote for 1

- Mike Sells**  
*(Prefers Democratic Party)*
- David Wiley**  
*(Prefers Libertarian Party)*
- \_\_\_\_\_  
Write-In

**Legislative District 39  
State Senator**  
Regular 4 year term - Vote for 1

- Kathryn A. Lewandowsky**  
*(Prefers WA Progressive Party)*
- Keith L. Wagoner**  
*(Prefers Republican Party)*
- \_\_\_\_\_  
Write-In

**Legislative District 39  
State Representative Pos. 1**  
Regular 2 year term - Vote for 1

- Robert J. Sutherland**  
*(Prefers Republican Party)*
- Claus Joens**  
*(Prefers Democratic Party)*
- \_\_\_\_\_  
Write-In

**Legislative District 39  
State Representative Pos. 2**  
Regular 2 year term - Vote for 1

- Sandy Mesenbrink**  
*(Prefers Republican Party)*
- Ryan Johnson**  
*(Prefers Democratic Party)*
- Carolyn Eslick**  
*(Prefers Republican Party)*
- \_\_\_\_\_  
Write-In

**Legislative District 44  
State Representative Pos. 1**  
Regular 2 year term - Vote for 1

- John T. Kartak**  
*(Prefers Republican Party)*
- John Lovick**  
*(Prefers Democratic Party)*
- \_\_\_\_\_  
Write-In

**Legislative District 44  
State Representative Pos. 2**  
Regular 2 year term - Vote for 1

- Mark A. James**  
*(Prefers Republican Party)*
- Anne Anderson**  
*(Prefers Democratic Party)*
- April Berg**  
*(Prefers Democratic Party)*
- \_\_\_\_\_  
Write-In

**County  
Partisan Office**

**Snohomish County  
Council District 4**  
Unexpired 1 year term - Vote for 1

- Delia O'Malley**  
*(Prefers Independent Party)*
- Amber King**  
*(Prefers Democratic Party)*
- Brenda Carrington**  
*(Prefers Republican Party)*
- Jared Mead**  
*(Prefers Democratic Party)*
- \_\_\_\_\_  
Write-In

**Public Utility  
Nonpartisan Office**

**Public Utility District No. 1  
Commissioner District 1**  
Regular 6 year term - Vote for 1

- Bruce King**
- Charles Cheshvan Sias**
- Sidney (Sid) Logan**
- Rob Toyer**
- \_\_\_\_\_  
Write-In

**School**

**Darrington School District No. 330  
Proposition No. 1**

Supplemental Educational Programs and Operation Levy

The Board of Directors of Darrington School District No. 330 adopted Resolution No. 395-04-20, concerning supplemental funding for educational programs and operation. This proposition would authorize the District to supplement, in response to recent legislative changes, the remaining two years of the levy approved at the April 2018 special election, by levying the following excess taxes on all taxable property within the District, for support of educational programs and operation expenses not funded by the State:

Collection Year	Estimated Levy Rate/\$1,000 Assessed Value	Supplemental Levy Amount
2021	\$1.09	\$510,000
2022	\$1.09	\$510,000

all as provided in Resolution No. 395-04-20. Should this proposition be approved?

- Levy Yes**
- Levy No**

**School**

**Everett School District No. 2  
Proposition No. 1**

Capital Improvement and School Construction General Obligation Bonds - \$317,400,000

The Board of Directors of Everett School District No. 2 adopted Resolution No. 1230 concerning a proposition to finance capital improvements to its facilities. This proposition would authorize the District to construct facilities to support STEM/vocational career pathways programs at each high school, upgrade HVAC and electrical systems, improve safety/security, build elementary classroom additions, replace three aging elementary schools and modernize or upgrade classrooms and cafeterias at Cascade and Everett High Schools; issue \$317,400,000 of general obligation bonds maturing within 20 years; and levy annual excess property tax levies to pay such bonds, as provided in Resolution No. 1230.

Should this proposition be:

- Approved**
- Rejected**

**Lakewood School District No. 306  
Proposition No. 1**

Renewal Levy for Educational Programs and Operations

The Board of Directors of Lakewood School District No. 306 adopted Resolution No. 07-20 concerning a proposition for a renewal levy for educational enrichment. This proposition would authorize the District to levy the following excess taxes to renew an expiring levy, on all taxable property within the District, to maintain and support the District's educational programs and operations, which are not funded or not fully funded by the State, all as described in Resolution No. 07-20:

Collection Years	Estimated Levy Rate/\$1,000 Assessed Value	Levy Amount
2021	\$2.11	\$6,369,514
2022	\$2.09	\$6,679,013
2023	\$2.06	\$7,003,944
2024	\$2.04	\$7,345,033

Should this proposition be approved?

- Yes**
- No**

**Official Primary Sample/Provisional Ballot**

**August 4, 2020**

**Snohomish County, Washington**

**School**

**Lakewood School District No. 306  
Proposition No. 2**

Renewal Levy for Technology Improvements

The Board of Directors of Lakewood School District No. 306 adopted Resolution No. 08-20 concerning technology. This proposition would authorize funding technology improvements and maintenance including equipment, infrastructure and new technology systems for operations and instruction, and related administrative expenses; and authorizes the following excess levies for such purposes on all taxable property within the District:

Collection Years	Approximate Levy Rate/\$1,000 Assessed Value	Levy Amount
2021	\$0.13	\$412,500
2022	\$0.13	\$437,500

Should this proposition be approved?

Yes

No

**Election of Political Party Precinct Committee Officer Partisan Office**

**For this office only:** In order to vote for precinct committee officer, a partisan office, you must affirm that you are a Democrat or a Republican and may vote only for one candidate from the party you select. Your vote for a candidate affirms your affiliation with the same party as the candidate. This preference is private and will not be matched to your name or shared.

**Arlington 7 Precinct Committee Officer - Republican Party Candidates**  
Regular 2 year term - Vote for 1

- Kari Ilonummi  
*I affirm I am a Republican*
- Randy Tendering  
*I affirm I am a Republican*

**Brier 5 Precinct Committee Officer - Democratic Party Candidates**  
Regular 2 year term - Vote for 1

- Natalie Fuller  
*I affirm I am a Democrat*
- Elizabeth (Liz) Curran  
*I affirm I am a Democrat*

**Cypress Precinct Committee Officer - Democratic Party Candidates**  
Regular 2 year term - Vote for 1

- Derek Fike  
*I affirm I am a Democrat*
- Othman Riad  
*I affirm I am a Democrat*

**Election of Political Party Precinct Committee Officer Partisan Office**

**Edmonds 19 Precinct Committee Officer - Democratic Party Candidates**  
Regular 2 year term - Vote for 1

- Adrienne Fraley Monillas  
*I affirm I am a Democrat*
- Mo Pannier  
*I affirm I am a Democrat*
- Jenna Nand  
*I affirm I am a Democrat*

**Edmonds 26 Precinct Committee Officer - Democratic Party Candidates**  
Regular 2 year term - Vote for 1

- Ron Harrell  
*I affirm I am a Democrat*
- Ronald Lundberg  
*I affirm I am a Democrat*

**Edmonds 37 Precinct Committee Officer - Democratic Party Candidates**  
Regular 2 year term - Vote for 1

- Paul Ferrari  
*I affirm I am a Democrat*
- Heather Damron  
*I affirm I am a Democrat*

**Everett 13 Precinct Committee Officer - Democratic Party Candidates**  
Regular 2 year term - Vote for 1

- Andrea Vaughn  
*I affirm I am a Democrat*
- Charles J. Mister  
*I affirm I am a Democrat*

**Everett 19 Precinct Committee Officer - Democratic Party Candidates**  
Regular 2 year term - Vote for 1

- Jonathan C. Peebles  
*I affirm I am a Democrat*
- Skyler Clary  
*I affirm I am a Democrat*

**Everett 20 Precinct Committee Officer - Democratic Party Candidates**  
Regular 2 year term - Vote for 1

- Hayden Jones  
*I affirm I am a Democrat*
- Victor C. Harris  
*I affirm I am a Democrat*

**Everett 27 Precinct Committee Officer - Democratic Party Candidates**  
Regular 2 year term - Vote for 1

- Charles Adkins  
*I affirm I am a Democrat*
- Moh Kilani  
*I affirm I am a Democrat*

**Everett 80 Precinct Committee Officer - Democratic Party Candidates**  
Regular 2 year term - Vote for 1

- Leri Lee Harper  
*I affirm I am a Democrat*
- Paul Benz  
*I affirm I am a Democrat*

**Election of Political Party Precinct Committee Officer Partisan Office**

**Everett 93 Precinct Committee Officer - Democratic Party Candidates**  
Regular 2 year term - Vote for 1

- Fred Plappert  
*I affirm I am a Democrat*
- Patricia Mercer  
*I affirm I am a Democrat*

**Everett 95 Precinct Committee Officer - Democratic Party Candidates**  
Regular 2 year term - Vote for 1

- Seth Pilkey  
*I affirm I am a Democrat*
- Ron Berry  
*I affirm I am a Democrat*

**Hampton Precinct Committee Officer - Democratic Party Candidates**  
Regular 2 year term - Vote for 1

- Stephanie Schindler  
*I affirm I am a Democrat*
- Larry McIntosh  
*I affirm I am a Democrat*

**High Rock Precinct Committee Officer - Democratic Party Candidates**  
Regular 2 year term - Vote for 1

- Dave Kranz  
*I affirm I am a Democrat*
- Polagaya McLaughlin  
*I affirm I am a Democrat*

**Jeff Precinct Committee Officer - Democratic Party Candidates**  
Regular 2 year term - Vote for 1

- Micah Rowland  
*I affirm I am a Democrat*
- Sandi Bond  
*I affirm I am a Democrat*

**Kennard Precinct Committee Officer - Democratic Party Candidates**  
Regular 2 year term - Vote for 1

- Jessica Gonzalez  
*I affirm I am a Democrat*
- Tyler Kelson  
*I affirm I am a Democrat*

**Lake Stevens 10 Precinct Committee Officer - Democratic Party Candidates**  
Regular 2 year term - Vote for 1

- Joyce Copley  
*I affirm I am a Democrat*
- Elizabeth Coelho  
*I affirm I am a Democrat*
- Jeff Craig  
*I affirm I am a Democrat*

**Lake Stevens 24 Precinct Committee Officer - Republican Party Candidates**  
Regular 2 year term - Vote for 1

- Christopher McTee  
*I affirm I am a Republican*
- Mark Buse  
*I affirm I am a Republican*

**Official Primary Sample/Provisional Ballot**

**August 4, 2020**

**Snohomish County, Washington**

**Election of Political Party  
Precinct Committee Officer  
Partisan Office**

**Lind  
Precinct Committee Officer -  
Republican Party Candidates**  
Regular 2 year term - Vote for 1

**Carl Aardsma**  
*I affirm I am a Republican*

**Anita Shad**  
*I affirm I am a Republican*

**Election of Political Party  
Precinct Committee Officer  
Partisan Office**

**Meadowdale  
Precinct Committee Officer -  
Republican Party Candidates**  
Regular 2 year term - Vote for 1

**Bruce Ellis**  
*I affirm I am a Republican*

**Kaare K. Ness**  
*I affirm I am a Republican*

**Election of Political Party  
Precinct Committee Officer  
Partisan Office**

**Stafford  
Precinct Committee Officer -  
Republican Party Candidates**  
Regular 2 year term - Vote for 1

**Michael Albrecht**  
*I affirm I am a Republican*

**Tim Bendokas**  
*I affirm I am a Republican*

**Lynnwood 12  
Precinct Committee Officer -  
Democratic Party Candidates**  
Regular 2 year term - Vote for 1

**Dan Williams**  
*I affirm I am a Democrat*

**James Trefry**  
*I affirm I am a Democrat*

**Mill Creek 2  
Precinct Committee Officer -  
Democratic Party Candidates**  
Regular 2 year term - Vote for 1

**Derick DeWitt**  
*I affirm I am a Democrat*

**April Berg**  
*I affirm I am a Democrat*

**Stanwood 5  
Precinct Committee Officer -  
Republican Party Candidates**  
Regular 2 year term - Vote for 1

**Roland Cave**  
*I affirm I am a Republican*

**Sarah Brannon**  
*I affirm I am a Republican*

**Lynnwood 13  
Precinct Committee Officer -  
Democratic Party Candidates**  
Regular 2 year term - Vote for 1

**Marylou Eckart**  
*I affirm I am a Democrat*

**Mike Eckart**  
*I affirm I am a Democrat*

**Mill Creek 17  
Precinct Committee Officer -  
Republican Party Candidates**  
Regular 2 year term - Vote for 1

**Nicholas Swett**  
*I affirm I am a Republican*

**Karen Meredith**  
*I affirm I am a Republican*

**Stickney  
Precinct Committee Officer -  
Democratic Party Candidates**  
Regular 2 year term - Vote for 1

**Bret Chiafalo**  
*I affirm I am a Democrat*

**Darla Varrenti**  
*I affirm I am a Democrat*

**Lynnwood 16  
Precinct Committee Officer -  
Democratic Party Candidates**  
Regular 2 year term - Vote for 1

**Jon Lyons**  
*I affirm I am a Democrat*

**Lisa Utter**  
*I affirm I am a Democrat*

**Mountlake Terrace 10  
Precinct Committee Officer -  
Democratic Party Candidates**  
Regular 2 year term - Vote for 1

**Grace Lindsley**  
*I affirm I am a Democrat*

**Lael Catherine White**  
*I affirm I am a Democrat*

**Sunnyside  
Precinct Committee Officer -  
Republican Party Candidates**  
Regular 2 year term - Vote for 1

**Ed Osgood**  
*I affirm I am a Republican*

**Debra J. Idso**  
*I affirm I am a Republican*

**Lynnwood 26  
Precinct Committee Officer -  
Democratic Party Candidates**  
Regular 2 year term - Vote for 1

**Warren Palmer**  
*I affirm I am a Democrat*

**Elizabeth Ann Lunsford**  
*I affirm I am a Democrat*

**Mountlake Terrace 13  
Precinct Committee Officer -  
Democratic Party Candidates**  
Regular 2 year term - Vote for 1

**Gwyn Higginbotham**  
*I affirm I am a Democrat*

**Marguerite Dekker**  
*I affirm I am a Democrat*

**Windrose  
Precinct Committee Officer -  
Democratic Party Candidates**  
Regular 2 year term - Vote for 1

**Rubin Jackson**  
*I affirm I am a Democrat*

**John Agyapong**  
*I affirm I am a Democrat*

**Marysville 3  
Precinct Committee Officer -  
Democratic Party Candidates**  
Regular 2 year term - Vote for 1


**Raymond (Ray) Miller**  
*I affirm I am a Democrat*

**Kelly Wright**  
*I affirm I am a Democrat*

**Mountlake Terrace 14  
Precinct Committee Officer -  
Democratic Party Candidates**  
Regular 2 year term - Vote for 1

**Kate Miyasato**  
*I affirm I am a Democrat*

**Nicolas Quijano**  
*I affirm I am a Democrat*

 **End of ballot.  
Thank you for voting!**

**Marysville 31  
Precinct Committee Officer -  
Democratic Party Candidates**  
Regular 2 year term - Vote for 1

**Andrew Dial**  
*I affirm I am a Democrat*

**Teresa Myer**  
*I affirm I am a Democrat*

**Panther Creek  
Precinct Committee Officer -  
Democratic Party Candidates**  
Regular 2 year term - Vote for 1

**Christopher Dingle**  
*I affirm I am a Democrat*

**Kerrie McLaughlin**  
*I affirm I am a Democrat*

**Marysville 32  
Precinct Committee Officer -  
Democratic Party Candidates**  
Regular 2 year term - Vote for 1

**Jeffery Denton**  
*I affirm I am a Democrat*

**Michael Rainey**  
*I affirm I am a Democrat*

**Sisco  
Precinct Committee Officer -  
Republican Party Candidates**  
Regular 2 year term - Vote for 1

**James Kline**  
*I affirm I am a Republican*

**Henry Herbert**  
*I affirm I am a Republican*

**Marysville 54  
Precinct Committee Officer -  
Republican Party Candidates**  
Regular 2 year term - Vote for 1

**Shirlee Kippen**  
*I affirm I am a Republican*

**Mary D. Collins**  
*I affirm I am a Republican*

**Snohomish 8  
Precinct Committee Officer -  
Republican Party Candidates**  
Regular 2 year term - Vote for 1

**Bob McCaughan**  
*I affirm I am a Republican*

**Don Baldwin**  
*I affirm I am a Republican*