

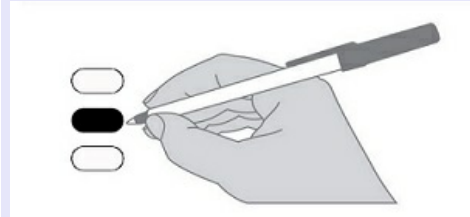
# Official General Election Sample/Provisional Ballot

November 3, 2020

Snohomish County, Washington

## Instructions

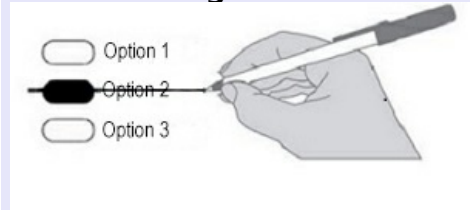
### How to vote



Fill in the oval next to your choice.  
Use blue or black ink.  
Do not use felt pen.

Voting more than once per question or race will cancel that vote.

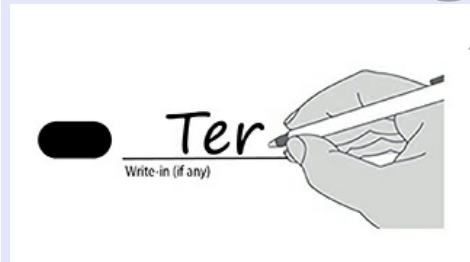
### How to change a vote



Draw a line through the entire incorrect name or choice.

You may then make another selection.

### How to vote for a person not on the ballot



Write the name of the person in the space provided at the end of the race and fill in the oval.

This ballot contains all races and measures in Snohomish County. You may not be eligible to vote for some races or measures.

For a list of the people and organizations that donated to state and local candidates and ballot measure campaigns, visit [www.pdc.wa.gov](http://www.pdc.wa.gov).

## Referendum Measure

### Referendum Measure No. 90

The legislature passed Engrossed Substitute Senate Bill 5395 concerning comprehensive sexual health education. This bill would require school districts to adopt or develop, consistent with state standards, comprehensive age-appropriate sexual health education, as defined, for all students, and excuse students if their parents request.

Should this bill be:

- Approved  
 Rejected

## Advisory Votes

### Advisory Vote No. 32 Engrossed Substitute Senate Bill 5323

The legislature imposed, without a vote of the people, a retail sales tax on pass-through charges retail establishments collect for specified carryout bags, costing \$32,000,000 in its first ten years, for government spending.

This tax increase should be:

- Repealed  
 Maintained

### Advisory Vote No. 33 Substitute Senate Bill 5628

The legislature imposed, without a vote of the people, a tax on heavy equipment rentals to consumers by heavy equipment rental property dealers, costing \$103,000,000 in its first ten years, for government spending.

This tax increase should be:

- Repealed  
 Maintained

## Advisory Votes

### Advisory Vote No. 34 Engrossed Substitute Senate Bill 6492

The legislature increased, without a vote of the people, the business and occupation tax rate for certain businesses, while reducing certain surcharges, costing \$843,000,000 in its first ten years, for government spending.

This tax increase should be:

- Repealed  
 Maintained

### Advisory Vote No. 35 Engrossed Senate Bill 6690

The legislature increased, without a vote of the people, the business and occupation tax on manufacturers of commercial airplanes, including components or tooling, costing \$1,024,000,000 in its first ten years, for government spending.

This tax increase should be:

- Repealed  
 Maintained

## Proposed Constitutional Amendment

### Engrossed Senate Joint Resolution No. 8212

The legislature has proposed a constitutional amendment on investment of public funds. This amendment would allow public money held in a fund for long-term care services and supports to be invested by governments as authorized by state law, including investments in private stocks.

Should this constitutional amendment be:

- Approved  
 Rejected

**Federal  
Partisan Office**

**President / Vice President**

Regular 4 year term - Vote for 1

- Joseph R. Biden / Kamala D. Harris**  
*Democratic Party Nominees*
- Donald J. Trump / Michael R. Pence**  
*Republican Party Nominees*
- Jo Jorgensen / Jeremy "Spike" Cohen**  
*Libertarian Party Nominees*
- Howie Hawkins / Angela Walker**  
*Green Party Nominees*
- Gloria La Riva / Sunil Freeman**  
*Socialism and Liberation Party Nominees*
- Alyson Kennedy / Malcolm M. Jarrett**  
*Socialist Workers Party Nominees*
- \_\_\_\_\_  
Write-In

**Partisan Office Information**

**READ: Each candidate for President and Vice President is the official nominee of a political party. For other partisan offices, each candidate may state a political party that he or she prefers. A candidate's preference does not imply that the candidate is nominated or endorsed by the party, or that the party approves of or associates with that candidate.**

**Congressional District 1  
U.S. Representative**

Regular 2 year term - Vote for 1

- Suzan DelBene**  
*(Prefers Democratic Party)*
- Jeffrey Beeler, Sr.**  
*(Prefers Republican Party)*
- \_\_\_\_\_  
Write-In

**Congressional District 2  
U.S. Representative**

Regular 2 year term - Vote for 1

- Rick Larsen**  
*(Prefers Democratic Party)*
- Timothy S. Hazelo**  
*(Prefers Republican Party)*
- \_\_\_\_\_  
Write-In

**Congressional District 7  
U.S. Representative**

Regular 2 year term - Vote for 1

- Pramila Jayapal**  
*(Prefers Democratic Party)*
- Craig Keller**  
*(Prefers Republican Party)*
- \_\_\_\_\_  
Write-In

**State  
Partisan Office**

**Governor**

Regular 4 year term - Vote for 1

- Jay Inslee**  
*(Prefers Democratic Party)*
- Loren Culp**  
*(Prefers Republican Party)*
- \_\_\_\_\_  
Write-In

**State  
Partisan Office**

**Lt. Governor**

Regular 4 year term - Vote for 1

- Denny Heck**  
*(Prefers Democratic Party)*
- Marko Liias**  
*(Prefers Democratic Party)*
- \_\_\_\_\_  
Write-In

**Secretary of State**

Regular 4 year term - Vote for 1

- Kim Wyman**  
*(Prefers Republican Party)*
- Gael Tarleton**  
*(Prefers Democratic Party)*
- \_\_\_\_\_  
Write-In

**Treasurer**

Regular 4 year term - Vote for 1

- Mike Pellicciotti**  
*(Prefers Democratic Party)*
- Duane A. Davidson**  
*(Prefers Republican Party)*
- \_\_\_\_\_  
Write-In

**Auditor**

Regular 4 year term - Vote for 1

- Pat (Patrice) McCarthy**  
*(Prefers Democratic Party)*
- Chris Leyba**  
*(Prefers Republican Party)*
- \_\_\_\_\_  
Write-In

**Attorney General**

Regular 4 year term - Vote for 1

- Bob Ferguson**  
*(Prefers Democratic Party)*
- Matt Larkin**  
*(Prefers Republican Party)*
- \_\_\_\_\_  
Write-In

**Commissioner of Public Lands**

Regular 4 year term - Vote for 1

- Hilary Franz**  
*(Prefers Democratic Party)*
- Sue Kuehl Pederson**  
*(Prefers Republican Party)*
- \_\_\_\_\_  
Write-In

**State  
Nonpartisan Office**

**Superintendent of Public  
Instruction**

Regular 4 year term - Vote for 1

- Chris Reykdal**
- Maia Espinoza**
- \_\_\_\_\_  
Write-In

**State  
Partisan Office**

**Insurance Commissioner**

Regular 4 year term - Vote for 1

- Mike Kreidler**  
*(Prefers Democratic Party)*
- Chirayu Avinash Patel**  
*(Prefers Republican Party)*
- \_\_\_\_\_  
Write-In

**Legislative  
Partisan Office**

**Legislative District 1  
State Senator**

Short & Full 4 year term - Vote for 1

- Derek Stanford**  
*(Prefers Democratic Party)*
- Art Coday**  
*(Prefers Republican Party)*
- \_\_\_\_\_  
Write-In

**Legislative District 1  
State Representative Pos. 1**

Short & Full 2 year term - Vote for 1

- Davina Duerr**  
*(Prefers Democratic Party)*
- Adam Bartholomew**  
*(Prefers Republican Party)*
- \_\_\_\_\_  
Write-In

**Legislative District 1  
State Representative Pos. 2**

Regular 2 year term - Vote for 1

- Shelley Kloba**  
*(Prefers Democratic Party)*
- Jeb Brewer**  
*(Prefers Republican Party)*
- \_\_\_\_\_  
Write-In

**Legislative District 10  
State Senator**

Short & Full 4 year term - Vote for 1

- Ron Muzzall**  
*(Prefers Republican Party)*
- Helen Price Johnson**  
*(Prefers Democratic Party)*
- \_\_\_\_\_  
Write-In

**Legislative District 10  
State Representative Pos. 1**

Regular 2 year term - Vote for 1

- Greg Gilday**  
*(Prefers GOP Party)*
- Angie Homola**  
*(Prefers Democratic Party)*
- \_\_\_\_\_  
Write-In

**Legislative District 10  
State Representative Pos. 2**

Regular 2 year term - Vote for 1

- Bill Bruch**  
*(Prefers Republican Party)*
- Dave Paul**  
*(Prefers Democratic Party)*
- \_\_\_\_\_  
Write-In

**Official General Election Sample/Provisional Ballot**  
**November 3, 2020**  
 Snohomish County, Washington

**Legislative Partisan Office**

**Legislative District 21  
 State Representative Pos. 1**  
 Regular 2 year term - Vote for 1

**Strom H. Peterson**  
*(Prefers Democratic Party)*

**Brian Thompson**  
*(Prefers Republican Party)*

\_\_\_\_\_  
 Write-In

**Legislative District 21  
 State Representative Pos. 2**  
 Regular 2 year term - Vote for 1

**Lillian Ortiz-Self**  
*(Prefers Democratic Party)*

**Amy Schaper**  
*(Prefers Republican Party)*

\_\_\_\_\_  
 Write-In

**Legislative District 32  
 State Representative Pos. 1**  
 Regular 2 year term - Vote for 1

**Cindy Ryu**  
*(Prefers Democratic Party)*

**Shirley Sutton**  
*(Prefers Democratic Party)*

\_\_\_\_\_  
 Write-In

**Legislative District 32  
 State Representative Pos. 2**  
 Regular 2 year term - Vote for 1

**Lauren Davis**  
*(Prefers Democratic Party)*

**Tamra Smilanich**  
*(Prefers Non Partisan Party)*

\_\_\_\_\_  
 Write-In

**Legislative District 38  
 State Senator**  
 Unexpired 2 year term - Vote for 1

**June Robinson**  
*(Prefers Democratic Party)*

**Bernard Moody**  
*(Prefers Republican Party)*

\_\_\_\_\_  
 Write-In

**Legislative District 38  
 State Representative Pos. 1**  
 Short & Full 2 year term - Vote for 1

**Emily Wicks**  
*(Prefers Democratic Party)*

**Bert Johnson**  
*(Prefers Republican Party)*

\_\_\_\_\_  
 Write-In

**Legislative Partisan Office**

**Legislative District 38  
 State Representative Pos. 2**  
 Regular 2 year term - Vote for 1

**Mike Sells**  
*(Prefers Democratic Party)*

**David Wiley**  
*(Prefers Libertarian Party)*

\_\_\_\_\_  
 Write-In

**Legislative District 39  
 State Senator**  
 Regular 4 year term - Vote for 1

**Keith L. Wagoner**  
*(Prefers Republican Party)*

**Kathryn A. Lewandowsky**  
*(Prefers WA Progressive Party)*

\_\_\_\_\_  
 Write-In

**Legislative District 39  
 State Representative Pos. 1**  
 Regular 2 year term - Vote for 1

**Robert J. Sutherland**  
*(Prefers Republican Party)*

**Claus Joens**  
*(Prefers Democratic Party)*

\_\_\_\_\_  
 Write-In

**Legislative District 39  
 State Representative Pos. 2**  
 Regular 2 year term - Vote for 1

**Carolyn Eslick**  
*(Prefers Republican Party)*

**Ryan Johnson**  
*(Prefers Democratic Party)*

\_\_\_\_\_  
 Write-In

**Legislative District 44  
 State Representative Pos. 1**  
 Regular 2 year term - Vote for 1

**John Lovick**  
*(Prefers Democratic Party)*

**John T. Kartak**  
*(Prefers Republican Party)*

\_\_\_\_\_  
 Write-In

**Legislative District 44  
 State Representative Pos. 2**  
 Regular 2 year term - Vote for 1

**Mark A. James**  
*(Prefers Republican Party)*

**April Berg**  
*(Prefers Democratic Party)*

\_\_\_\_\_  
 Write-In

**County Partisan Office**

**County Council District 4**  
 Unexpired 1 year term - Vote for 1

**Jared Mead**  
*(Prefers Democratic Party)*

**Brenda Carrington**  
*(Prefers Republican Party)*

\_\_\_\_\_  
 Write-In

**State Supreme Court Nonpartisan Office**

**Justice Position 3**  
 Short & Full 6 year term - Vote for 1

**Dave Larson**

**Raquel Montoya-Lewis**

\_\_\_\_\_  
 Write-In

**Justice Position 4**  
 Regular 6 year term - Vote for 1

**Charles W. Johnson**

\_\_\_\_\_  
 Write-In

**Justice Position 6**  
 Unexpired 2 year term - Vote for 1

**Richard S. Serns**

**G. Helen Whitener**

\_\_\_\_\_  
 Write-In

**Justice Position 7**  
 Regular 6 year term - Vote for 1

**Debra L. Stephens**

\_\_\_\_\_  
 Write-In

**Court of Appeals Nonpartisan Office**

**Division 1, District 2  
 Judge Position 2**  
 Regular 6 year term - Vote for 1

**Linda Coburn**

\_\_\_\_\_  
 Write-In

**Snohomish Superior Court  
Nonpartisan Office**

**Judge Position 8**

Regular 4 year term - Vote for 1

Robert Grant

Cassandra Lopez Shaw

\_\_\_\_\_  
Write-In

**Public Utility  
Nonpartisan Office**

**Public Utilities District No. 1  
Commissioner District 1**

Regular 6 year term - Vote for 1

Sidney (Sid) Logan

Rob Toyer

\_\_\_\_\_  
Write-In

**Fire**

**Fire District 26  
Proposition No. 1**

Property Tax Levy for Fire Protection and  
Emergency Medical Services

The Board of Snohomish County Fire  
Protection District No. 26 (Sky Valley Fire)  
adopted Resolution No. 2020-2  
concerning a proposition to maintain and  
adequately fund District operations.

This proposition would authorize the  
District to restore its regular property tax  
levy to \$1.50 per \$1,000 of assessed value  
to be assessed in 2020 and collected in  
2021. The funds will maintain and improve  
fire protection and emergency medical  
services, replace apparatus, equipment  
and facilities and provide for firefighter  
safety. The maximum allowable levy in  
2020 shall serve as the base for  
subsequent levy limitations as provided  
by chapter 84.55 RCW.

Should this proposition be:

Approved

Rejected

**Fire**

**South Snohomish County Fire &  
Rescue Regional Fire Authority  
Proposition No. 1**

Establishment of Benefit Charge

Shall South Snohomish County Fire &  
Rescue Regional Fire Authority be  
authorized to impose benefit charges  
each year for six (6) years, not to  
exceed an amount equal to sixty  
percent (60%) of its operating budget,  
and be prohibited from imposing an  
additional property tax under RCW  
52.26.140(1)(c)?

Yes

No

**End of ballot.  
Thank you for voting!**