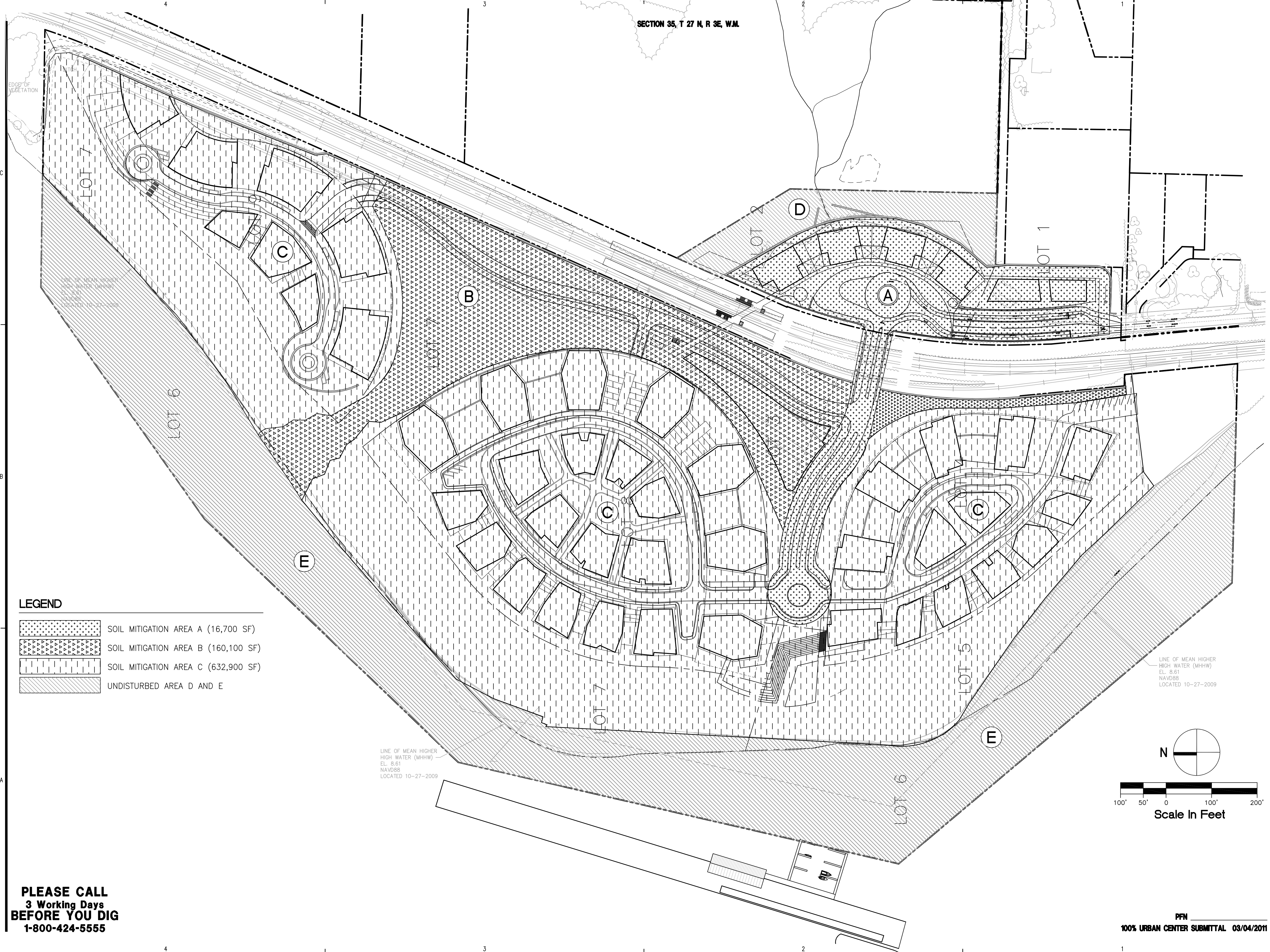


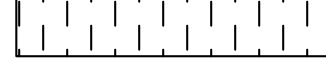



0 1/2" 1" 2"

SECTION 35, T 27 N, R 3E, W.M.

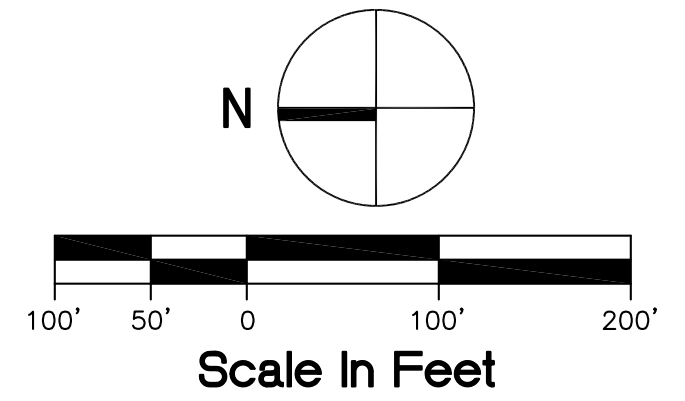


LEGEND

-  SOIL MITIGATION AREA A (16,700 SF)
-  SOIL MITIGATION AREA B (160,100 SF)
-  SOIL MITIGATION AREA C (632,900 SF)
-  UNDISTURBED AREA D AND E

LINE OF MEAN HIGHER HIGH WATER (MHHW)
EL. 8.61
NAVD88
LOCATED 10-27-2009

LINE OF MEAN HIGHER HIGH WATER (MHHW)
EL. 8.61
NAVD88
LOCATED 10-27-2009



PLEASE CALL
3 Working Days
BEFORE YOU DIG
1-800-424-5555

Mar 03, 2011 - 3:56pm
C:\09c\09038c_PWP\Current_UC\09c\09038c_PWP_C-020-SOIL_MNG.dwg
jefz

PERKINS + WILL

1221 Second Avenue
Suite 200
Seattle, WA 98101
T 206.381.6000
F 206.441.4861
www.perkinswill.com

Point Wells Development

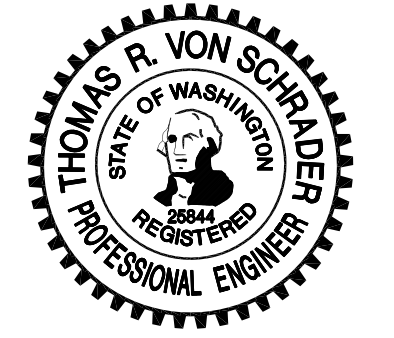
BSRE
Point Wells, LP
c/o Karr Tuttle Campbell
1201 Third Avenue, Suite 2900
Seattle, Washington 98101

in association with:
CIVIL ENGINEER

SvR DESIGN COMPANY
1205 SECOND AVE. SUITE 200
SEATTLE, WA 98101
T 206.223.0326
F 206.223.0125
www.svrdesign.com

Snohomish County Planning & Development Services
APPROVED FOR CONSTRUCTION

By: Randolph R. Sleight, P.E., P.L.S.
R/W Permit No. _____



QA/QC REVIEWER

Revisions

NO.	ISSUE	DATE

Sheet Information

Date	03/04/2011
Job Number	169009.000
Drawn	
Checked	
Approved	

Title

Soil Management Plan

Sheet

C-020

NOT Issued for Construction

Copyright © 2010 Perkins+Will

PFN
100% URBAN CENTER SUBMITTAL 03/04/2011