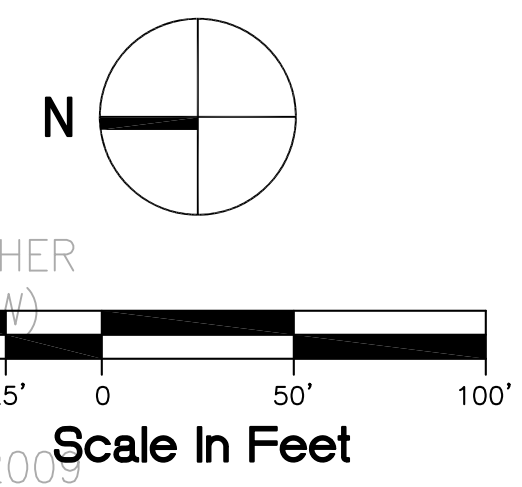
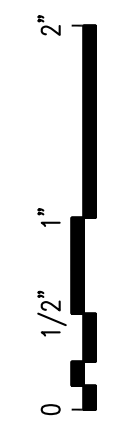
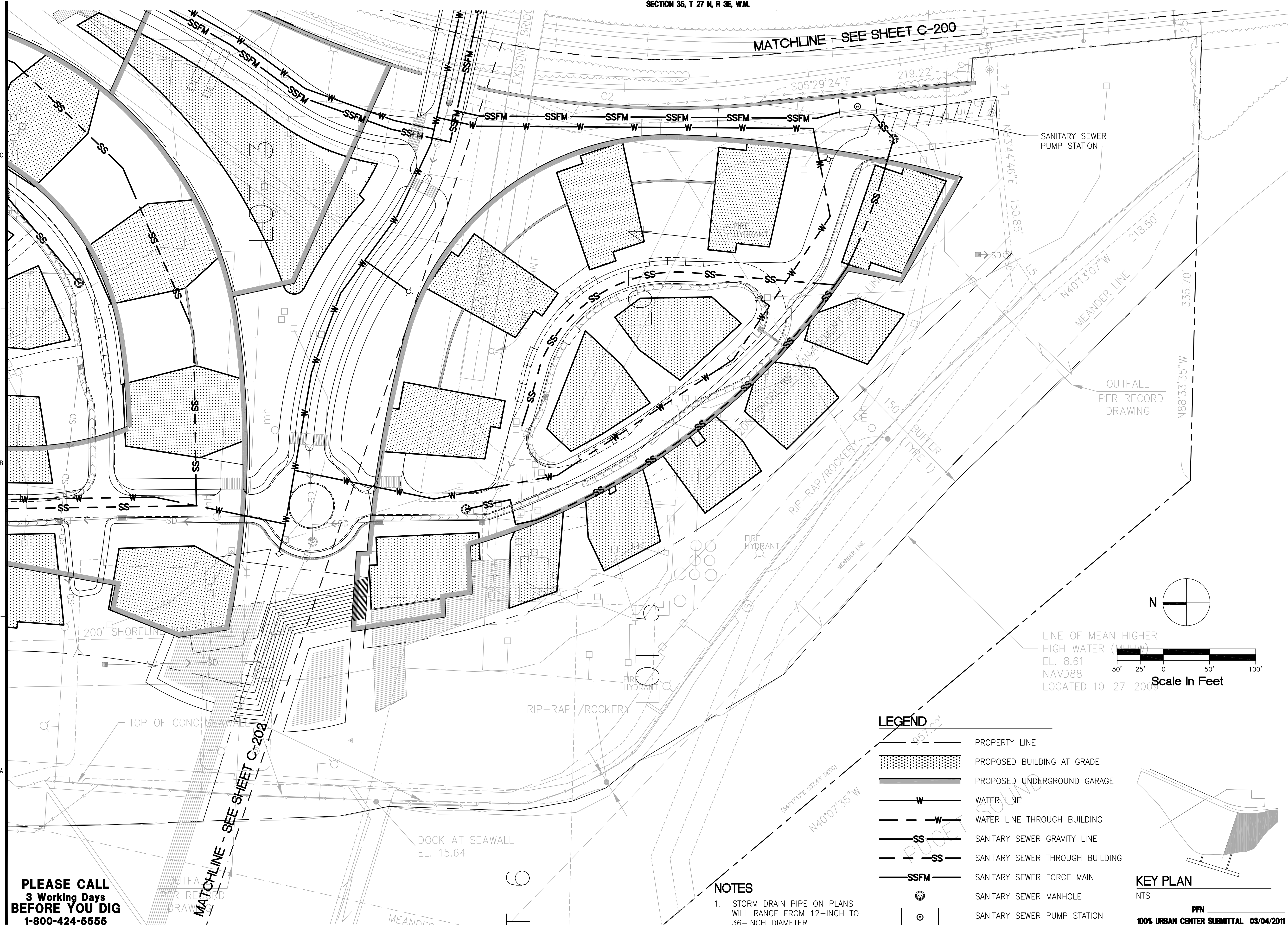


MATCHLINE - SEE SHEET C-200



LEGEND

	PROPERTY LINE
	PROPOSED BUILDING AT GRADE
	PROPOSED UNDERGROUND GARAGE
	WATER LINE
	WATER LINE THROUGH BUILDING
	SANITARY SEWER GRAVITY LINE
	SANITARY SEWER THROUGH BUILDING
	SANITARY SEWER FORCE MAIN
	SANITARY SEWER MANHOLE
	SANITARY SEWER PUMP STATION
	FIRE HYDRANT

- NOTES**
1. STORM DRAIN PIPE ON PLANS WILL RANGE FROM 12-INCH TO 36-INCH DIAMETER.

KEY PLAN
NTS
PFN
100% URBAN CENTER SUBMITTAL 03/04/2011

**PLEASE CALL
3 Working Days
BEFORE YOU DIG
1-800-424-5555**

**PERKINS
+WILL**
1221 Second Avenue
Suite 200
Seattle, WA 98101
P: 206.381.6000
F: 206.441.4861
www.perkinswill.com

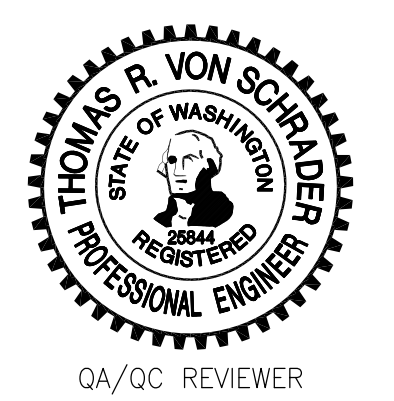
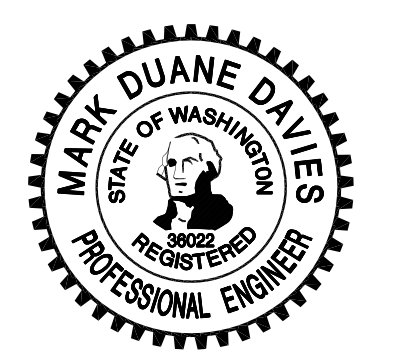
**Point Wells
Development**

**BSRE
Point Wells, LP**
c/o Karr Tuttle Campbell
1201 Third Avenue, Suite 2900
Seattle, Washington 98101
in association with:
CIVIL ENGINEER

SvR DESIGN COMPANY
1205 SECOND AVE. SUITE 200
SEATTLE, WA 98101
T: 206.223.0326
F: 206.223.0125
www.svrdesign.com

Snohomish County Planning & Development Services
APPROVED FOR CONSTRUCTION

By: Randolph R. Sleight, P.E., P.L.S.
R/W Permit No. _____



QA/QC REVIEWER

Revisions

NO.	ISSUE	DATE

Sheet Information

Date	03/04/2011
Job Number	169009.000
Drawn	
Checked	
Approved	

**UTILITY PLAN -
SOUTH VILLAGE**

Sheet
C-203

NOT Issued for Construction
Copyright © 2010 Perkins+Will