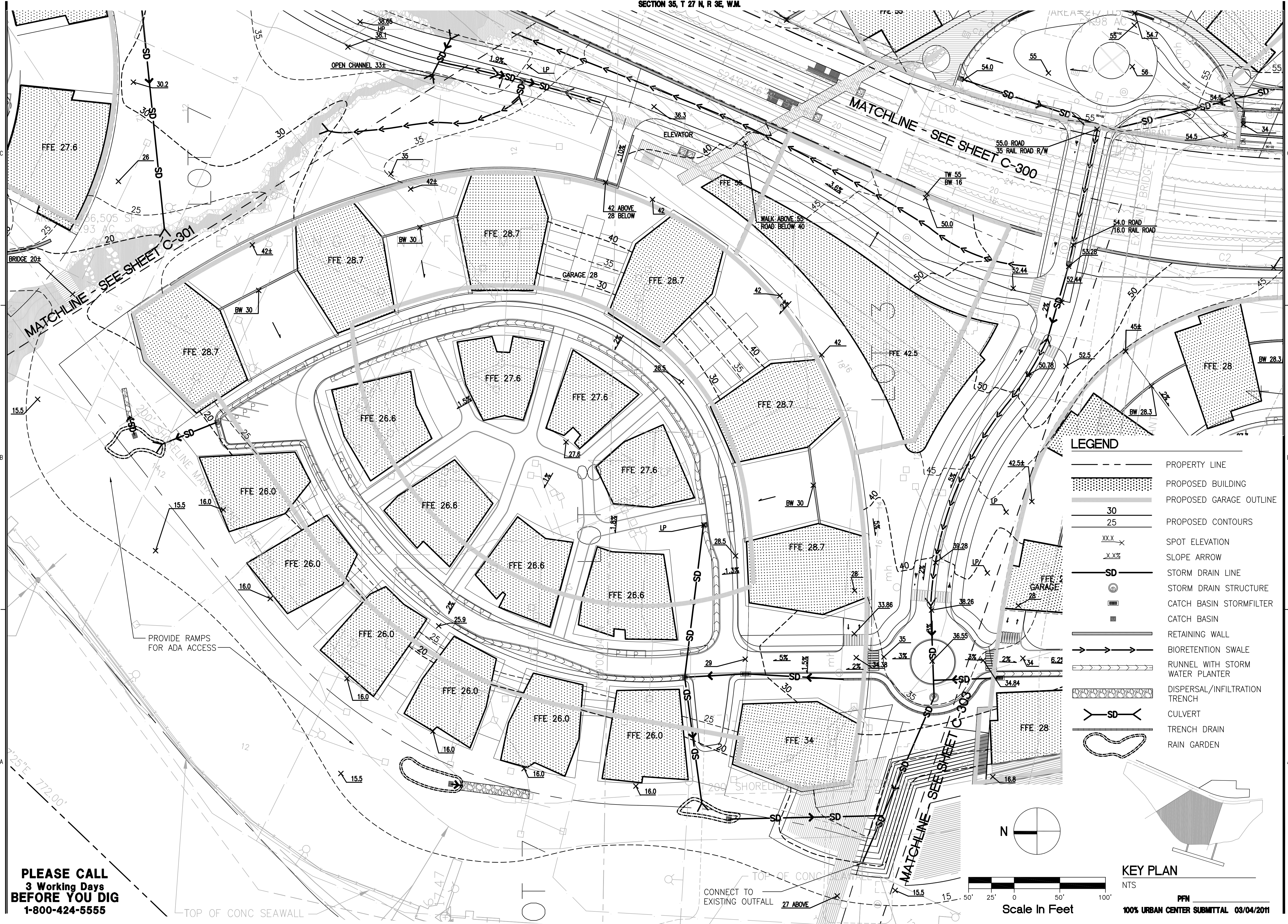




SECTION 35, T 27 N, R 3E, W.M.



PERKINS + WILL
 1221 Second Avenue
 Suite 200
 Seattle, WA 98101
 T 206.381.6000
 F 206.441.4861
 www.perkinswill.com

Point Wells Development

BSRE
Point Wells, LP
 c/o Karr Tuttle Campbell
 1201 Third Avenue, Suite 2900
 Seattle, Washington 98101
 in association with:
 CIVIL ENGINEER

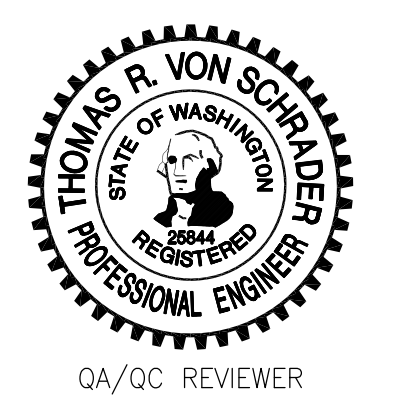
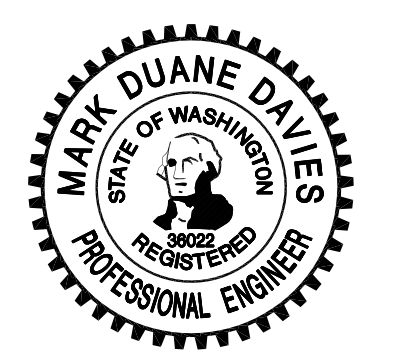
SvR DESIGN COMPANY
 1205 SECOND AVE. SUITE 200
 SEATTLE, WA 98101
 T 206.223.0326
 F 206.223.0125
 www.svrdesign.com

Snohomish County Planning & Development Services
 APPROVED FOR CONSTRUCTION

By: **Randolph R. Sleight, P.E., P.L.S.**
 R/W Permit No. _____

LEGEND

	PROPERTY LINE
	PROPOSED BUILDING
	PROPOSED GARAGE OUTLINE
	PROPOSED CONTOURS
	SPOT ELEVATION
	SLOPE ARROW
	STORM DRAIN LINE
	STORM DRAIN STRUCTURE
	CATCH BASIN STORMFILTER
	CATCH BASIN
	RETAINING WALL
	BIORETENTION SWALE
	RUNNEL WITH STORM WATER PLANTER
	DISPERSAL/INFILTRATION TRENCH
	CULVERT
	TRENCH DRAIN
	RAIN GARDEN



QA/QC REVIEWER

Revisions

NO.	ISSUE	DATE

Sheet Information

Date	03/04/2011
Job Number	169009.000
Drawn	
Checked	
Approved	

Title

GRADING AND DRAINAGE PLAN - CENTRAL VILLAGE

Sheet
C-302

NOT Issued for Construction
 Copyright © 2010 Perkins+Will

PLEASE CALL
3 Working Days
BEFORE YOU DIG
1-800-424-5555

KEY PLAN
 NTS
 PPN
 100% URBAN CENTER SUBMITTAL 03/04/2011



Mar 03, 2011 - 4:06pm
 C:\p\09038c_PWP\Current_UC\PPP_C-302-CR00.dwg
 jef/z