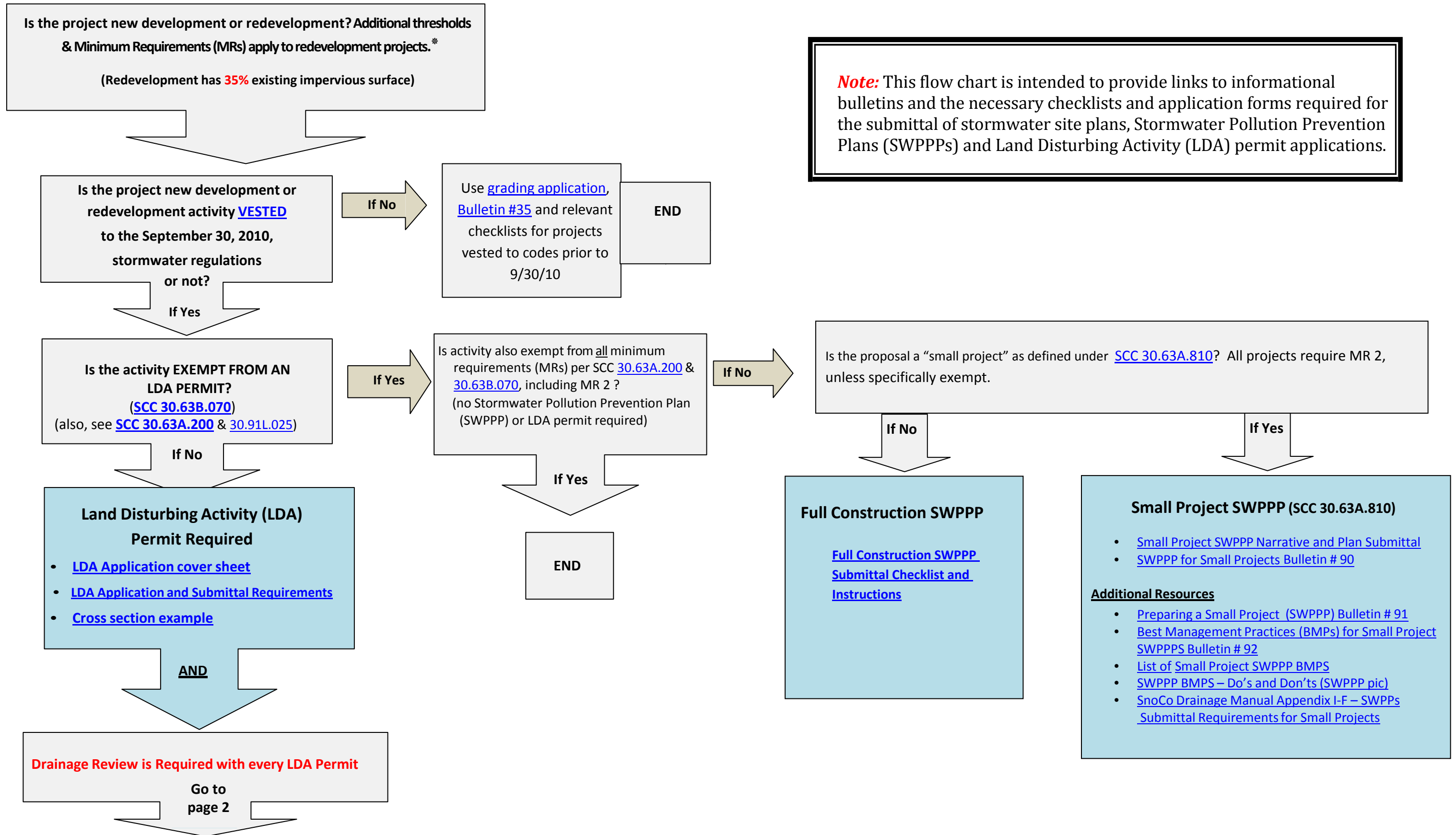




Flow Chart for General Stormwater Management Regulations Compliance with Snohomish County Code (SCC) Chapters 30.63A - Drainage, 30.63B - Land Disturbing Activity (LDA) and 30.63C - Low Impact Development (LID) (effective 9/30/10)



Note: This flow chart is intended to provide links to informational bulletins and the necessary checklists and application forms required for the submittal of stormwater site plans, Stormwater Pollution Prevention Plans (SWPPPs) and Land Disturbing Activity (LDA) permit applications.



Flow Chart for Stormwater Plan Review with an LDA Permit

Compliance with Snohomish County Code (SCC) Chapters 30.63A - Drainage, 30.63B - Land Disturbing Activity (LDA) and 30.63C - Low Impact Development (LID)

What LDA/ Drainage Review Threshold is Met? LDA: clearing (and conversion), grading, new, replaced, or new plus replaced impervious surface

Note: For Redevelopment Projects, See Additional Minimum Drainage Thresholds and Requirements in SCC30.63A.310, For Road Maintenance Projects, See Additional Minimum Requirements (MRs) in SCC 30.63A.700

If project meets these thresholds ([see 30.63A.300\(2\)](#) & [30.63A.310\(2\)](#)) (or is not exempt due to critical areas)

- Results in or adds **2,000 – 4,999** square feet or greater of new, replaced, or new plus replaced impervious surface area;
- OR
- Causes land disturbing activity of **7,000** square feet or greater

If project meets these thresholds: ([see 30.63A.300\(3\)](#) & [30.63A.310\(3\)](#))

- Result in or adds **5,000** square feet or more of new, replaced, or new plus replaced impervious surface area;
- Convert three-quarters of an acre or more of native vegetation to lawn or landscaped areas; or
- Converts **2.5** acres or more of native vegetation to pasture

Targeted Stormwater Site Plan

Compliance with Chapter [30.63A SCC](#) (including Minimum Requirements (MRs) 1-5 in [SCC 30.63A.400 -.525](#))

Full Stormwater Site Plan

Compliance with Chapter [30.63A SCC](#) (including Minimum Requirements (MRs) 1-9 in [SCC 30.63A.400 - 30.63A.605](#))

Targeted Stormwater Site Plan

- [Drainage Review Submittal Checklist and Form](#)
- [Drainage Review Bulletin # 89](#)
- [Targeted Stormwater Site Plan Checklist](#) (Chapter 30.63A SCC including MRs 1-5 (SCC 30.63A.400 - .525))
- [Construction/Full \(SWPPP\) Submittal Checklist and Instructions](#)
- [Bulletin #94 Post Construction Soil Standard](#) with attachments
 - [Compost - Topsoil Calculation Worksheet](#)
 - [Soil Management Plan Summary Form](#)
 - [Notice of Soil Amendment Inspection Procedures](#)

Note!

Drainage Review is required with every LDA permit .

*Additional thresholds & Minimum Requirements apply to redevelopment projects (those with 35% existing impervious surface). [See SCC 30.63A.310\(5\) and \(6\)](#)

Full Stormwater Site Plan

- [Drainage Review Submittal Checklist and Form](#)
- [Full Stormwater Site Plan Submittal Checklist and Instructions](#)
- [Construction/Full \(SWPPP\) Submittal Checklist and Instructions](#)
- [Bulletin #94 Post Construction Soil Standard](#) with attachments
 - [Compost - Topsoil Calculation Worksheet](#)
 - [Soil Management Plan Summary Form](#)
 - [Notice of Soil Amendment Inspection Procedures](#)