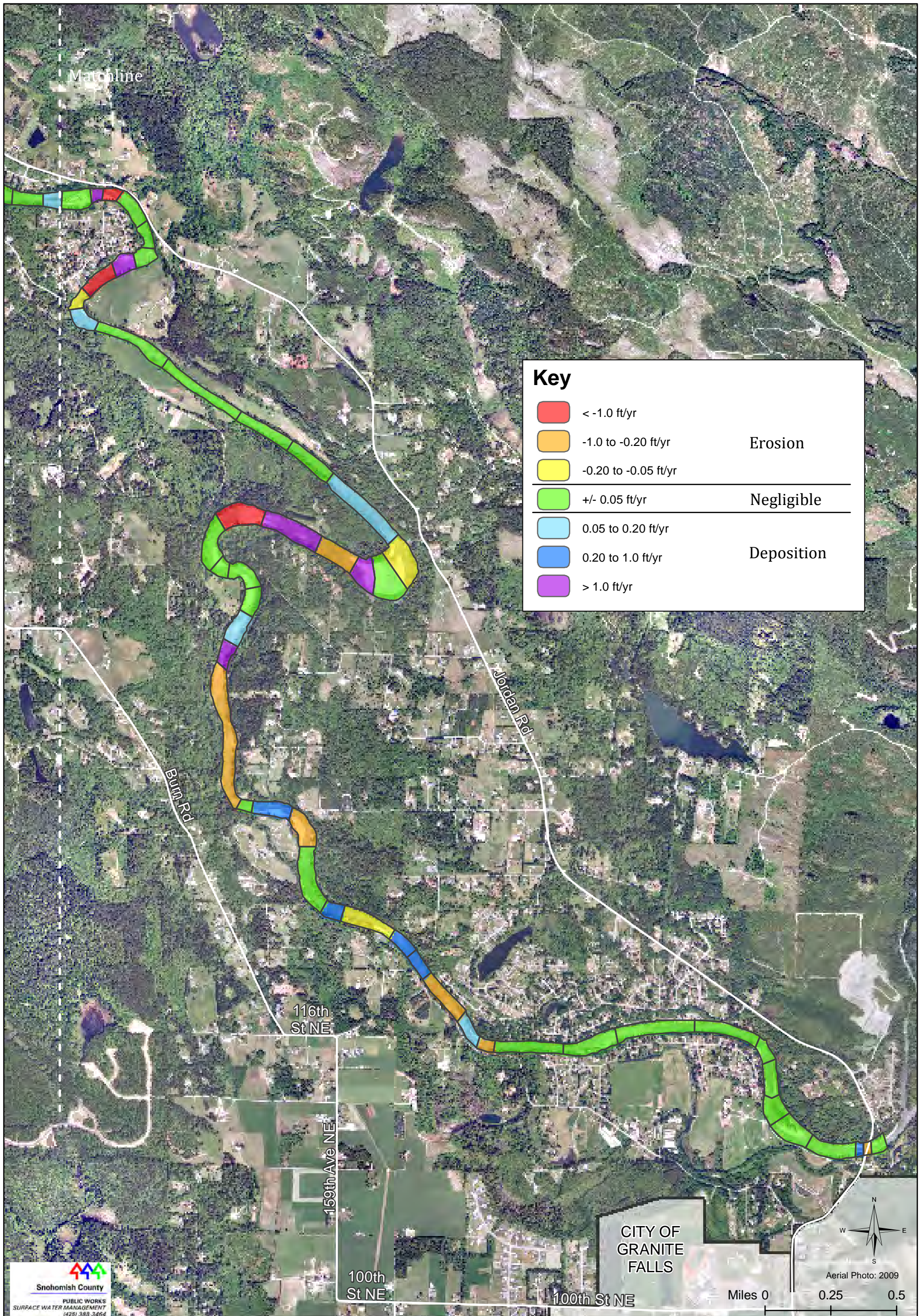


Plate 2: South Fork Stillaguamish Aggradation/Degradation Potential

Spatial variation in erosional and depositional trends in the upper half of the South Fork Stillaguamish River analysis reach as suggested by sediment transport modeling using Parker's (1990) bedload transport equation; classifications are as defined in Table 2. Lateral extent depicted is based on the extent of historic channel delineation.



Snohomish County
PUBLIC WORKS
SURFACE WATER MANAGEMENT
(425) 388-3464

Snohomish County disclaims any warranty of merchantability or warranty of fitness of this map for any particular purpose, either express or implied. No representation or warranty is made concerning the accuracy, currency, completeness or quality of data depicted on this map. Any user of this map assumes all responsibility for use thereof, and further agrees to hold Snohomish County harmless from and against any damage, loss, or liability arising from any use of this map.